



NATIONAL  
QUALITY FORUM

# NQF Measure Selection Tool (MSeT)

# Project Team

- Wunmi Isijola, MPH, Senior Managing Director
- Kate McQueston, MPH, Senior Project Manager
- Jean-Luc Tilly, Senior Manager, Data Analytics
- Madison Jung, Project Manager

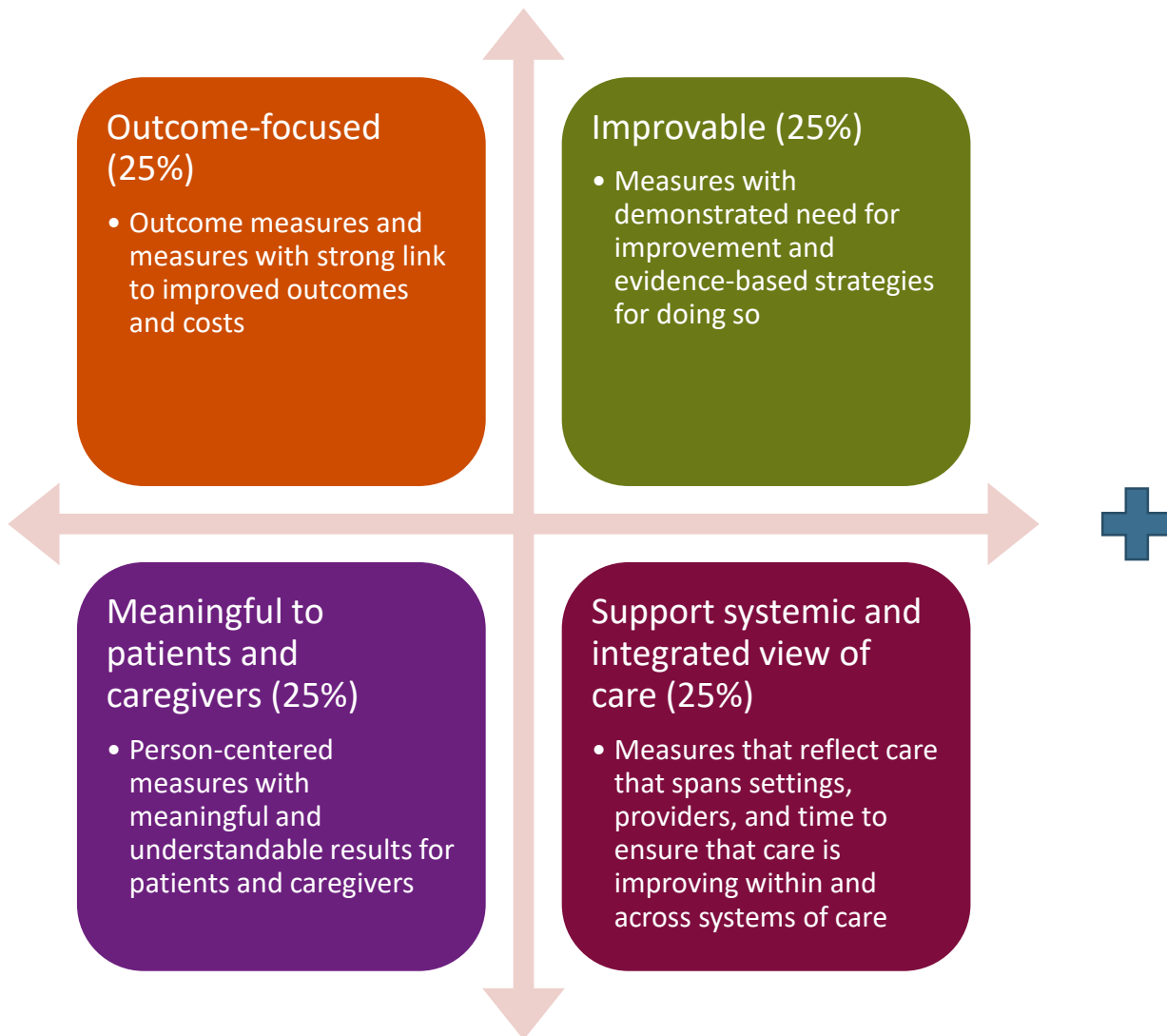
# Background

# Overview

- Phase 1 (2017-2018): Measure Prioritization
  - ▣ *Identified priority measurement areas*
  - ▣ *Feedback on Prioritization Criteria*
  - ▣ *Applied scoring methodology to NQF portfolio*
- Phase 2 (2019-2020): Measure Selection
  - ▣ *Re-focused on Measure Selection*
  - ▣ *Streamlined and expanded Selection Criteria*
  - ▣ *Product Design and User Testing*

# NQF Measure Prioritization Criteria

## Prioritization Phase 1



## Future Phases

### Equity Focused

- Measures that are disparities sensitive

### Impact

- Measures that have large-scale societal effect on healthcare outcomes and/or costs

### Implementation Burden

Measures with less implementation cost, either financial, or in clinician time

# Phase 1: Application of Prioritization Criteria

Measure Number	Measure Title	Outcome Focused	Improvable	Patient and Caregiver Focused	Integrated View of Care	Total Score (0-10)
711	Depression Remission at Six Months	2.5	2.5	2.5	1.25	8.75
1885	Depression Response at Twelve Months- Progress Towards	2.5	2.5	2.5	1.25	8.75
710	Depression Remission at Twelve Months	2.5	2.5	2.5	1.25	8.75
1884	Depression Response at Six Months- Progress Towards	2.5	1.25	2.5	1.25	7.5
2602	Controlling High Blood Pressure for People with Serious	2.5	2.5	1.25	1.25	7.5
2607	Diabetes Care for People with Serious Mental Illness: H	2.5	2.5	1.25	1.25	7.5
2608	Diabetes Care for People with Serious Mental Illness: H	2.5	2.5	1.25	1.25	7.5
2606	Diabetes Care for People with Serious Mental Illness: B	2.5	2.5	1.25	1.25	7.5
712	Depression Utilization of the PHQ-9 Tool	0	2.5	2.5	1.25	6.25
2634	Inpatient Rehabilitation Facility (IRF) Functional Outcom	2.5	1.25	1.25	1.25	6.25
2860	Thirty-day all-cause unplanned readmission following p	2.5	1.25	1.25	0.625	5.625
2888	Risk-Standardized Acute Admission Rates for Patients w	2.5	1.25	1.25	0.625	5.625
2599	Alcohol Screening and Follow-up for People with Seriou	0	2.5	1.25	1.25	5
3132	Preventive Care and Screening: Screening for Depressio	0	2.5	1.25	1.25	5
3148	Preventive Care and Screening: Screening for Clinical De	0	2.5	1.25	1.25	5
2601	Body Mass Index Screening and Follow-Up for People w	0	2.5	1.25	1.25	5
1934	Diabetes Monitoring for People With Diabetes and Schi	0	1.875	1.25	0.625	3.75
2603	Diabetes Care for People with Serious Mental Illness: H	0	2.5	0	0.625	3.125
2609	Diabetes Care for People with Serious Mental Illness: E	0	2.5	0	0.625	3.125
2604	Diabetes Care for People with Serious Mental Illness: M	0	2.5	0	0.625	3.125
105	Antidepressant Medication Management (AMM)	0	1.25	1.25	0	2.5
2806	Pediatric Psychosis: Screening for Drugs of Abuse in the	0	1.25	0	0.625	1.875

# Feedback on Prioritization Phase 1

- Standing Committee Feedback (142 responses)
  - ▣ *Percent of respondents who agree with the scoring results*
    - » 61% of respondents agree or strongly agree
    - » 19% are neutral
    - » 20% disagree or strongly disagree
  - ▣ *Refine outcome-focused and meaningful to patient and caregivers*
- CSAC Feedback
  - ▣ *Account for impact*
  - ▣ *Clarify intended audience*
  - ▣ *Provide more guidance on how to distinguish between topically-similar measures that receive similar scores (i.e.. Depression remission at 6 months vs 12 months)*
  - ▣ *Account for ease of implementation*
  - ▣ *Refine meaningful to patient and caregivers*

# Summary of Phase 1

- **Outcome:**

- ▣ *Strong support to develop guidance for prioritizing NQF's measures*
- ▣ *Strong pushback on the use of the scoring and the methodology.*

- **Conclusion:**

- ▣ *No consensus on the scoring methodology*
- ▣ *Resource constraints prohibit fully addressing stakeholder concerns in the near term*



# Phase 2 – Measure Selection Tool (MSeT)

# NQF Preferred Measure Selection Tool (MSeT)

## **Problem:**

Overwhelming number of possible measures to select

- *NQF has 500+ endorsed measures – of these measures, how can I decide which ones I should be using?*



**Goal:** Narrow the universe of appropriate measure selections, based on individual user preferences and needs

# Measure Selection Attributes: “Meets” or “Does Not Meet”

Attribute	Question
Outcome-focused	Does the measure reflect a change in clinical status?
High Opportunity for Improvement	Does the measure have a significant variation in performance?
Patient- and caregiver-focused	Is the measure result meaningful to patients and their caregivers?
Support Integrated View of Care	Does the measure reflect a collaborative and coordinated health system?
Impact/Prevalence*	Does the measure address one or more pervasive and harmful conditions?
Data Collection Burden*	Does the measure have minimum impact on clinical workflow and limited upfront investment?
Health Equity**	Does the measure address ongoing healthcare disparities?

\* New in MSeT

\*\* Pause implementation

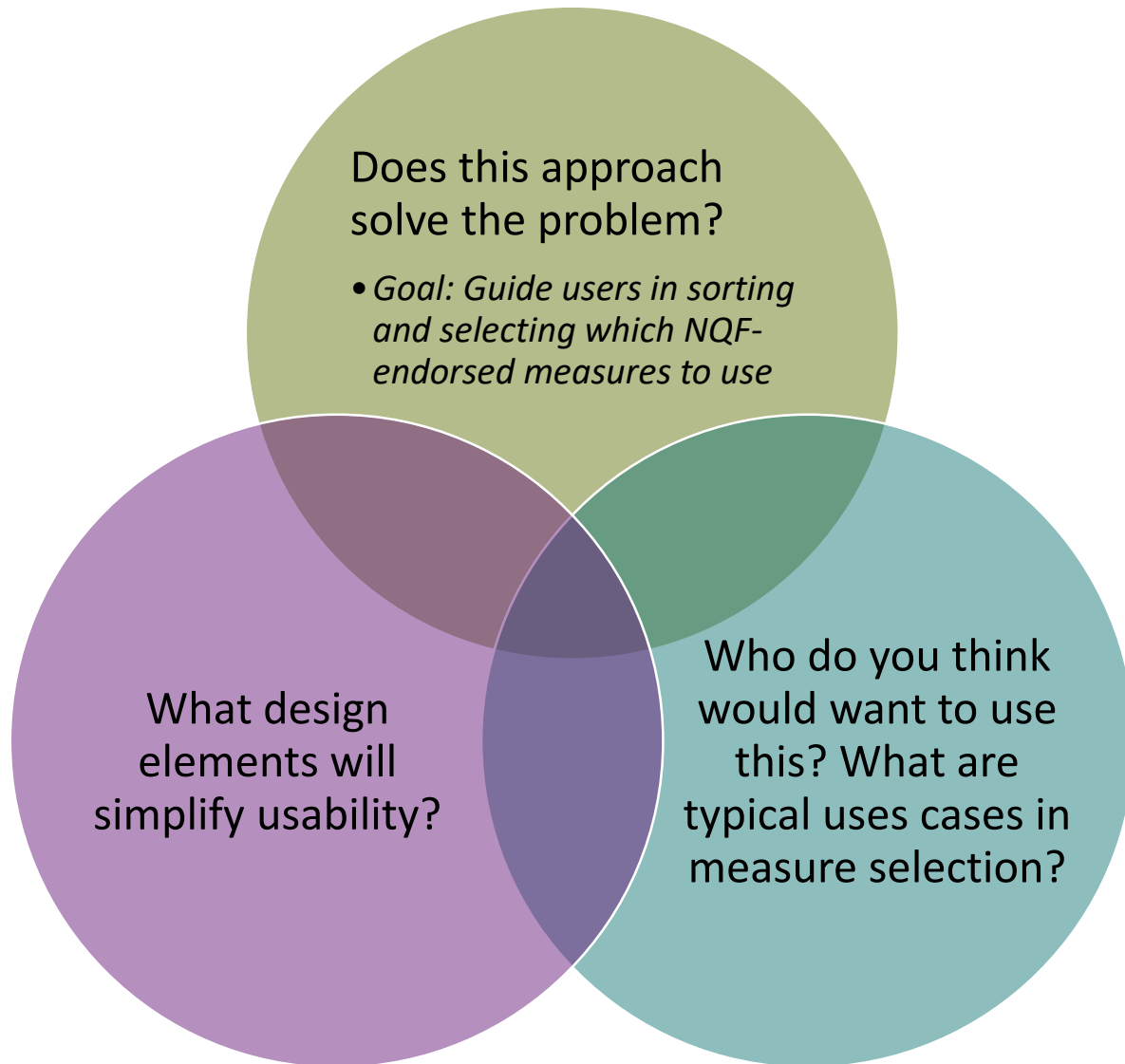
# Implementation Approach

*Develop binary  
“meets/does not  
meet” ruleset for  
each attribute*

*Assign attributes to  
NQF-endorsed  
measures*

*Make these tags  
available to external  
users*

# Overall Considerations



# Next Steps

- Develop “Use Cases” of likely user stories
- Finalize rules for attribute assignments
  - ▣ *Test on select topic area portfolios*
  - ▣ *Assign attributes to all NQF-endorsed measures*
- Design tool and test with focus groups
- Deploy in Spring 2020, possibly in conjunction with other NQF measure database updates

# Discussion

- What are some examples of use cases for a measure selection tool? Who are these users affiliated with, and what are their priorities?
- What other information could help a user choose between measures? How might that information be displayed (one-to-one comparison of specifications? Highlights of key distinguishing features?)