



**NATIONAL  
QUALITY FORUM**

Driving measurable health  
improvements together

<http://www.qualityforum.org>

# All-Cause Admissions & Readmissions, Fall 2019 Measure Review Cycle

## Post-Comment Standing Committee Meeting

Matthew Pickering, PharmD, Senior Director

Poonam Bal, MSHA, Director

Oroma Igwe, MPH, Project Manager

Funmilayo Idaomi, Project Analyst

Taroon Amin, PhD, MPH, Consultant

*June 22, 2020*

# Welcome

## Welcome

- The CenturyLink web platform will allow you to visually follow the presentation
- Please mute your lines when you are not speaking to minimize background noise.
- Please do not put the call on hold.
- You may submit questions to project staff via the CenturyLink web platform chat function.
- You may raise your hand using the CenturyLink web platform.

If you are experiencing technical issues, please contact the NQF project team at [readmissions@qualityforum.org](mailto:readmissions@qualityforum.org)

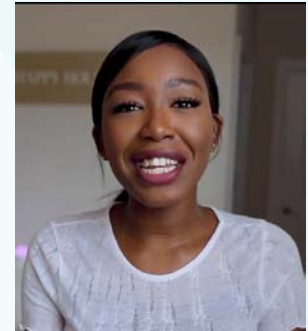
## Project Team All-Cause Admissions and Readmissions Committee



**Matthew Pickering,**  
PharmD,  
**Senior  
Director**



**Oroma Igwe, MPH,**  
**Project Manager**



**Funmilayo Idaomi,**  
**Project Analyst**



**Poonam Bal,**  
MSHA, **Director**



**Taroon Amin, PhD,**  
MPH **Consultant**



## Agenda

- Attendance
- Review and Discuss Public Comments
- NQF Member and Public Comment
- Next Steps
- Adjourn

# Attendance

## All-Cause Admissions & Readmissions Spring 2020 Cycle Standing Committee

- John Bulger, DO, MBA (co-chair)
- Cristie Travis, MSHA (co-chair)
- Frank Briggs, PharmD, MPH
- Mae Centeno, DNP, RN, CCRN, CCNS, ACNS-BC
- Helen Chen, MD
- Edward Davidson, PhD, MPH, FASCP
- Richard James Dom Dera, MD, FAAFP
- Paula Minton Foltz, RN, MSN
- Brian Foy, MHA
- Lisa Freeman
- Faith Green, MSN, RN, CPHQ, CPC-A
- Leslie Kelly Hall
- Michelle Lin, MD, MPH, MS
- Kenneth McConnochie, MD, MPH
- Dheeraj Mahajan, MD, CIC, CMD
- Zeyno Nixon, PhD, MPH
- Amy O'Linn, DO, FHM, FACP
- Gaither Pennington, RN, BSN
- Carole Pulaski, MSA, BSN, CPHQ
- Pamela Roberts, PhD, MSHA, ORT/L, SCFES, FAOTA, CPHQ, FNAP, FACRM
- Sheila Roman, MD, MPH
- Teri Sholder, RN, BSN, MHA, CPHQ, CPC
- Chloe Slocum, MD, MPH
- Anthony White

# **Review and Discuss Public Comments**





## 3495 Hospital-Wide 30-Day, All-Cause, Unplanned Readmission (HWR) Rate – Clinician Group/Practice Level of Analysis

- **Measure Developer/Steward:** Yale New Haven Health Services Corporation Center for Outcomes Research and Evaluation/CMS
  - ▣ Maintenance/new measure
- **Brief Description of Measure:**
  - ▣ This measure is a re-specified version of the hospital-level measure, “Hospital-Wide All-Cause, Unplanned Readmission Measure” (NQF #1789).
  - ▣ NQF #3495 attributes hospital-wide index admissions to up to three participating MIPS Eligible Clinician Groups (“providers”). It assesses each provider’s rate of 30-day readmission, which is defined as unplanned, all-cause readmission within 30 days of hospital discharge for any eligible condition.
  - ▣ The measure reports a single summary risk adjusted readmission rate (RARR), derived from the volume-weighted results of five different models, one for each of the following specialty cohorts based on groups of discharge condition categories or procedure categories: surgery/gynecology; general medicine; cardiorespiratory; cardiovascular; and neurology, each of which will be described in greater detail below.



## **3495 Hospital-Wide 30-Day, All-Cause, Unplanned Readmission (HWR) Rate – Clinician Group/Practice Level of Analysis**

- **Summary of Comments Received: [8]**
  - ▣ Reliability at minimum case volumes
  - ▣ Evidence to support attribution
  - ▣ Risk adjustment testing and social risk factors

# **NQF Member and Public Comment**

# Next Steps



NATIONAL  
QUALITY FORUM

# Activities and Timeline – Fall 2019 Cycle

**\*All times ET**

Meeting	Date, Time*
CSAC Review	November 17 – 18, 2020
Appeals Period (30 days)	November 23 – December 23, 2020



## Project Contact Info

- Email: [readmissions@qualityforum.org](mailto:readmissions@qualityforum.org)
- NQF phone: 202-783-1300
- Project page:  
[http://www.qualityforum.org/All Cause Admissions and Readmissions.aspx](http://www.qualityforum.org/All_Cause_Admissions_and_Readmissions.aspx)
- SharePoint site: [http://share.qualityforum.org/Projects/admissions\\_readmissions/SitePages/Home.aspx](http://share.qualityforum.org/Projects/admissions_readmissions/SitePages/Home.aspx)

# Questions?

**THANK YOU.**

**NATIONAL QUALITY FORUM**

<http://www.qualityforum.org>