



NATIONAL  
QUALITY FORUM

# Health and Well-Being Standing Committee Off-Cycle Web Meeting

*September 7, 2017  
2-3:30 PM EST*

# WELCOME

TO NATIONAL QUALITY FORUM

Over 425 Members Strong

# Objectives

- Discuss the purpose of off-cycle activities at NQF
- Discuss the purpose and structure of measurement frameworks
- Discuss NQF's partnership with the Urban Institute to develop a framework for Food Insecurity and Housing Instability

# Standing Committee

- **Thomas McInerney, MD (*co-chair*)**
- **Amir Qaseem, MD, PhD, MHA (*co-chair*)**
- John Auerbach, MBA
- Michael Baer, MD
- Ron Bialek, MPP, CQIA
- Juan Emilio Carrillo, MD, MPH
- Anne De Biasi, MHA
- Barry-Lewis Harris, II, MD
- Catherine Hill, DNP, APRN
- Ronald Inge, DDS
- Patricia McKane, DVM MPH
- Amy Minnich, RN, MHSA
- Jacqueline Moline, MD, MSc
- Marcel Salive, MD, MPH
- Katie Sellers, DrPH, CPH
- Jason Spangler, MD, MPH, FACPM
- Matt Stiefel, MPA, MS
- Michael Stoto, PhD
- Steven Teutsch, MD, MPH
- Arjun Venkatesh, MD, MBA

# *Off-Cycle Activities*

# Off-Cycle Activities

- What is considered “off-cycle”?
  - During the periods in which no measures are being reviewed, or the “off cycle”, these are Standing Committee activities that may occur outside a funded project’s scope.
  - In order to enable ongoing engagement of committee members throughout their two (or three) year terms, NQF will host quarterly, two-hour web meetings or conference calls for each Standing Committee during the off cycle timeframe.

# Off-Cycle Activities

## Potential Activities:

- Ongoing updates on NQF policy/process
- Addressing and setting measurement priorities for topic area
- Reviewing current measurement landscape
- Follow-up from the Consensus Development Process
  - Deferred decisions
  - Directives from CSAC or Board of Directors
  - Related and competing measures/harmonization
- Ad hoc reviews
- Topic area consultation to other Committees
- Collaborative opportunities with developers, specialty societies, and implementers



# What is a “Framework” Project at NQF?





# What is a “Framework” Project at NQF?

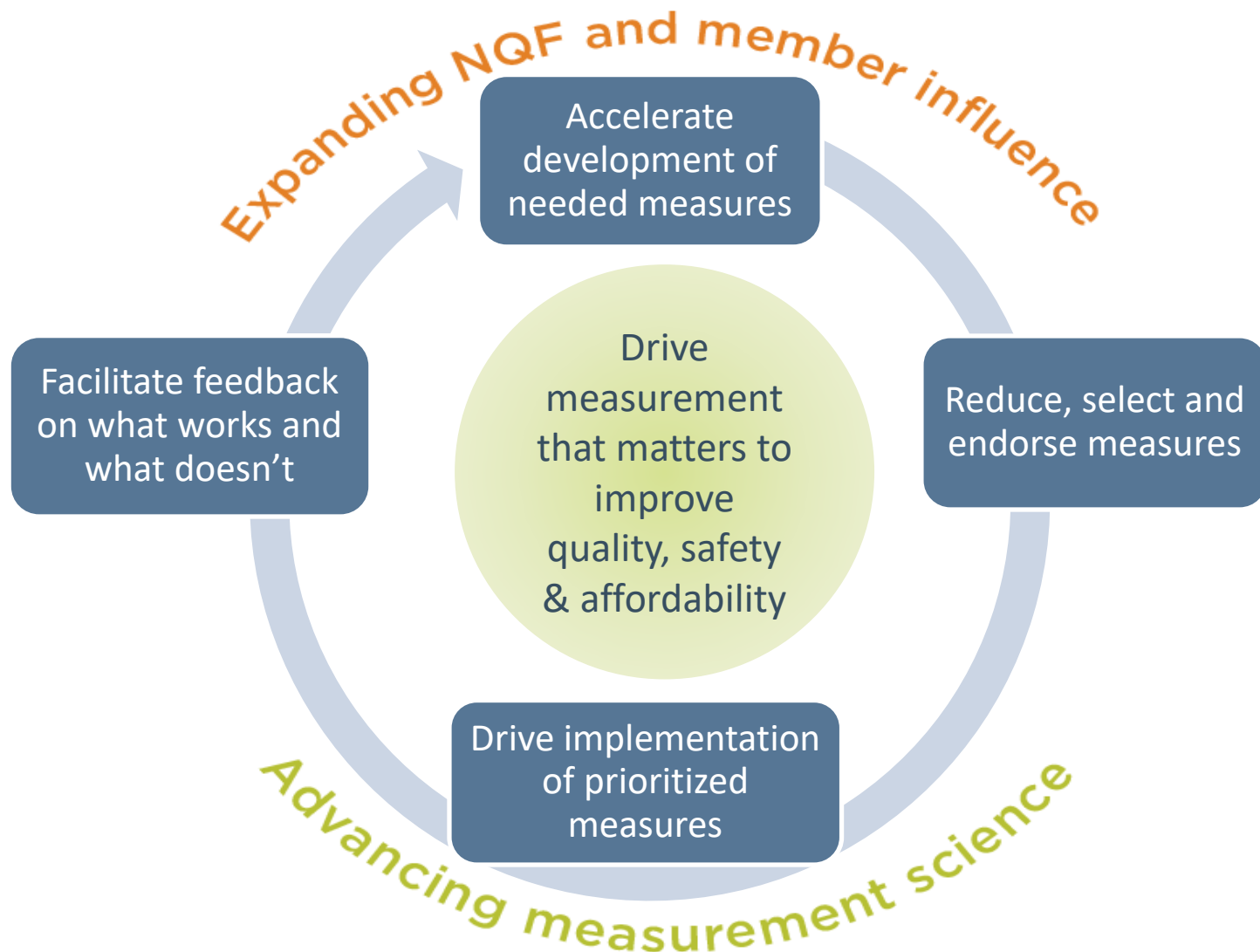
- Non-Endorsement and non-MAP work
- Funded by both public and private sector
- Could be a project to understand a particular idea or topic as it relates to quality measurement or to explore various measurement science issues
  - *E.g., Attribution, Variation in Measure Specifications*
- Could be a project to build a framework to inform measurement and measure development
  - *E.g., Addressing measure gaps, Telehealth*



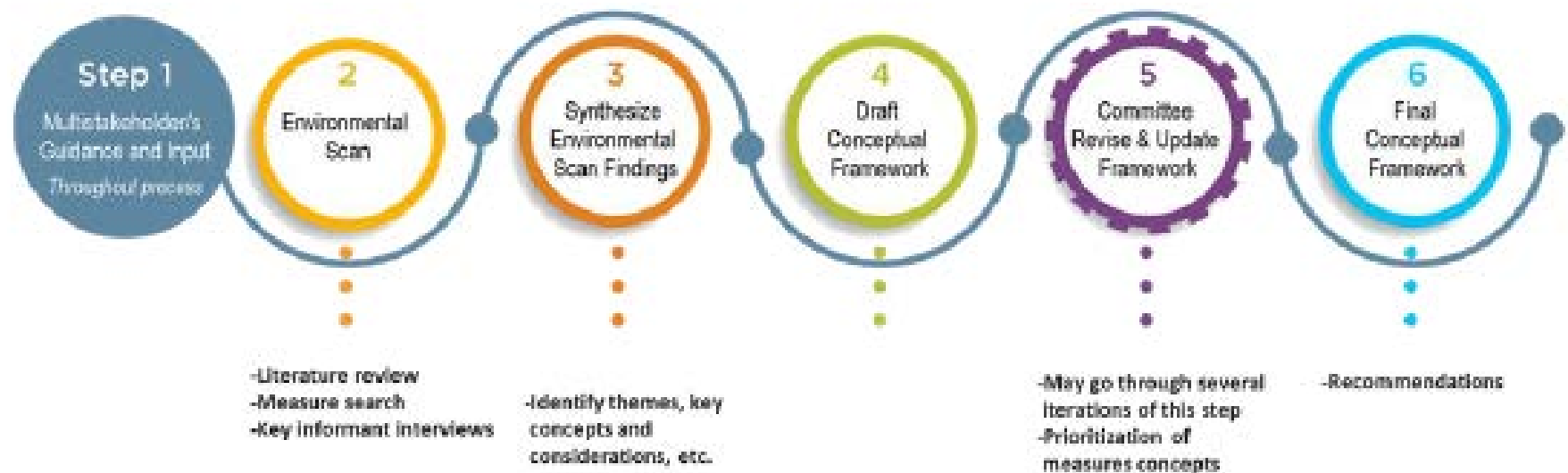
# What are some of the key differences between a framework project and other projects you encounter at NQF?

- No measure evaluation
- No measure selection for federal use
- Variation in timeframes and deliverables
- More in-depth lit review or environmental scan
- Informal voting as consensus building tool

# NQF: Lead. Prioritize. Collaborate.



# NQF Framework Development Process





# What is the structure of a Measurement Framework?



# What is a Measurement Framework?

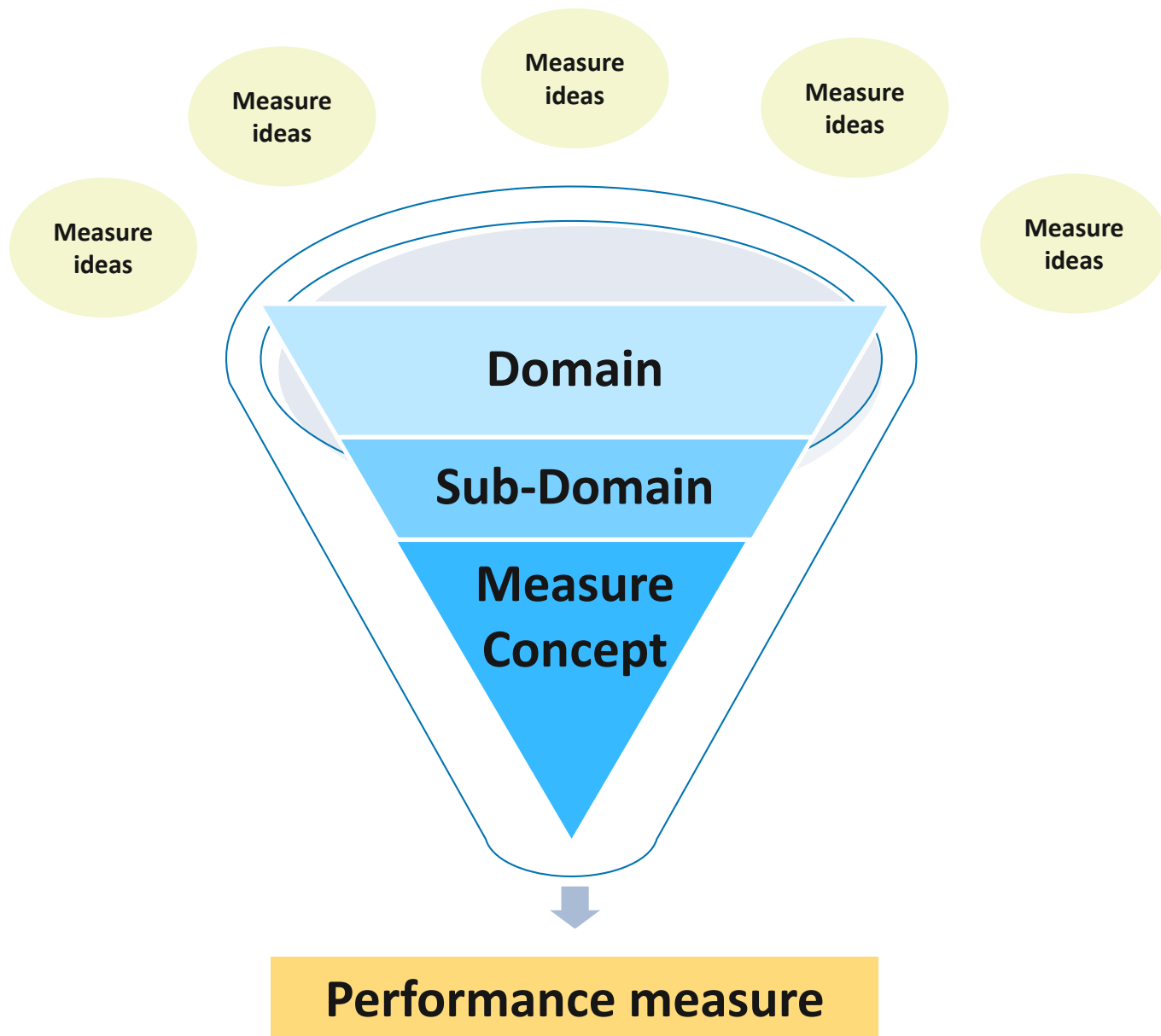
- A **measurement framework** is a conceptual model for organizing ideas about what is important to measure in a topic area.
- Measurement frameworks are made up of:
  - *Domains of measurement*
  - *Subdomains of measurement*
  - *Measure Concepts*

*Measurement frameworks provide a structure for organizing currently available measures, identifying measure gaps, and prioritizing measures for future development*



# Considerations

- What is the desired outcome for the individual?
- Is there an accountable entity that has the ability to influence what should be measured?
- Is there variability among providers and opportunity for improvement?
- What is feasible to measure in the short, medium, and long-term?







# Elements of a Measurement Framework

Measurement Framework

**Domain:** a categorization/grouping of high-level ideas that further describes the measurement framework



**Subdomain:** a smaller categorization/grouping within a domain



**Measure concept:** a description of a potential an assessment tool, that includes planned target and population



**Performance Measure:** an assessment tool that specifies a numerator (what/how/when), denominator (who/where/when), and exclusions (not) and may have undergone scientific testing

# HCBS Example

## Measurement Framework

**Personal-Centered Planning and Coordination (domain):** an approach to assessment, planning, and coordination of services and supports that is focused on the individual's goals, needs, preferences, and values.



**Assessment (subdomain):** The level to which the Home and Community-Based Services (HCBS) system and providers support the person in identifying their goals, needs, preferences, and values. This process should gather all of the information needed to inform the person centered planning process. Re-assessments should occur on a regular basis to assure that changes in consumer goals and needs are captured and appropriate adjustments to services and supports are made.

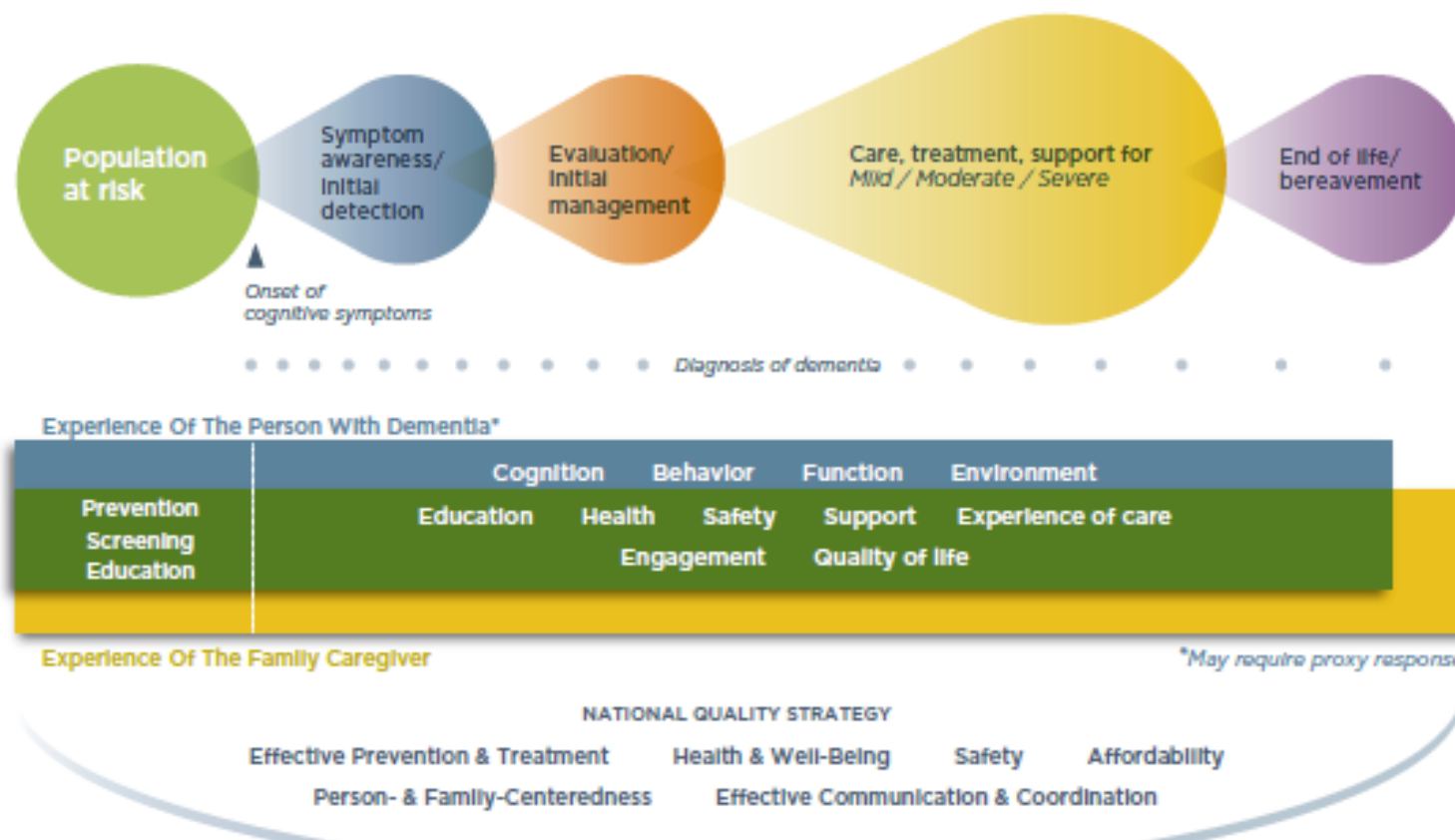


**Measure concept:** Percent responding yes to: Do you believe that the result of your "level of care assessment" identifies your real needs? (NMPQR: New Mexico CoLTS (1915c) Waiver Participant Quality Review.)



**Performance Measure:** an assessment tool that specifies a numerator (what/how/when), denominator (who/where/when), and exclusions (not) and may have undergone scientific testing

# CONCEPTUAL MODEL FOR PERFORMANCE MEASURE DEVELOPMENT FOR DEMENTIA: Maximizing quality of life, minimizing distress



# A Measurement Framework for Food Insecurity and Housing Instability

# What we know...

- Social determinants of health are critical factors that influence the health outcomes of individuals
- Economic stability, in particular, has a profound impact on health and health care outcomes because it includes some of the most basic needs
- Approximately 12.7 percent of US households were food insecure in 2015
  - *Nearly 3 million of food insecure households had children under the age of 6*
- Housing instability and food insecurity are linked
- Over 500,000 (1 in 5 being children) experience homelessness on any given night in 2016
  - *Independently associated with lack of usual source of care, postponing needed medical treatment, and hospitalizations*

# Objectives

- Urban Institute is partnering with NQF to develop a measurement framework that allows for the systematic assessment of food insecurity and housing instability
- The measurement framework will provide a structure for organizing available measures, areas where gaps in measurement exist, and prioritization for future measure development.
- To support this effort NQF will:
  - *Convene an expert panel with expertise in measurement, disparities, food insecurity, and housing instability*
  - *Conduct an environmental scan of performance measures and literature review to construct a straw man framework (using existing conceptual frameworks)*
  - *Identify gaps in measurement*
  - *Propose measure concepts that can be translated into performance measures*



# Food and Housing Insecurity Expert Panel

- **Ron Bialeck, MPP, CQIA**
  - *President, Public Health Foundation*
- **Traci Ferguson, MD MBA, CPE**
  - *Vice President, Clinical Services Management, WellCare Health Plans, Inc.*
- **Rebecca Freeman, PhD, RN, PMP**
  - *Chief Nursing Office of the National Coordinator for Health Information Technology (ONC)*
- **Nancy Garrett, PhD**
  - *Chief Analytics Officer, Hennepin County Medical Center*
- **Laura Gottlieb, MD, MPH**
  - *UCSF Associate Professor of Family and Community Medicine, Director*
- **Romana Hasnain-Wynia, PhD, MS**
  - *Chief Research Officer, Denver Health*
- **Nancy Lawton-Kluck**
  - *Chief Philanthropy Officer, Geisinger Health System*
- **Lynn Knox**
  - *Statewide Health Care Liaison, Oregon Food Bank*
- **Amanda Reddy, MS**
  - *Executive Director, National Center for Healthy Housing*
- **Sarah Hudson Scholle, DrPH, MPH**
  - *Vice President, Research and Analysis, National Committee for Quality Assurance*
- **Prabhjot Singh, MD, PhD**
  - *Director of Arnhold Institute for Health, Chair of Department of Health System Design and Global Health at Mount Sinai Health System*
- **Clare Tanner, PhD, MS**
  - *Program Director, Center for Data Management and Translation Research at Michigan Public Health Institute*

# Project Next Steps

## *Activities and Timeline*

| Milestone/Meeting   | Due Date                       |
|---|--------------------------------|
| Expert Panel Orientation  | Week of September 18           |
| Memo Summarizing Environmental Scan Findings                                      | October 15, 2017               |
| Expert Panel In-Person Meeting  | October 18, 2017               |
| Opportunity for Public Comment on Draft Report                                    | November 3 – November 17, 2017 |
| Expert Panel Post-Comment Webinar   | Week of November 27            |
| Consensus Standards Approval Committee  | December 12, 2017              |
| Final Report: A Measurement Framework for Food Insecurity and Housing Instability | December 15, 2017              |



# ***Committee Discussion***

# Discussion Questions

- What are the key considerations for prioritizing measures (to be developed) for food and housing insecurity?
- Which existing frameworks or conceptual models should we consider to inform the development of the measurement framework?
- What are the most common tools to measure food and housing insecurity?
- What areas are most important to measure (i.e. highest impact on reducing food and housing insecurity)?

# Discussion Questions

- What are the best resources for identifying tools and measures?
- What are the challenges to measuring food and housing insecurity?
- Is there enough overlap between measurement for food and housing insecurity to create a single framework?

# *Opportunity for Public Comment*

*Adjourn*