

## Welcome and Housekeeping Reminders

- Please mute your audio when not speaking
- Please ensure your name is displayed correctly (right click on your picture and select "Rename" to edit)
- Please turn on video, especially during discussions
- To switch your display, right click "View" in the upper-right hand corner and select "Speaker" or "Gallery"
- Please use the 'Raise Hand' if you wish to speak (click 'Participants' icon, then click 'Raise Hand' at the bottom of the participant list)
- Please use the chat feature to communicate with NQF staff
- If you are experiencing technical issues, please contact us at [EHRCareCoordination@qualityforum.org](mailto:EHRCareCoordination@qualityforum.org)



**NATIONAL  
QUALITY FORUM**

Driving measurable health  
improvements together

<https://www.qualityforum.org>

# Leveraging Electronic Health Record (EHR) - Sourced Measures to Improve Care Communication and Coordination Option Year

## Web Meeting 3

February 8, 2022

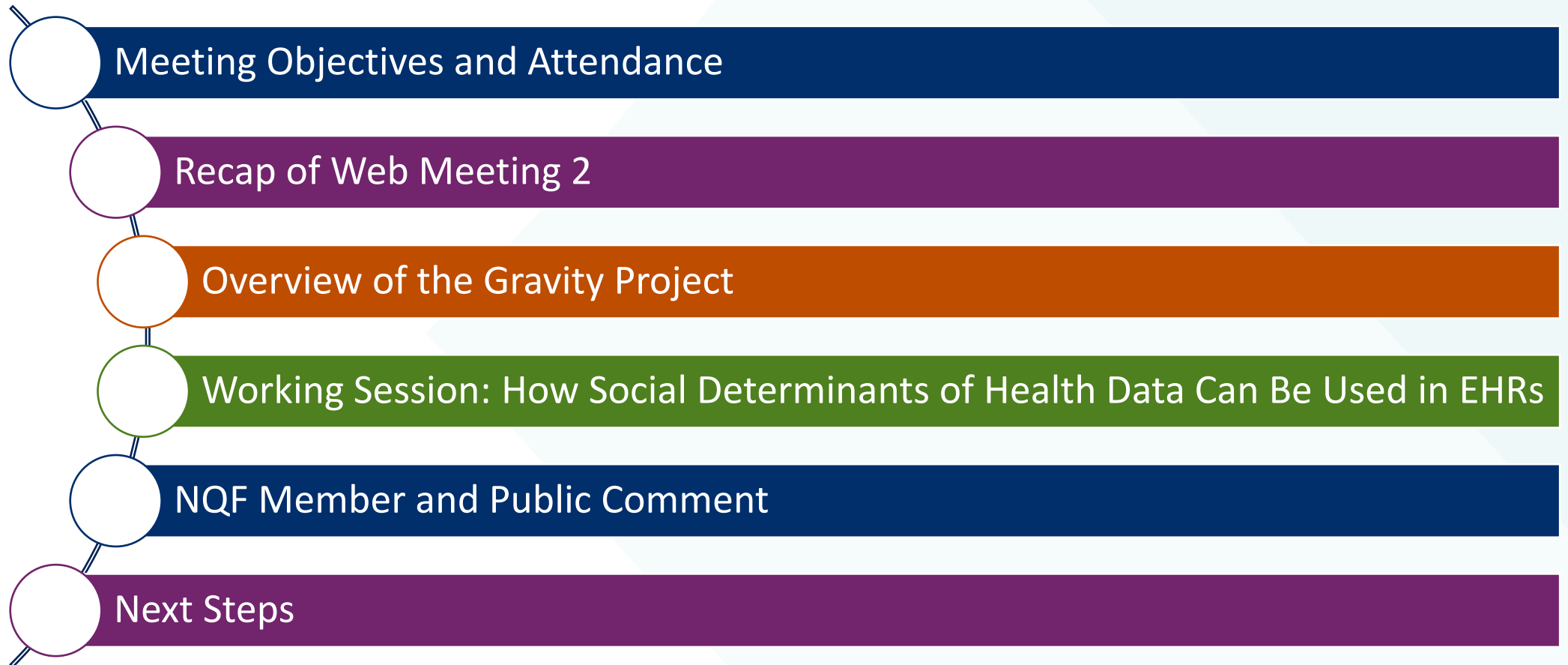
*This project is funded by the Centers for Medicare & Medicaid Services under contract HHSM-500-2017-00060I –75FCMC20F0004– Leveraging EHR Sourced Measures to Improve Care Communication and Coordination*

# Welcoming Remarks

Richard Antonelli, EHR Care Coordination Committee Co-chair

Gerri Lamb, EHR Care Coordination Committee Co-chair

# Agenda



# Meeting Objectives and Attendance

Chelsea Lynch, Director, NQF

Victoria Freire, Analyst, NQF

## Project Timeline



\*WM = Web Meeting

## Meeting Objectives

- Review and assess social determinants of health (SDOH) domains within the Gravity Project
- Discuss the impact of SDOH data on EHR-based care communication and care coordination
- Develop recommendations for how SDOH data can be used for care communication and care coordination quality measurement

## Roster

- **Richard Antonelli, MD, MS (Co-Chair)**
- **Gerri Lamb, PhD, RN, FAAN (Co-Chair)**
- Kathleen Balestracci, PhD, MSW
- David Burianek
- Brian Buys, RN, MBA
- Sherri Costa, MS, RN, AOCNS
- Cynthia Cullen, MS, MBA, PMP
- Keith Horvath, MD
- David Key
- Joseph Kunisch, PhD, RN-BC, CPHQ
- Russell Leftwich, MD
- Michael Lieberman, MD, MS
- Brent Peery, DMin
- Rebecca Perez, MSN, RN, CCM
- Ann Polich, MD, MPH, MBA
- Walter Rosenberg, MSW, MHSM, LCSW
- Stacie Schilling, MPH
- Suellen Shea, MSN, RN, LSSGB, CPHQ, CPPS
- Colleen Skau, PhD
- Alexis Snyder
- Maurine Stuart
- Jason Wiesner, MD, MBA
- Dorothy Winingham
- Kim Yu, MD, FAAFP
- Andrew Zinkel, MD, MBA



## Federal Liaisons

- **Joel Andress, PhD**, Centers for Medicare & Medicaid Services
- **Tiffany Gillis Brown, JD**, Health Resources and Services Administration
- **Kyle Cobb, MS**, Office of the National Coordinator for Health Information Technology
- **Chris Dymek, EdD**, Agency for Healthcare Research and Quality
- **Tara McMullen, PhD, MPH**, Department of Veterans Affairs
- **Carly Medosch, MBA, PMP**, Centers for Medicare & Medicaid Services
- **Francine Sandrow, MD, MSSM, FAMIA**, Department of Veterans Affairs
- **Kenneth P. Yale, DDS, JD**, Department of Defense

## NQF Project Staff

- **Chelsea Lynch**, MPH, MSN, RN, CIC, Director, Emerging Initiatives
- **Udara Perera**, DrPHc, MPH, Senior Manager, Emerging Initiatives
- **Monika Harvey**, MBA, PMP, Project Manager, Program Operations
- **Victoria Freire**, MPH, CHES, Analyst, Measurement Science & Application
- **Debbie Olawuyi**, MPH, Analyst, Emerging Initiatives
- **Jesse Pines**, MD, MBA, NQF Consultant
- **Maha Taylor**, MHA, PMP, Managing Director, Emerging Initiatives

### *Additional Support:*

- **Chuck Amos**, MBA, Senior Director, Emerging Initiatives
- **Carol Sieck**, PhD, RN, Director, Emerging Initiatives
- **Maura Walsh**, Manager, Program Operations

## CMS Staff

- **Kimberly Rawlings**, TO COR, CCSQ, CMS
- **Gequincia Polk**, IDIQ COR, Interim TO COR, CCSQ, CMS

## Ground Rules

No rank in the room

Participate

Share your experiences

Be respectful

Refrain from political  
comments

Learn from others

# Recap of Web Meeting 2

Chelsea Lynch

## Web Meeting 2 Overview

- Provided context on the approach for interoperability and related EHR attributes
- Reviewed and provided an overview on select background resources
- Refined and finalized recommendations for how EHRs could better facilitate care communication and care coordination

## Dependencies of EHR Attributes

Interoperable Data in EHRs (Stages: Early, Intermediate, or Advanced)

EHR Functionality for Care Communication and Care Coordination

EHR Usability by Stakeholders to Facilitate Care Communication  
and Care Coordination

Effective EHR-Based Care Communication and Care Coordination

## Web Meeting 2 Discussion Recap

- Held working session on how to effectively facilitate care communication and care coordination with EHRs using the following themes:
  - ▣ Collect and Share Data
  - ▣ Optimize Usability for Clinicians and Patients
  - ▣ Document Performance of Care Communication and Care Coordination Activities
  - ▣ Assess the Quality and Performance of Care Communication and Care Coordination Activities
- Discussed missing EHR capabilities from recommendations, including timeliness of information shared, barriers related to motivations for health systems to share data, ability to track patient care between facilities, inclusion of shared decision making when care planning, and inclusion of the patient voice across recommendations
- Refined recommendations



## Updated Themes

Collect and Share Data

Optimize Usability for  
Clinicians

Optimize Usability for  
Patients

Document  
Performance of Care  
Communication and  
Care Coordination  
Activities

Assess the Quality and  
Performance of Care  
Communication and  
Care Coordination  
Activities

# Overview of the Gravity Project

Chelsea Lynch

## Gravity Project

- HL7 FHIR Accelerator project that addresses the needs for both semantic and structural level interoperability of electronic SDOH data
- Launched as a multistakeholder public collaborative with the goal to develop, test, and validate standardized SDOH data documented within EHRs using identified coded data elements
- For each social risk domain, terminology workstreams will create consensus-based representative data sets across four clinical activities:
  - ▣ Screening
  - ▣ Diagnosis
  - ▣ Goal Setting
  - ▣ Interventions
- The status of domain specific codes for each activity is tracked and domains are at different levels of completion (e.g., food insecurity has comprehensive lists of codes for all four activities while housing instability only has select codes present for screening)

## Health Level Seven (HL7) Fast Healthcare Interoperability Resources (FHIR)

- A set of international standards used to provide guidance with transferring and sharing data between multiple healthcare providers
- Representational state application programming interfaces (API) with Resources (discrete data concepts) and Profiles (use cases that tell the relationship and provide meaning to the Resources)
- Adoption of these standards supports clinical practice and the management, delivery, and evaluation of health services
- Office of the National Coordinator for Health Information Technology (ONC) and CMS have rules that require implementation of FHIR-based APIs to support the sharing of health information

## Gravity Project Process and Implementation

- Common data elements and associated value sets about different domains within SDOH are identified
- Recommendations are developed about how to best capture and group these data elements for interoperable electronic exchange and aggregation
- Collaboration occurs with coding and terminology suppliers to address any identified coding gaps
- Codes for SDOH data sets developed and tested for use in FHIR followed by the development of an HL7 FHIR Implementation Guide

Source: <https://www.hl7.org/gravity/>

## Gravity Project Domains

Food  
Insecurity

Transportation  
Insecurity

Elder Abuse

Food Deserts

Financial  
Insecurity

Interpersonal  
Violence (IPV)

Housing  
Instability

Material  
Hardship

Environment

## Gravity Project Domains (cont.)

Inadequate  
Housing

Homelessness

Unemployment

Neighborhood  
Safety

Veteran Status

Education

Social Isolation

Racism

Stress

**Comments or Questions?**



# Working Session: How Social Determinants of Health Data Can Be Used in EHRs

Chelsea Lynch

Chuck Amos, Senior Director, NQF

Richard Antonelli

Gerri Lamb

# Working Session: Purpose and Approach

## Working Session: Purpose and Approach

- The working session will allow for more in-depth discussion on recommendations related to how SDOH data can be used for care communication and care coordination quality measurement
- Each Committee member will be assigned to a breakout group via the Zoom platform
- Committee members will have 60 minutes to brainstorm and discuss the Gravity Project domains to develop recommendations for how EHRs can effectively use SDOH data
- Each breakout group will provide a **brief** report out at the end of the working session
- Each breakout group will be joined by NQF project staff to help facilitate the discussion and troubleshoot any technical issues

## Working Session Group Assignments

### Breakout Room 1

Gerri Lamb, PhD, RN, FAAN  
David Buriank  
Sherri Costa, MS, RN, AOCNS  
Cynthia Cullen, MS, MBA, PMP  
Keith Horvath, MD  
Russell Leftwich, MD  
Rebecca Perez, MSN, RN, CCM  
Suellen Shea, MSN  
Maurine Stuart  
Jason Wiesner, MD, MBA  
Dorothy Winningham  
Kim Yu, MD, FAAFP  
Andrew Zinkel, MD, MBA

### Breakout Room 2

Richard Antonelli, MD, MS  
Kathleen Balestracci, PHD, MSW  
Brian Buys, RN, MBA  
David Key  
Joseph Kunisch, PhD, RN-BC, CPHA  
Michael Lieberman, MD, MS  
Brent Peery, Dmin  
Ann Polich, MD, MPH, MBA  
Walter Rosenberg, MSW, MHSM, LCSW  
Stacie Schilling  
Colleen Skau, PhD  
Alexis Snyder

# Transition to Working Session

## Breakout Session Discussion Questions

- What impact could the Gravity Project have on EHR-based care communication and care coordination?
- What data collection considerations should be included when implementing these definitions in the EHR (e.g., data provenance, data accuracy, collection burden)?
- How should these data sets be used for care communication and care coordination quality measurement (e.g., risk stratification, risk adjustment, new measure concepts)?
- What other SDOH data beyond the Gravity Project could be used for care communication and care coordination quality measurement?

## Lead Discussant Working Session Report Outs

**In seven minutes, share:**

- 2-3 data collection considerations when implementing the Gravity Project domains in the EHR
- 2-3 recommendations on how SDOH data can be used for care communication and care coordination quality measurement

# NQF Member and Public Comment

Victoria Freire



# Next Steps

Victoria Freire

## Next Steps

- Submit any additional input on the SDOH domains and ideal capabilities and capacities of EHRs via email to the project inbox
- Next web meeting will be held on Monday, March 21, 2022, from 12:00-2:00pm ET
- Save the date for all web meetings
- Contact the project team with any questions, or if you did not receive any of the meeting invitations
- Project inbox: [EHRCareCoordination@qualityforum.org](mailto:EHRCareCoordination@qualityforum.org)

# THANK YOU.

**NATIONAL QUALITY FORUM**

<http://www.qualityforum.org>