



NATIONAL
QUALITY FORUM

Food Insecurity and Housing Instability

Expert Panel Post-Comment Webinar
December 4, 2017

WELCOME

TO NATIONAL QUALITY FORUM

Over 425 Members Strong

Agenda

- Welcome
- Project Objectives
- Review of Expert Panel & Public Comments
- Member and Public Comment
- Next Steps

NQF Project Staff

- Andrew Anderson, MHA, Senior Director
- John Bernot, MD, Senior Director
- Jean-Luc Tilly, Senior Data Analytics Manager
- Vanessa Moy, MPH, Project Analyst

Expert Panel

- **Ron Bialek, MPP, CQIA**
 - *President, Public Health Foundation*
- **Traci Ferguson, MD, MBA, CPE**
 - *Vice President, Clinical Services Management, WellCare Health Plans, Inc.*
- **Rebecca Freeman, PhD, RN, PMP**
 - *Chief Nursing Office of the National Coordinator for Health Information Technology (ONC)*
- **Nancy Garrett, PhD**
 - *Chief Analytics Officer, Hennepin County Medical Center*
- **Laura Gottlieb, MD, MPH**
 - *UCSF Associate Professor of Family and Community Medicine, Director*
- **Romana Hasnain-Wynia, PhD, MS**
 - *Chief Research Officer, Denver Health*
- **Nancy Lawton-Kluck**
 - *Chief Philanthropy Officer, Geisinger Health System*
- **Lynn Knox**
 - *Statewide Health Care Liaison, Oregon Food Bank*
- **Amanda Reddy, MS**
 - *Executive Director, National Center for Healthy Housing*
- **Sarah Hudson Scholle, DrPH, MPH**
 - *Vice President, Research and Analysis, National Committee for Quality Assurance*
- **Prabhjot Singh, MD, PhD**
 - *Director of Arnhold Institute for Health, Chair of Department of Health System Design and Global Health at Mount Sinai Health System*
- **Clare Tanner, PhD, MS**
 - *Program Director, Center for Data Management and Translation Research at Michigan Public Health Institute*
- **Ginger Zielinskie**
 - *President and CEO, Benefits Data Trust*

Review of Project Objectives

Review of Project Objectives

- To develop a framework for state Medicaid programs to better assess and address social needs in healthcare, using food insecurity and housing instability as illustrative examples
- As the Expert Panel, you will:
 - *provide feedback on how to incorporate the comments received into the final report*

Review of Expert Panel & Public Comments

Comments Received

- 56 comments from 12 individuals/organizations
- Summary of comments:
 - *Comments generally in support of the Expert Panel's work and cited the importance and relevance to State Medicaid agencies*
 - *Suggestions for additional sources, definition of terms, references, and examples*
 - *Highlighted missing information*
 - *Requests for additional examples*
 - *Requests for more precision and detail in describing previous work*
 - *Requests for changes to the framework diagram to better convey the Panel's recommendations*
 - *Need to ensure consistency and accuracy in the use of terms*

Background

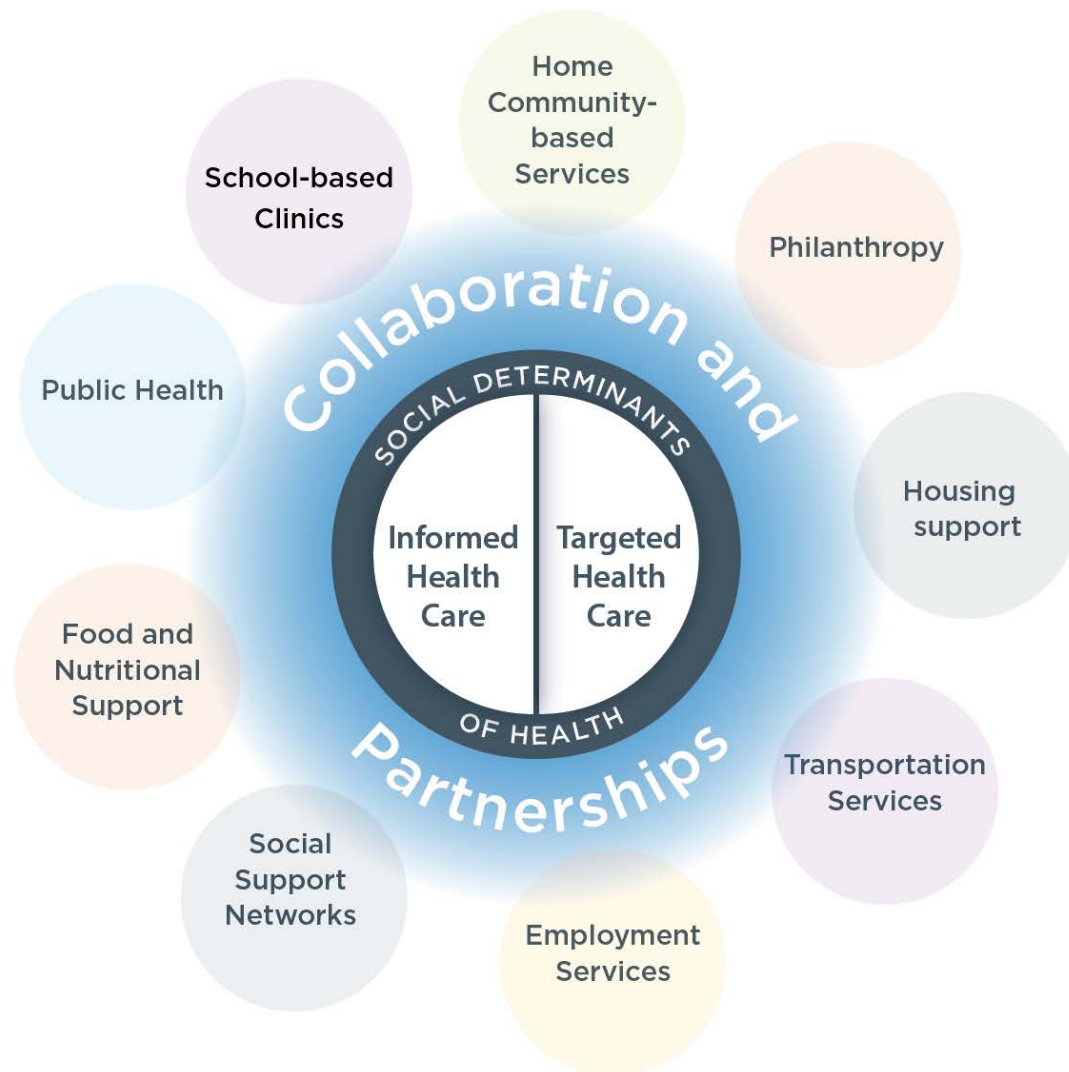
- Helpful line edits with additional background information on housing instability from HUD
- Cite more recent literature on the impact of food insecurity on health outcomes
- Cite additional resources directly from state Medicaid authorities
- Acknowledge pressure on states to improve population health
- Provide additional context about where we came from, where we are now, and where we go from here for each measurement area

Framework Overview

- Include statement that demonstrates how the framework builds on previous frameworks (not “developed” by the Expert Panel)
- Include statement on how the framework is unique and clearly define the scope
 - » Clearer emphasis on health care delivery
- Diagram doesn't clearly convey the meaning of informed vs. targeted care
- Suggestions to change “SDOH Targeted Care” to “SDOH Coordinated Care”
- Suggestion to include policy and environment in the framework diagram and discussion
- Discuss health care organizations role as a convener through the required CHNA/CHP

Questions:

- Are there specific frameworks we should explicitly acknowledge in the paper?
- Should we use SDOH coordinated care rather than targeted to better make the distinction between informed and targeted?



Question: How can we better convey the Expert Panel's recommendations in the diagram?

Measures and Interventions

- Suggested line edits, examples, and references from HUD
- Add example interventions for housing instability
- Include discussion of American Housing Survey
- Remove references to measures concepts and discuss them in the context of types of data to collect
- Request for more detail on measures collected and what readers are supposed to glean from them
 - *Clarify the categories of measures found (PROs, PROMs, and PRO-PMs)*
 - *Reframe search for measures as supplementary and not primary*

Question:

- How prominently would you represent the sections of the report in measurement?

Recommendations

- Several suggested line edits, additional examples, corollaries, and references for each recommendation
- Request for recommendations that focus on “SDOH Informed Care” (heavy focus on targeted care)
- Request for further tailoring to state Medicaid agencies
- Suggestion to add examples on state innovation models, innovator accelerator, Strong Start, and other Medicaid incentive programs
- Suggestion to recommend that Medicaid pay for “SDOH Targeted Care”

Questions:

- Where can we find other examples of screening being used to inform care or how it’s built into a clinical work flow?
- What would the expert panel like to recommend to support SDOH informed care?
- Do we need recommendation about payment?

Examples

- Confusion between the terms interventions, use cases, and examples
- Suggestion to state the difference between area-based measures and person reported measures explicitly
- Suggestion to add additional examples of area-based measurement
- Several suggested examples of essential hospitals doing community-based work
- Examples of how state Medicaid programs are determining allowable reimbursable housing related expenses

Member and Public Comment

Next Steps

Project Timeline



Thank you.