



**NATIONAL  
QUALITY FORUM**

Driving measurable health  
improvements together

<https://www.qualityforum.org>

# Geriatrics and Palliative, Spring 2022, Measure Review Cycle

## Post-Comment Standing Committee Meeting

Kathryn Goodwin, Senior Director

Isaac Sakyi, Manager

Tristan Wind, Analyst

Victoria Quinones, Project Manager

Matilda Epstein, Associate

*October 18, 2022*

*Funded by the Centers for Medicare & Medicaid Services under contract HHSM-500-2017-00060I Task Order HHSM-500-T0001*

# Welcome

## Housekeeping Reminders

- This is a Zoom meeting with audio and video capabilities
- Please mute your computer when not speaking
- The system will allow you to mute/unmute yourself and turn your video on/off throughout the event
- We encourage you to keep the video on throughout the event
- We encourage you to use the following features
  - ▣ Chat box: to message NQF staff or the group
  - ▣ Raise hand: to be called upon to speak
- We will conduct a Standing Committee roll call once the meeting begins

If you are experiencing technical issues, please contact the NQF project team at [palliative@qualityforum.org](mailto:palliative@qualityforum.org)

## Meeting Ground Rules

- Be prepared, having reviewed the meeting materials beforehand
- Respect all voices
- Remain engaged and actively participate
- Base your evaluation and recommendations on the measure evaluation criteria and guidance
- Keep your comments concise and focused
- Be respectful and allow others to contribute
- Share your experiences
- Learn from others

## Agenda

- Consideration of Consensus Not Reached Measure
- Related and Competing Measures
- NQF Member and Public Comment
- Next Steps
- Adjourn

## **Project Team — Geriatrics and Palliative (GPC) Committee**



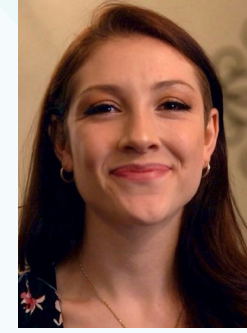
**Kathryn Goodwin,  
MS, CHES  
Sr. Director**



**Isaac Sakyi,  
MSGH  
Manager**



**Tristan Wind,  
BS, ACHE-SA  
Analyst**



**Matilda Epstein  
MPH  
Associate**



**Poonam Bal,  
MHSA  
Sr. Director**



**Victoria Quinones  
AA, PMP  
Project Manager**



**Taroon Amin,  
PhD  
Consultant**

# Geriatrics and Palliative Care Spring 2022 Cycle Standing Committee

- Amy Berman, BSN, LHD, FAAN (co-chair)
- R. Sean Morrison, MD (co-chair)
- Sree Battu, MD
- Samira Beckwith, LCSW, FACHE, LHD
- Cleanne Cass, DO, FAAHPM, FAAFP
- Jeff Garland, DMin, Ed.S, BCC - PCHAC
- Marian Grant, DNP, RN
- George Handzo, BCC, CSSBB
- Arif Kamal, MD, MBA, MHS, FACP, FAAHPM
- Kate Lichtenberg, DO, MPH, FAAFP
- Kelly Michelson, MD, MPH, FCCM, FAP
- Christopher Laxton, CAE
- Douglas Nee, Pharm D, MS
- Laura Porter, MD
- Tracy Schroepfer, PhD, MSW
- Linda Schwimmer
- Christine Seel Ritchie, MD, MSPH
- Janelle Shearer, RN, BSN, MA, CPHQ
- Karl Steinberg, MD, CMD, HMDC
- Paul Tatum, MD, MSPH, CMD, FAAHPM, AGSF
- Sarah Thirlwell, MSc, MSc(A), RN, AOCNS, CHPN, CHPCA, CPHQ

## Spring 2022 Cycle Measures

### ■ Four measures were reviewed

#### ▣ Measures Recommended for Endorsement

- NQF #0210 Percentage of Patients Who Died from Cancer Receiving Chemotherapy in the Last 14 Days of Life (American Society of Clinical Oncology [ASCO])
- NQF #0213 Percentage of Patients Who Died from Cancer Admitted to the Intensive Care Unit (ICU) in the Last 30 Days of Life (ASCO)
- NQF #0216 Percentage of Patients Who Died from Cancer Admitted to Hospice for Less Than Three Days (ASCO)

#### ▣ Consensus Not Reached Measures

- NQF #1641 Hospice and Palliative Care –Treatment Preferences (University of North Carolina-Chapel Hill)



# Voting Test

# **Review and Discuss Consensus Not Reached Measure**

## Memo

# Screenshare Memo

# Related and Competing Measures

## Related and Competing Measures (Cont)

- If a measure meets the four criteria **and** there are endorsed/new related measures (same measure focus **or** same target population) or competing measures (both the same measure focus **and** same target population), the measures are compared to address harmonization and/or selection of the best measure.

Target Population	Same concepts for measure focus-target process, condition, event, outcome	Different concepts for measure focus-target process, condition, event, outcome
Same target population	<b>Competing measures-Select best measure</b> from competing measures or justify endorsement of additional measure(s).	<b>Related measures-Harmonize</b> on target patient population or justify differences.
Different target patient population	<b>Related measures-Combine</b> into one measure with expanded target patient population or justify why different harmonized measures are needed.	Neither harmonization nor competing measure issue.

## Related and Competing Measures (continued)

- Related and competing measures will be grouped and discussed after recommendations for all related and competing measures are determined. Only measures recommended for endorsement will be discussed.
- The Standing Committee can discuss harmonization and make recommendations. The developers of each related and competing measure will be encouraged to attend any discussion.

## Related Measures

- #0210, #0213, and #0216 have been identified as related to each other
- #0213 was also identified to be related to:
  - ▣ #1626 Patients Admitted to ICU Who Have Care Preferences Documented
- #0216 was also identified to be related to:
  - ▣ #2651 CAHPS® Hospice Survey (Experience with Care)
  - ▣ #3235 Hospice and Palliative Care Composite Process Measure-Comprehensive Assessment at Admission
- #1641 was identified to be related to:
  - ▣ #0326 Advance Care Plan

## Related Measure Discussion

- Are the measure specifications for the related measure harmonized to the extent possible?
- Are there differences that could impact interpretability and add data collection burden?
- Are the differences justified?



## #1641 Related Measures

Category	#0326 Advance Care Plan
Steward/Developer	National Committee for Quality Assurance
Description	Percentage of patients aged 65 years and older who have an advance care plan or surrogate decision maker documented in the medical record or documentation in the medical record that an advance care plan was discussed but the patient did not wish or was not able to name a surrogate decision maker or provide an advance care plan.
Numerator	Patients who have an advance care plan or surrogate decision maker documented in the medical record or documentation in the medical record that an advance care plan was discussed but patient did not wish or was not able to name a surrogate decision maker or provide an advance care plan.
Denominator	All patients aged 65 years and older.
Target Population	Elderly; Dual eligible beneficiaries
Care Setting	Outpatient Services
Level of Analysis	Clinician: Group/Practice

## Related Measure Discussion

- Are the measure specifications for the related measure harmonized to the extent possible?
- Are there differences that could impact interpretability and add data collection burden?
- Are the differences justified?

# **NQF Member and Public Comment**

# Next Steps

# Activities and Timeline – Spring 2022 Cycle

**\*All times ET**

Meeting	Date, Time*
CSAC Review	December 9 & 12
Appeals Period (30 days)	December 14 – January 13

- Staff will incorporate comments and responses to comments into meeting materials for the Consensus Standards Approval Committee (CSAC) meeting
- CSAC meets to endorse measures
- Opportunity for public to appeal endorsement decision

## Project Contact Info

- Email: [palliative@qualityforum.org](mailto:palliative@qualityforum.org)
- NQF phone: 202-783-1300
- Project page:  
[https://www.qualityforum.org/Geriatrics and Palliative Care.aspx](https://www.qualityforum.org/Geriatrics_and_Palliative_Care.aspx)
- SharePoint  
site: <https://share.qualityforum.org/portfolio/GeriatricsPalliativeCare/SitePages/Home.aspx>

# THANK YOU.

**NATIONAL QUALITY FORUM**

<https://www.qualityforum.org>