

Measure Applications Partnership

All MAP Orientation Web
Meeting

August 12, 2015



NATIONAL
QUALITY FORUM



Welcome

MAP Orientation Overview

- **Statutory Authority in Pre-Rulemaking**
- MAP Overview
- Approach to Pre-Rulemaking
- Public Comment
- Next Steps

Measure Applications Partnership

Statutory Authority

The Affordable Care Act (ACA) requires HHS to contract with the consensus-based entity (i.e., NQF) to **“convene multi-stakeholder groups to provide input on the selection of quality measures”** for public reporting, payment, and other programs. (ACA Section 3014).

The Role of MAP

In pursuit of the National Quality Strategy, the MAP:

- Informs the selection of performance measures to achieve the goal of improvement, transparency, and value for all
- Provides input to HHS during pre-rulemaking on the selection of performance measures for use in public reporting, performance-based payment, and other federal programs
- Identifies gaps for measure development, testing, and endorsement
- Encourages measurement alignment across public and private programs, settings, levels of analysis, and populations to:
 - Promote coordination of care delivery
 - Reduce data collection burden

What is Rulemaking?

- Rulemaking refers to the process that government agencies (such as the Department of Health and Human Services (HHS)) use to create regulations.

Congress sets broad policy mandates by passing statutes

The public is informed of and can comment on proposed rules

The proposed rule becomes the final rule with some minor modifications.

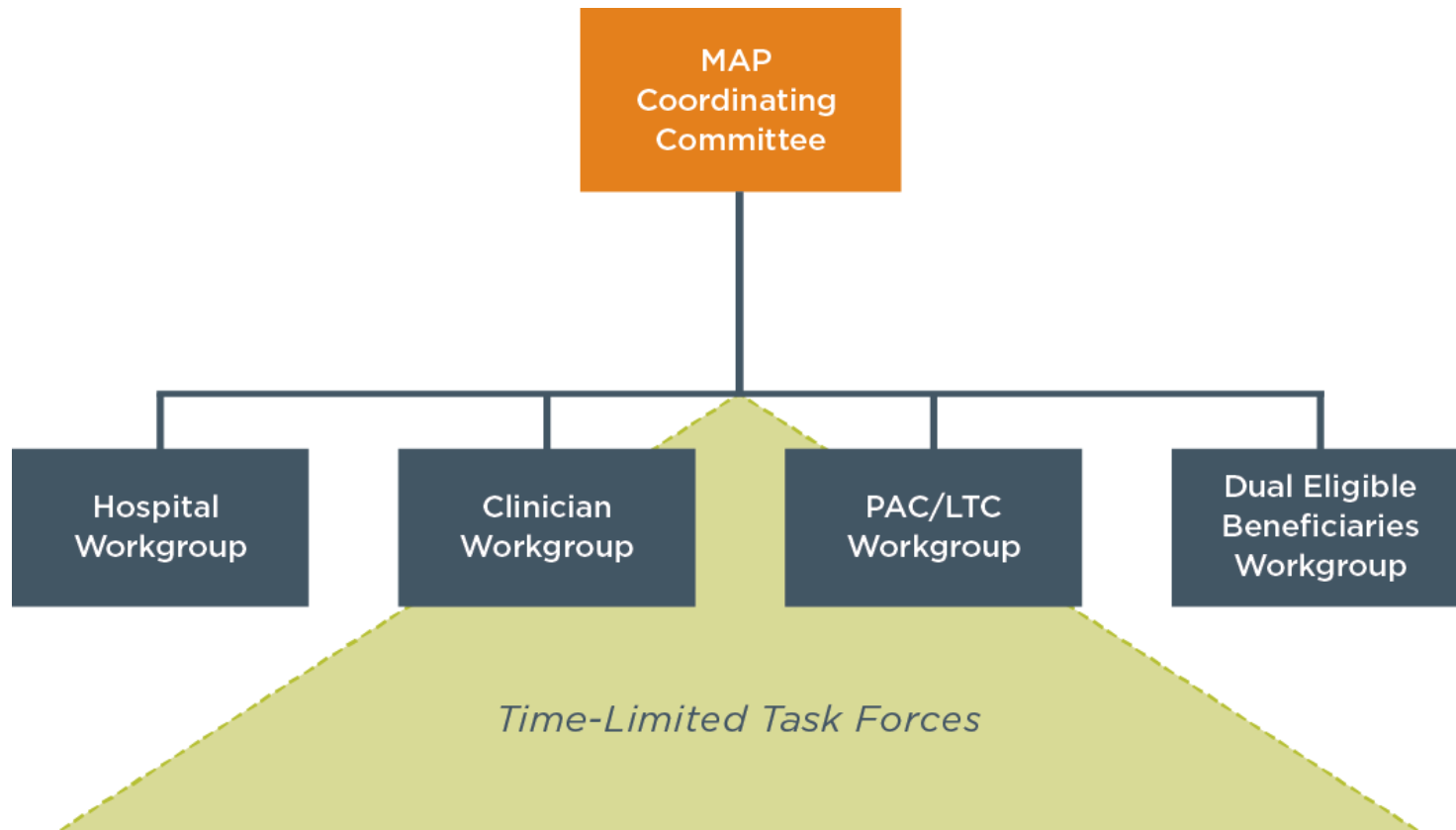
What is the value of pre-rulemaking input?

- Facilitates multi-stakeholder dialogue that includes HHS representatives
- Allows for a consensus-building process among stakeholders in a transparent open forum
- Proposed laws are “closer to the mark” because the main provisions related to performance measurement have already been vetted by the affected stakeholders
- Reduces the effort required by individual stakeholder groups to submit official comments on proposed rules

MAP Orientation Overview

- Statutory Authority in Pre-Rulemaking
- **MAP Overview**
- Approach to Pre-Rulemaking
- Public Comment
- Next Steps

MAP Structure



MAP Members

Three types of members:

- **Organizational Representatives**
 - Constitutes the majority of MAP members
 - Include those that are interested in or affected by the use of measures
 - Organizations designate their own representatives
- **Subject Matter Experts**
 - Serve as individual representatives bringing topic specific knowledge to MAP deliberations
 - Chairs and co-chairs of MAP's Coordinating Committee, workgroups, and task forces are considered subject matter experts
- **Federal Government Liaisons**
 - Serve as ex-officio, non-voting members representing a Federal agency

MAP Coordinating Committee Members

- **Elizabeth McGlynn, PhD, MPP (Co-Chair)**
- **Harold Pincus, MD (Co-Chair)**
- Lynda Flowers, JD, MSN, RN
- Marissa Schlaifer, RPh, MS
- Steven Brotman, MD, JD
- Shaun O'Brien
- Aparna Higgins, MA
- R. Barrett Noone
- Amir Qaseem, MD, PhD, MHA
- Frank G. Opelka, MD, FACS
- David Gifford, MD, MPH
- Rhonda Anderson, RN, DNSc, FAAN
- Carl Sirio, MD
- Sam Lin, MD, PhD, MBA
- Marla J. Weston, PhD, RN
- Trent T. Haywood, MD, JD
- Lisa McGiffert
- Chip N. Kahn, III, MPH
- Richard Gundling, FHFMA, CMA
- Mark R. Chassin, MD, FACP, MPP, MPH
- Melissa Danforth
- Gail Hunt
- Foster Gesten, MD, FACP
- Steve Wojcik
- Mary Barton, MD, MPP
- Carol Sakala
- Elizabeth Mitchell
- William E. Kramer, MBA
- Christopher M. Dezii, RN, MBA, CPHQ
- Richard Antonelli, MD, MS
- Bobbie Berkowitz, PhD, RN, CNAA, FAAN
- Marshall Chin, MD, MPH, FACP
- Richard Kronick, PhD/Nancy J. Wilson, MD, MPH
- Chesley Richards, MD, MH, FACP
- Patrick Conway, MD, MSc
- Kevin Larsen, MD, FACP

MAP Coordinating Committee Charge

- Advise HHS on the coordination of performance measurement strategies across public sector programs, across settings of care, and across public and private payers;
- Set the strategic direction for the Measure Applications Partnership; and
- Give direction to and ensure alignment among the MAP advisory workgroups.

MAP Coordinating Committee NQF Staff Support Team



**Taroon Amin,
Senior Director-
Consultant**



**Wunmi Isijola,
Senior Project
Manager**



**Erin O'Rourke,
Senior Project
Manager**



**Alexandra
Ogungbemi,
Project Analyst**

**Project Email:
MAPCoordinatingCommittee@qualityforum.org**

MAP Hospital Workgroup

- **Ronald S. Walters, MD, MBA, MHA, MS (co-chair)**
- **Cristie Upshaw Travis, MSHHA (co-chair)**
- Kelly Trautner
- David Engler, PhD
- Nancy Foster
- Donna Slosburg, BSN, LHRM, CASC
- Wei Ying, MD, MS, MBA
- Andrea Benin, MD
- Allen Nissenson, MD, FACP, FASN, FNKF
- Helen Haskell, MA
- Shelley Fuld Nasso
- Brock Slabach, MPH, FACHE
- Shekhar Mehta, PharmD, MS
- Richard Bankowitz, MD, MBA, FACP
- Martin Hatlie, JD
- Jeff Jacobs, MD
- Louise Y. Probst, MBA, RN
- Gregory Alexander, PhD, RN, FAAN
- Elizabeth Evans, DNP
- Jack Fowler, PhD
- Mitchell Levy, MD, FCCM, FCCP
- Dolores Mitchell
- R. Sean Morrison, MD
- Michael P. Phelan, MD, FACEP
- Ann Marie Sullivan, MD
- Pamela Owens, PhD
- Daniel Pollock, MD
- Pierre Yong, MD, MPH
- *Geisinger Health System*

MAP Hospital Measurement Charge

MAP Hospital Workgroup provides input on measures to be implemented through the federal rulemaking process for the following programs:

- Hospital Inpatient Quality Reporting (IQR)
- Hospital Value-Based Purchasing (VBP)
- Medicare and Medicaid EHR Incentive Program for Hospitals and CAHs (Meaningful Use)
- Hospital Outpatient Quality Reporting (OQR)
- Ambulatory Surgical Center Quality Reporting (ASCQ)
- Inpatient Psychiatric Hospital Quality Reporting
- PPS-Exempt Cancer Hospital Quality Reporting
- Hospital-Acquired Conditions Payment Reduction (HAC)
- End-Stage Renal Disease QIP (ESRD)

MAP Hospital Workgroup Staff Support Team



**Melissa
Mariñelarena,
Senior Director**

**Erin O'Rourke,
Senior Project
Manager**



**Project Email:
MAPHospital@qualityforum.org**



**Zehra Shahab,
Project Manager**

**Kaitlynn Robinson-Ector,
Project Analyst**



MAP Clinician Workgroup

- **Bruce Bagley, MD (Co-Chair)**
- **Eric Whitacre, MD, FACS (Co-Chair)**
- Amy Moyer
- Scott Friedman, MD
- Terry Adirim, MD, MPH, FAAP
- Diane Padden, PhD, CRNP, FAANP
- Paul N. Casale, MD, FACC
- David J. Seidenwurm, MD
- Angel Oddo
- Janis Orlowksi, MD
- Rachel Grob, PhD
- Robert Krughoff, JD
- Amy Compton-Phillips, MD
- Cynthia Pellegrini
- Beth Averbeck, MD
- Bruce W. Sherman, MD, FCCP, FACOEM
- James Pacala, MD, MS
- David Hopkins, PhD
- Marci Nielsen, PhD, MPH
- Winfred Wu, MD, MPH
- Barb Landreth, RN, MBA
- Luther T. Clark, MD
- Constance Dahlin, MSN, ANP-BC, ACHPN, FPCN, FAAN
- Peter Briss, MD, MPH
- Kate Goodrich, MD
- Girma Alemu
- *Carolina's HealthCare System*

MAP Clinician Workgroup Charge

MAP Clinician Workgroup provides input on measures to be implemented through the federal rulemaking process for the following programs:

- Merit-based Incentive Payment System (MIPS)
- Medicare Shared Savings Program (Accountable Care Organizations)
- Physician Compare

MAP Clinician Workgroup

NQF Staff Support Team



**Reva Winkler,
Senior
Director**

**Andrew Lyzenga,
Senior Project
Manager**



**Project Email:
MAPClinician@qualityforum.org**



**Poonam Bal,
Project Manager**

**Severa Chavez,
Project Analyst**



MAP Post Acute Care / Long Term Care (PAC/LTC) Workgroup

- **Carol Raphael, MPA (co-chair)**
- **Debra Saliba , MD, MPH (co-chair)**
- Joseph Agostini, MD
- Kim Elliott, PhD, CPH
- Robyn Grant, MSW
- E. Liza Greenberg, RN, MPH
- Roger Herr, PT, MPA, COS-C
- Gerri Lamb, PhD
- Bruce Leff, MD
- James Lett, II, MD, CMD
- Alan Levitt, MD
- Cari R. Levy, MD, PhD, CMD
- Sean Muldoon, MD
- Paul Mulhausen, MD, MHS
- Eugene Nuccio, PhD
- Elizabeth Palena Hall, MIS, MBA, RN
- Lisa Patton, PhD
- Pamela Roberts, PhD, OTR/L, SCFES, CPHQ, FAOTA
- Suzanne Snyder Kauserud, PT
- Carol Spence, PhD
- Thomas von Sternberg, MD
- Arthur Stone, MD
- Jennifer Thomas, PharmD
- Lisa Winstel
- Sandy Markwood, MA

MAP PAC/LTC Workgroup Charge

MAP PAC/LTC Workgroup provides input on measures to be implemented through the federal rulemaking process for the following programs:

- Nursing Home Quality Initiative
- Home Health Quality Reporting
- Inpatient Rehabilitation Facility Quality Reporting
- Long-Term Care Hospital Quality Reporting
- Hospice Quality Reporting

MAP Post Acute Care/ Long-Term Care Workgroup

NQF Staff Support Team

Project Email:
MAPPAC-LTC@qualityforum.org



**Sarah Sampsel,
Senior Director-
Consultant**



**Peg Terry,
Senior Director**



**Katie Streeter,
Senior Project
Manager**



**Mitra Ghazinour,
Project Manager**



**Laura Ibragimova,
Project Analyst**

Measure Applications Partnership

NQF Data Analytics Team



**Robert Saunders,
Senior Director**



**Allen Leavens,
Senior Director**

**Project Email:
MeasureApplications@qualityforum.org**

MAP Also Provides Guidance on Programs Not Subject to Rulemaking

- Current
 - Demonstrations to integrate care for dual eligible beneficiaries
 - Medicaid Adult Core Set
 - Medicaid/CHIP Child Core Set
- Past
 - Health Insurance Exchange Quality Rating System
- Potential for Future
 - Programs from the Centers for Medicare and Medicaid Innovation (CMMI)
 - And others...

Role of the Dual Eligible Beneficiaries Workgroup in Pre-Rulemaking

Cross-Program and Cross-Setting Measurement Considerations for Complex Consumers

- Medicare-Medicaid dual eligible beneficiaries access all types of healthcare, therefore their care is measured in all of the programs reviewed during pre-rulemaking
- Members of the Duals Workgroup participate in the setting-specific workgroups as non-voting liaisons to share their perspectives
- The Dual Eligible Beneficiaries Workgroup meets to consider cross-program and cross-setting measurement issues relevant to complex consumers (e.g., care transitions, person-centered care)

MAP Dual Eligible Beneficiaries Workgroup Charge

- Consider the range of measurement issues relevant to consumers with complex medical and social needs, such as
 - Persistent gaps in available measures
 - Stratification and risk adjustment
 - Multiple chronic conditions
 - Shared accountability
- Maintain a “family of measures” relevant to dual eligible beneficiaries to promote uptake and alignment of these measures across a variety of programs

MAP Dual Eligible Beneficiaries Workgroup

- **Jennie Chin Hansen, RN, MS, FAAN (co-chair)**
- **Nancy Hanrahan, PhD, PN, FAAN (co-chair)**
- Susan Reinhard, RN, PhD, FAAN
- Gwendolen Buhr, MD, MHS, Med, CMD
- Gregg Warshaw, MD
- Christine Aguiar
- Michael Monson
- E. Clarke Ross, DPA
- Cheryl Irmiter, PhD
- Jette Hogenmiller, PhD, MN, APN, CDE, TNCC
- George Andrews, MD, MBA, CPE
- Thomas H. Lutzow, PhD, MBA
- Alice Lind, MPH, BSN
- Joan Levy Zlotnik, PhD, ACSW
- Aline Holmes, DNP, MSN, RN
- Mady Chalk, MSW, PhD
- James Dunford, MD
- K. Charlie Lakin, PhD
- Ann Lawthers, ScD
- Ruth Perry, MD
- Kimberly Rask, MD PhD
- Gail Stuart, PhD, RN
- Jamie Kendall, MPP
- Venesa J. Day
- D.E.B. Potter, MS

MAP Duals Eligible Beneficiaries Workgroup

NQF Staff Support Team



**Sarah Lash,
Senior Director**

**Allen Leavens,
Senior Director**



**Project Email:
MeasureApplications@qualityforum.org**

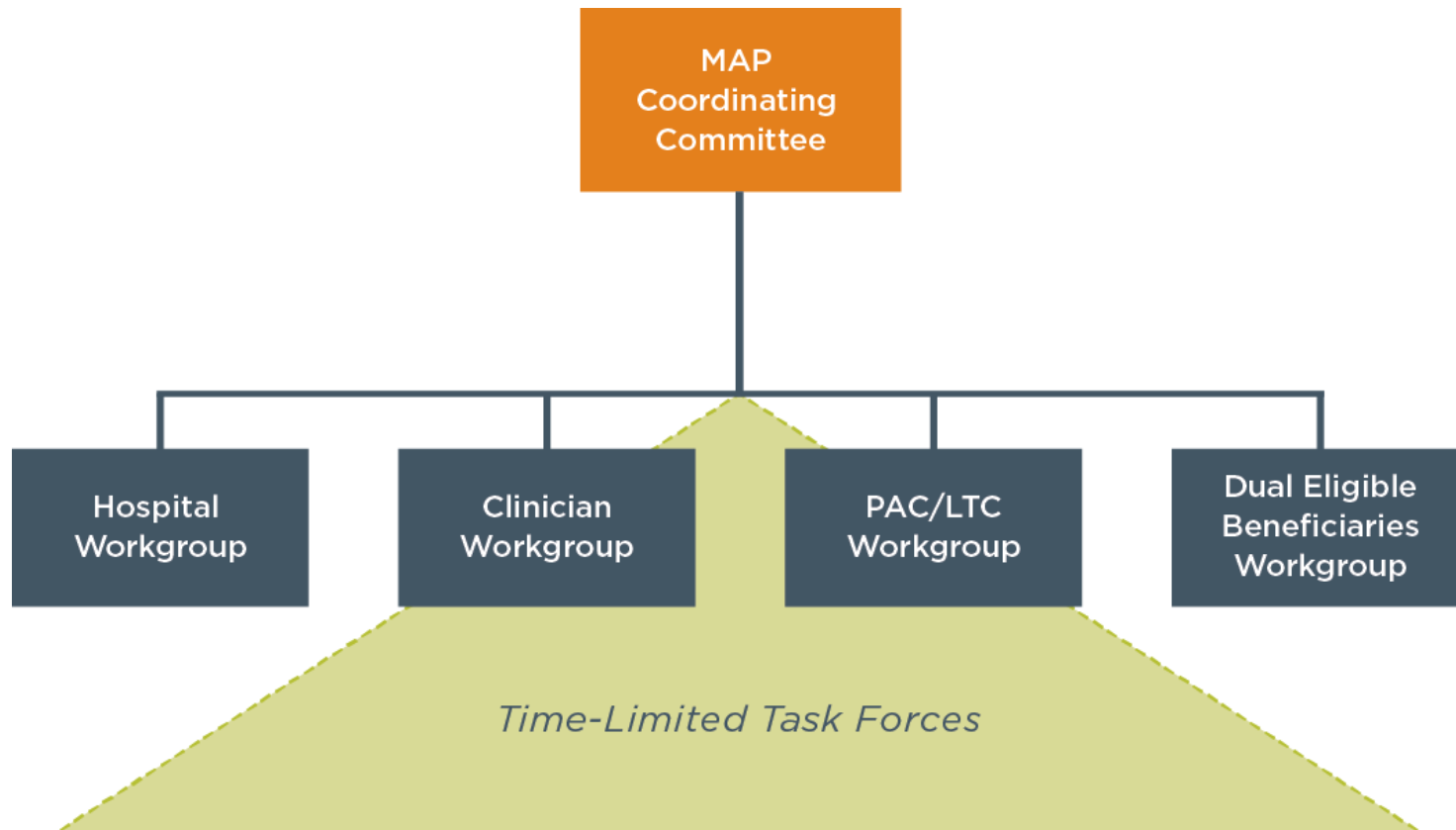


**Megan Duevel Anderson,
Project Manager**

**Kaitlynn Robinson-Ector,
Project Analyst**



MAP Structure



Charge of the MAP Medicaid Adult and Child Task Forces

- Each year, the Medicaid Task Forces advise HHS on strengthening the Adult and Child Core Sets of measures by:
 - Reviewing states' experiences voluntarily reporting measures
 - Refining previously identified measure gap areas and recommending potential measures for addition to the sets
 - Recommending measures for removal from the sets that are found to be ineffective
- Reports to HHS are released by September 1 of each year

MAP Medicaid Adult Task Force

- **Harold Pincus, MD (chair)**
- George Andrews, MD, MBA, CPE, FACP
- Anne Cohen, MPH
- Kirstin Dawson
- Sue Kendig, JD, WHNP-BC, FAANP
- Marc Leib, MD, JD
- Daniel Lessler, MD, MHA, FACP
- Nancy Hanrahan, PhD, RN, FAAN
- Lisa Patton, PhD
- Cynthia Pellegrini
- Marissa Schlaifer
- Alvia Siddiqi, MD, FAAFP
- Brock Slabach, MPH, FACHE
- Marsha Smith, MD, MPH, FAAP
- Ann Marie Sullivan, MD

MAP Medicaid Child Task Force

- **Foster Gesten, MD, FACP (chair)**
- Terry Adirim, MD, MPH, FAAP
- Andrea Benin, MD
- Luther Clark, MD
- Anne Cohen, MPH
- Jeff Convissar, MD
- Denise Cunill, MD, FAAP
- Denise Dougherty, PhD
- Carole Flamm, MD, MPH
- Ashley Hirai, PhD
- Susan Lacey, RN, PhD, FAAN
- Kevin Larsen, MD, FACP
- Marc Leib, MD, JD
- Cynthia Pellegrini
- Carol Sakala, PhD, MSPH
- Alvia Siddiqi, MD, FAAFP
- Sandra White, MD, MBA

Medicaid Adult Core Set and Medicaid/CHIP Child Core Set



All states are voluntarily reporting measures for children enrolled in Medicaid/CHIP.

More than half of states are voluntarily reporting measures for adults. (The adult program is newer.)

MAP Medicaid Adult and Child Task Forces

NQF Staff Support Team



**Sarah Lash,
Senior Director**



**Nadine Allen,
MAP Child Task Force
Project Manager**



**Severa Chavez,
Project Analyst**



**Shaconna Gorham,
Senior Project Manager**



**Zehra Shahab,
MAP Adult Task Force
Project Manager**

MAP Orientation Overview

- Statutory Authority in Pre-rulemaking
- MAP Overview
- **Approach to Pre-rulemaking**
- Public Comment
- Next Steps

MAP Pre-Rulemaking Approach

A closer look into how recommendations will be made

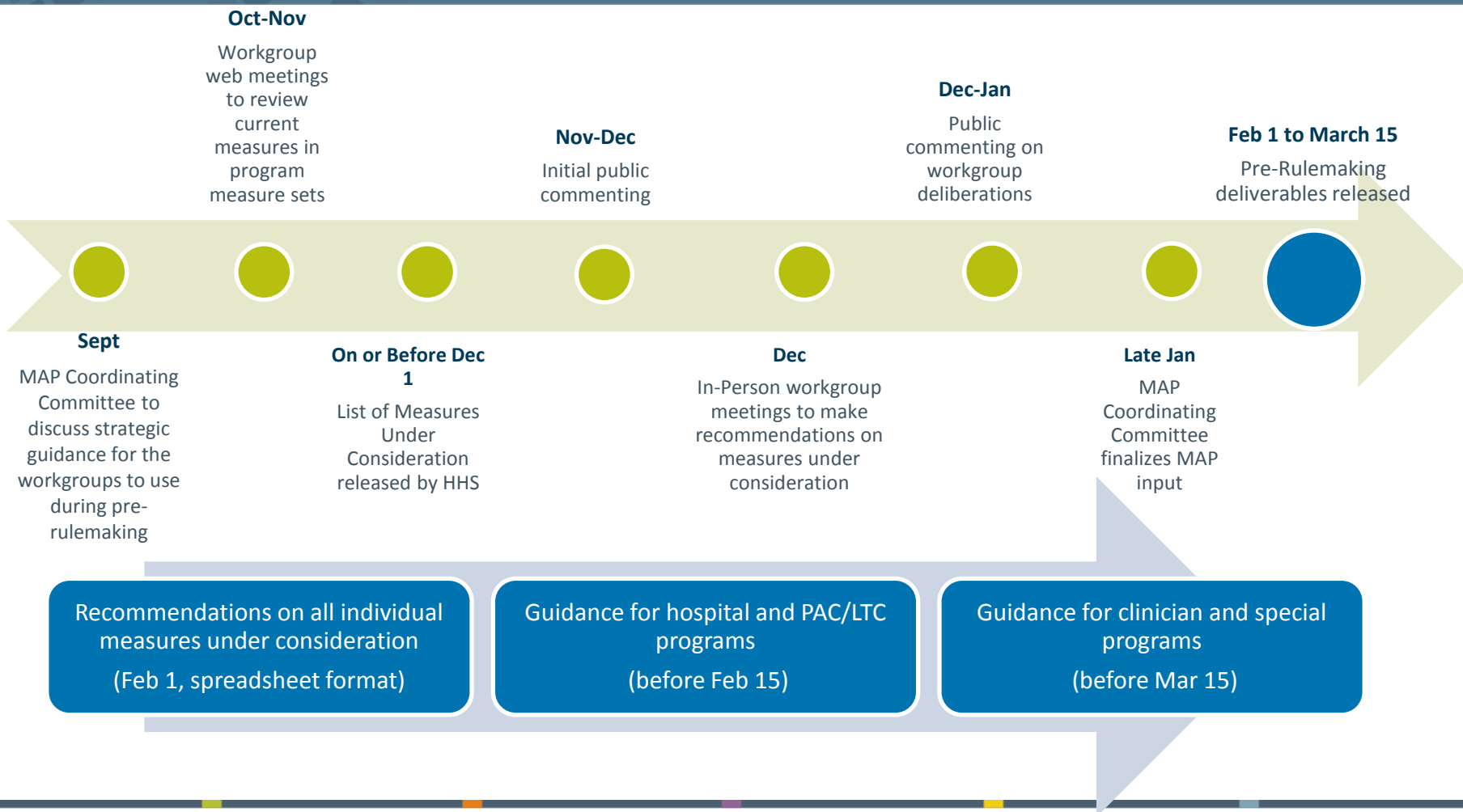
- The MAP Coordinating Committee will examine key strategic issues during their September 18th meeting to inform preliminary evaluations of measures under consideration;
- Each MAP workgroup will familiarize themselves with finalized program measure set for each program during the fall web-meetings and identify gaps in the current measure sets;
- The MAP workgroups will evaluate measures under consideration during their December in-person meetings informed by the preliminary evaluations completed by NQF staff;
- The MAP Coordinating Committee will examine the key cross issues identified by the MAP workgroups during their January 26-27th in-person meeting.

An advance look at what's coming up: September 18th Coordinating Committee Meeting

- The Coordinating Committee will be meeting to discuss three main topics: defining impact, goals for alignment, and an approach to identifying measure gaps.
- Discussion on these topics will assist MAP Workgroups and NQF staff apply the MAP preliminary analysis algorithm in their pre-rule making work
- **Homework:** MAP Coordinating Committee members will be asked to complete a survey to gather preliminary thoughts on these topics prior to the in-person meeting. Lead discussants will be identified to lead the discussion.

MAP Approach to Pre-Rulemaking

A look at what to expect





Q&A

Public and Member Comment

Next Steps: Upcoming Activities

Web Meetings

- Coordinating Committee - **August 20**
- Clinician Workgroup - **October 8**
- Hospital Workgroup - **October 13**
- PAC/LTC Workgroup - **October 16**
- Coordinating Committee - **November 13**
- Dual Eligible Beneficiaries Workgroup – **January 2016**
 - *Reviews recommendations from other groups and provide cross-cutting input during the second round of public comment*

In-Person Meetings

- Coordinating Committee- **September 18**
- Clinician Workgroup - **December 9-10**
- PAC/LTC Workgroup - **December 14-15**
- Hospital Workgroup - **December 16-17**
- Coordinating Committee- **January 26-27**