



Measure Applications Partnership All MAP Orientation Web Meeting

September 14, 2016 | 12:30 PM - 2:00 PM ET

Streaming Playback Audio Online

- Direct your web browser to <http://ngf.commpartners.com/se/Meetings/Playback.aspx?meeting.id=942055>
-

Meeting Objectives:

- Provide an overview of MAP
- Review MAP's pre-rulemaking approach
- Discuss upcoming MAP activities

12:30 pm	Welcome and Review of Meeting Objectives <i>Erin O'Rourke, Senior Director, NQF</i>
12:35 pm	Statutory Authority in Pre-Rulemaking <i>Erin O'Rourke</i>
12:40 pm	MAP Overview <i>Yetunde Ogungbemi, Project Analyst, NQF</i> <i>Kate McQueston, Project Manager, NQF</i> <i>Reva Winkler, Senior Director, NQF</i> <i>Sarah Sampsel, Senior Director, NQF</i> <i>Kate Buchanan, Project Manager, NQF</i> <i>Shaconna Gorham, Senior Project Manager, NQF</i>
1:30 pm	Approach to Pre-Rulemaking <i>Erin O'Rourke</i>
1:45 pm	Public and Member Comment
1:55 pm	Summary and Next Steps <i>Kim Ibarra, Project Manager, NQF</i>
2:00 pm	Adjourn



NATIONAL
QUALITY FORUM

Measure Applications Partnership

All MAP Orientation Web Meeting

September 14, 2016

Welcome

MAP Orientation Overview

- Statutory Authority in Pre-Rulemaking
- MAP Overview
- Approach to Pre-Rulemaking
- Public Comment
- Next Steps

Statutory Authority in Pre-Rulemaking

Measure Applications Partnership

Statutory Authority

The Affordable Care Act (ACA) requires HHS to contract with the consensus-based entity (i.e., NQF) to **“convene multi-stakeholder groups to provide input on the selection of quality measures” for public reporting, payment, and other programs.** (ACA Section 3014).

The Role of MAP

In pursuit of the National Quality Strategy, the MAP:

- Informs the selection of performance measures to achieve the goal of improvement, transparency, and value for all
- Provides input to HHS during pre-rulemaking on the selection of performance measures for use in public reporting, performance-based payment, and other federal programs
- Identifies gaps for measure development, testing, and endorsement
- Encourages measurement alignment across public and private programs, settings, levels of analysis, and populations to:
 - *Promote coordination of care delivery*
 - *Reduce data collection burden*

What is Rulemaking?

- Rulemaking refers to the process that government agencies (such as the Department of Health and Human Services (HHS)) use to create regulations.

Congress sets broad policy mandates by passing statutes

The public is informed of and can comment on proposed rules

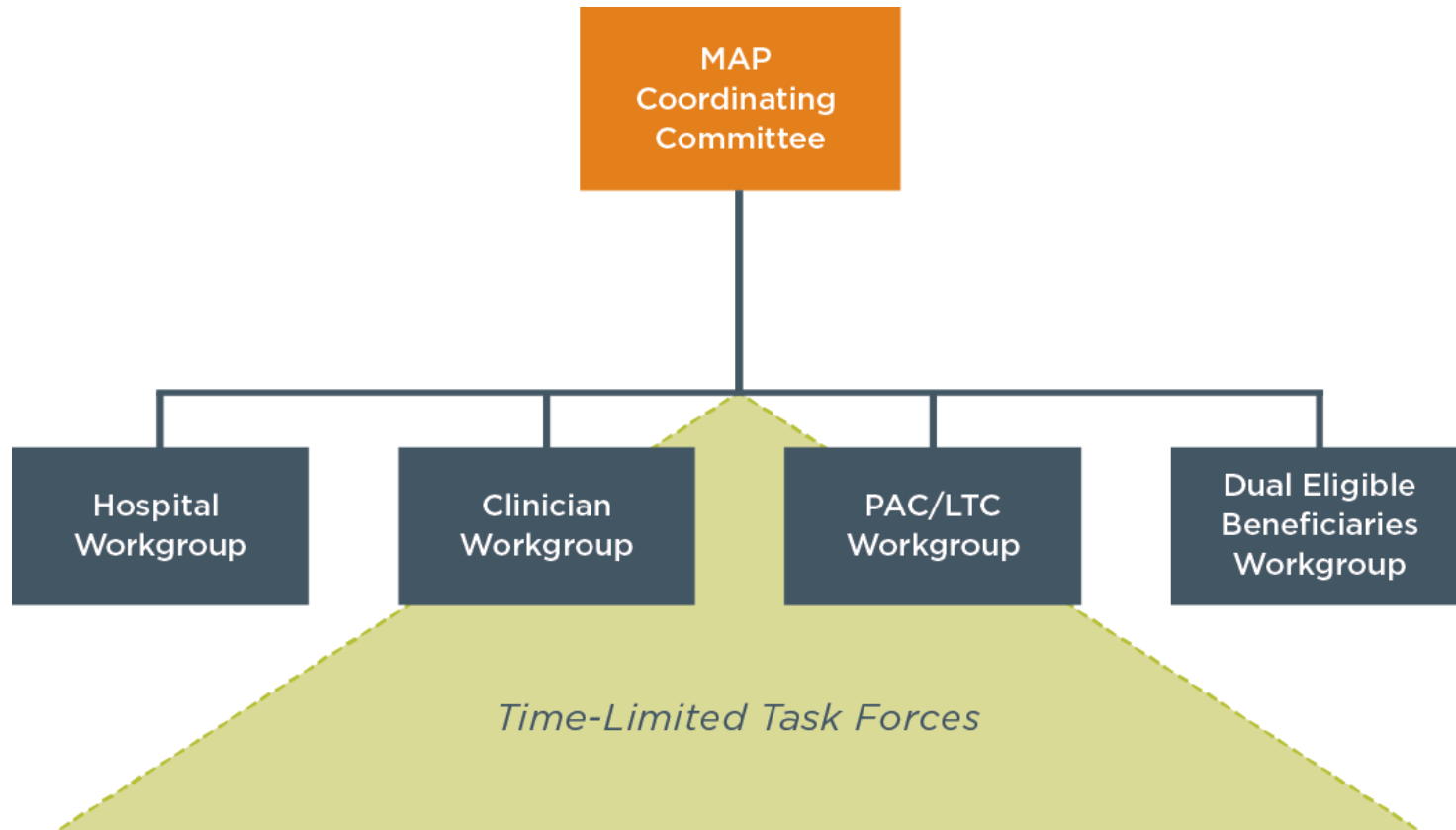
The proposed rule becomes the final rule with some minor modifications.

What is the value of pre-rulemaking input?

- Facilitates multi-stakeholder dialogue that includes HHS representatives
- Allows for a consensus-building process among stakeholders in a transparent open forum
- Proposed laws are “closer to the mark” because the main provisions related to performance measurement have already been vetted by the affected stakeholders
- Reduces the effort required by individual stakeholder groups to submit official comments on proposed rules

MAP Overview

MAP Structure



MAP Members

Three types of members:

- **Organizational Representatives**
 - *Constitutes the majority of MAP members*
 - *Include those that are interested in or affected by the use of measures*
 - *Organizations designate their own representatives*
- **Subject Matter Experts**
 - *Serve as individual representatives bringing topic specific knowledge to MAP deliberations*
 - *Chairs and co-chairs of MAP's Coordinating Committee, workgroups, and task forces are considered subject matter experts*
- **Federal Government Liaisons**
 - *Serve as ex-officio, non-voting members representing a Federal agency*

MAP Coordinating Committee Charge

- Advise HHS on the coordination of performance measurement strategies across public sector programs, across settings of care, and across public and private payers;
- Set the strategic direction for the Measure Applications Partnership; and
- Give direction to and ensure alignment among the MAP advisory workgroups.

MAP Coordinating Committee Members

- **Elizabeth McGlynn, PhD, MPP**
- **Harold Pincus, MD**
- Academy of Managed Care Pharmacy*
- AdvaMed
- AFL-CIO
- America's Health Insurance Plans
- American Board of Medical Specialties
- American Academy of Family Physicians
- American College of Physicians
- American College of Surgeons
- American HealthCare Association
- American Hospital Association
- American Medical Association
- American Nurses Association
- AMGA*
- Blue Cross and Blue Shield Association
- Consumers Union
- Healthcare Financial Management Association
- Maine Health Management Coalition
- The Joint Commission
- The Leapfrog Group
- National Alliance for Caregiving*
- National Association of Medicaid Directors
- National Business Group on Health
- National Committee for Quality Assurance
- National Partnership for Women & Families
- Network for Regional Healthcare Improvement
- Pacific Business Group on Health
- Pharmaceutical Research and Manufacturers of America (PhRMA)
- Providence Health and Services
- Richard Antonelli, MD, MS
- Doris Lotz, MD, MPH
- Agency for Healthcare Research and Quality (AHRQ)
- Centers for Disease Control and Prevention (CDC)
- Centers for Medicare & Medicaid Services (CMS)
- Office of the National Coordinator for Health Information Technology (ONC)

MAP Coordinating Committee

NQF Staff Support Team

- Erin O'Rourke: Senior Director
 - Kim Ibarra: Project Manager
 - Yetunde Ogungbemi: Project Analyst
 - Taroon Amin: Consultant
-
- **Project Email:**
MAPCoordinatingCommittee@qualityforum.org

MAP Hospital Workgroup Charge

MAP Hospital Workgroup provides input on measures to be implemented through the federal rulemaking process for the following programs:

- Hospital Inpatient Quality Reporting (IQR)
- Medicare and Medicaid EHR Incentive Program for Hospitals and CAHs (Meaningful Use)
- Hospital Value-Based Purchasing (VBP)
- Hospital Readmissions Reduction Program (HRRP)
- Hospital-Acquired Conditions Payment Reduction (HACRP)
- Hospital Outpatient Quality Reporting (OQR)
- Inpatient Psychiatric Facility Quality Reporting (IPFQR)
- Ambulatory Surgical Center Quality Reporting (ASCQR)
- PPS-Exempt Cancer Hospital Quality Reporting (PCHQR)
- End-Stage Renal Disease (ESRD) QIP

MAP Hospital Workgroup Members

- **Cristie Upshaw Travis, MSHHA**
- **Ronald S. Walters, MD, MBA, MHA, MS**
- America's Essential Hospitals
- American Hospital Association
- Baylor Scott & White Health (BSWH)
- Blue Cross Blue Shield of Massachusetts
- Children's Hospital Association
- Geisinger Health System
- Medtronic-Minimally Invasive Therapy Group
- Mothers Against Medical Error
- National Association of Psychiatric Health Systems (NAPHS)
- National Rural Health Association
- Nursing Alliance for Quality Care
- Pharmacy Quality Alliance
- Premier, Inc.
- Project Patient Care
- Service Employees International Union
- The Society of Thoracic Surgeons
- University of Michigan
- Gregory Alexander, PhD, RN, FAAN
- Elizabeth Evans, DNP
- Lee Fleisher, MD
- Jack Jordan
- R. Sean Morrison, MD
- Ann Marie Sullivan, MD
- Lindsey Wisham, BA, MPA
- Agency for Healthcare Research and Quality (AHRQ)
- Centers for Disease Control and Prevention (CDC)
- Centers for Medicare & Medicaid Services (CMS)

MAP Hospital Workgroup Staff Support Team

- Melissa Mariñelarena: Senior Director
- Kate McQueston: Project Manager
- Desmirra Quinnonez: Project Analyst
- **Project Email: MAPHospital@qualityforum.org**

MAP Clinician Workgroup Charge

MAP Clinician Workgroup provides input on measures to be implemented through the federal rulemaking process for the following programs:

- Merit-based Incentive Payment System (MIPS)
- Medicare Shared Savings Program (Accountable Care Organizations)

MAP Clinician Workgroup Members

- **Bruce Bagley, MD**
- **Amy Moyer**
- American Academy of Ophthalmology
- American Academy of Pediatrics
- American Association of Nurse Practitioners
- American College of Cardiology
- American College of Radiology
- Anthem
- Association of American Medical Colleges
- Carolina's HealthCare System
- Consumers' CHECKBOOK
- Council of Medical Specialty Societies
- Health Partners, Inc.
- National Center for Interprofessional Practice and Education
- Pacific Business Group on Health
- Patient-Centered Primary Care Collaborative
- Primary Care Information Project
- St. Louis Area Business Health Coalition
- Dale Shaller, MPA
- Michael Hasset, MD, MPH
- Eric Whitacre, MD, FACS
- Leslie Zun, MD
- Centers for Disease Control and Prevention (CDC)
- Centers for Medicare & Medicaid Services (CMS)
- Health Resources and Services Administration (HRSA)

MAP Clinician Workgroup

NQF Staff Support Team

- Reva Winkler: Senior Director
- Poonam Bal: Senior Project Manager
- **Project Email: MAPClinician@qualityforum.org**

MAP PAC/LTC Workgroup Charge

MAP PAC/LTC Workgroup provides input on measures to be implemented through the federal rulemaking process for the following programs:

- Nursing Home Quality Initiative
- Home Health Quality Reporting
- Inpatient Rehabilitation Facility Quality Reporting
- Long-Term Care Hospital Quality Reporting
- Hospice Quality Reporting

The 2016-2017 Pre-Rulemaking Process will pilot test a feedback loop process with the PAC/LTC Workgroup.

MAP Post Acute Care / Long Term Care (PAC/LTC) Workgroup Members

- **Gerri Lamb, PhD**
- **Debra Saliba, MD, MPH**
- Aetna
- AMDA – The Society for Post-Acute and Long-Term Care Medicine
- American Occupational Therapy Association
- American Physical Therapy Association
- Caregiver Action Network
- HealthSouth Corporation
- Johns Hopkins University School of Medicine
- Kindred Healthcare
- National Association of Area Agencies on Aging
- The National Consumer Voice for Quality Long-Term Care
- National Hospice and Palliative Care Organization
- National Partnership for Hospice Innovation
- National Pressure Ulcer Advisory Panel
- National Transitions of Care Coalition
- Visiting Nurses Association of America
- Constance Dahlin, MSN, ANP-BC, ACHPN, FPCN, FAAN
- Kim Elliott, PhD, CPH
- Caroline Fife, MD, CWS, FUHM
- Paul Mulhausen, MD, MHS
- Eugene Nuccio, PhD
- Thomas von Sternberg, MD
- Centers for Medicare & Medicaid Services (CMS)
- Office of the National Coordinator for Health Information Technology (ONC)
- Substance Abuse and Mental Health Services Administration (SAMHSA)

MAP Post Acute Care/ Long-Term Care Workgroup NQF Staff Support Team

- Sarah Sampsel: Senior Director
- Jean-Luc Tilly: Project Manager
- Mauricio Menendez: Project Analyst
- **Project Email: MAPPAC-LTC@qualityforum.org**

MAP Also Provides Guidance on Programs Not Subject to Rulemaking

- Current

- *Demonstrations to integrate care for dual eligible beneficiaries*
- *Medicaid Adult Core Set*
- *Medicaid/CHIP Child Core Set*

- Past

- *Health Insurance Exchange Quality Rating System*

- Potential for Future

- *Programs from the Centers for Medicare and Medicaid Innovation (CMMI)*
- *And others...*

Role of the Dual Eligible Beneficiaries Workgroup in Pre-Rulemaking

Cross-Program and Cross-Setting Measurement Considerations for Complex Consumers

- Medicare-Medicaid dual eligible beneficiaries access all types of healthcare, therefore their care is measured in all of the programs reviewed during pre-rulemaking
- Members of the Duals Workgroup participate in the setting-specific workgroups as non-voting liaisons to share their perspectives
- The Dual Eligible Beneficiaries Workgroup meets to consider cross-program and cross-setting measurement issues relevant to complex consumers (e.g., care transitions, person-centered care)

MAP Dual Eligible Beneficiaries Workgroup Charge

- Consider the range of measurement issues relevant to consumers with complex medical and social needs, such as
 - *Persistent gaps in available measures*
 - *Stratification and risk adjustment*
 - *Multiple chronic conditions*
 - *Shared accountability*
- Maintain a “family of measures” relevant to dual eligible beneficiaries to promote uptake and alignment of these measures across a variety of programs

MAP Dual Eligible Beneficiaries Workgroup Members

- **Jennie Chin Hansen, RN, MS, FAAN**
- **Nancy Hanrahan, PhD, RN, FAAN**
- AARP Public Policy Institute
- AMDA – The Society for Post-Acute and Long-Term Care Medicine
- American Occupational Therapy Association
- Association for Community Affiliated Health Plans
- Centene Corporation
- Consortium for Citizens with Disabilities
- Easter Seals
- Homewatch CareGivers
- iCare
- Medicare Rights Center
- National Association of Medicaid Directors
- National Association of Social Workers
- New Jersey Hospital Association
- SNP Alliance
- Alison Cuellar, PhD
- K. Charlie Lakin, PhD
- Ann Lawthers, ScD
- Pamela Parker, PhD
- Kimberly Rask, MD, PhD
- Administration for Community Living
- Centers for Medicare and Medicaid Services (CMS), Medicare-Medicaid Coordination Office
- Office of the Assistant Secretary for Planning and Evaluation

MAP Duals Eligible Beneficiaries Workgroup

NQF Staff Support Team

- Debjani Mukherjee: Senior Director
- Rachel Roiland: Senior Project Manager
- Kate Buchanan: Project Manager

Charge of the MAP Medicaid Adult and Child Task Forces

- Each year, the Medicaid Task Forces advise HHS on strengthening the Adult and Child Core Sets of measures by:
 - *Reviewing states' experiences voluntarily reporting measures*
 - *Refining previously identified measure gap areas and recommending potential measures for addition to the sets*
 - *Recommending measures for removal from the sets that are found to be ineffective*

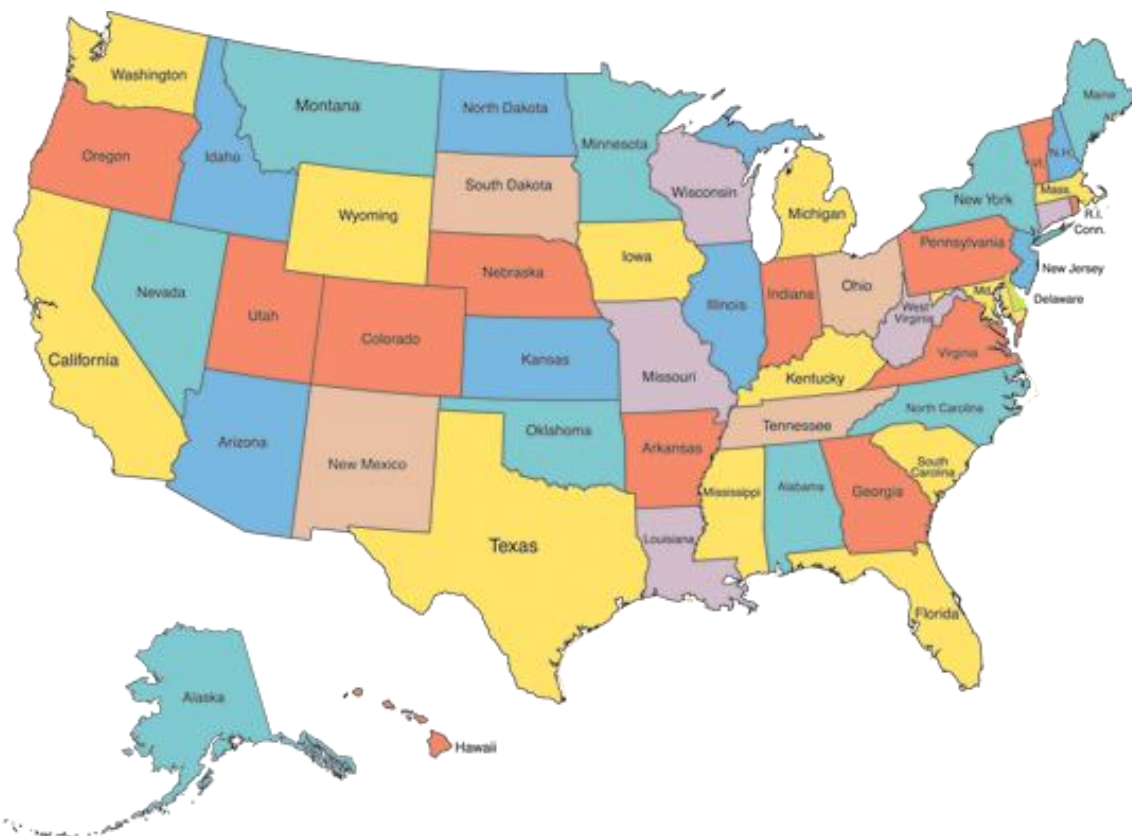
MAP Medicaid Adult Task Force

- **Harold Pincus, MD (chair)**
- Academy of Managed Care Pharmacy
- American Association of Nurse Practitioners
- American College of Physicians
- American Health Insurance Plans
- Association for Community Affiliated Health Plans
- Humana, Inc.
- March of Dimes
- National Association of Medicaid Directors
- National Rural Health Associates
- Ann Marie Sullivan, MD
- Kim Elliott
- Substance Abuse and Mental Health Services Administration (SAMHSA)

MAP Medicaid Child Task Force

- **Foster Gesten, MD, FACP (chair)**
- American Academy of Pediatrics
- American's Essential Hospitals
- American Nurses Association
- Association for Community Affiliated Plans
- Blue Cross and Blue Shield Association
- Children's Hospital Association
- Kaiser Permanente
- March of Dimes
- National Association of Medicaid Directors
- Patient-Centered Primary Care Collaborative
- Luther Clark, MD
- Richard Antonelli, MD
- National Partnership for Women and Families
- Agency of Healthcare Research and Quality
- Centers for Medicare & Medicaid Services
- Health Resources and Services Administration
- Office of the National Coordinator for Health IT

Medicaid Adult Core Set and Medicaid/CHIP Child Core Set



All states are voluntarily reporting measures for children enrolled in Medicaid/CHIP.

More than half of states are voluntarily reporting measures for adults. (The adult program is newer.)

MAP Medicaid Adult and Child Task Forces

NQF Staff Support Team

- Debjani Mukherjee: Senior Director
- Shaconna Gorham: Senior Project Manager
- Nadine Allen: Project Manager
- Miranda Kuwahara: Project Analyst

Approach to Pre-Rulemaking

MAP Pre-Rulemaking Approach

A closer look into how recommendations will be made

- The MAP Coordinating Committee will examine key strategic issues during their September 27th meeting to inform preliminary evaluations of measures under consideration;
- Each MAP workgroup will familiarize themselves with finalized program measure set for each program during the fall web-meetings and identify gaps in the current measure sets;
- The MAP workgroups will evaluate measures under consideration during their December in-person meetings informed by the preliminary evaluations completed by NQF staff;
- The MAP Coordinating Committee will examine the key cross issues identified by the MAP workgroups during their January 24-25th in-person meeting.

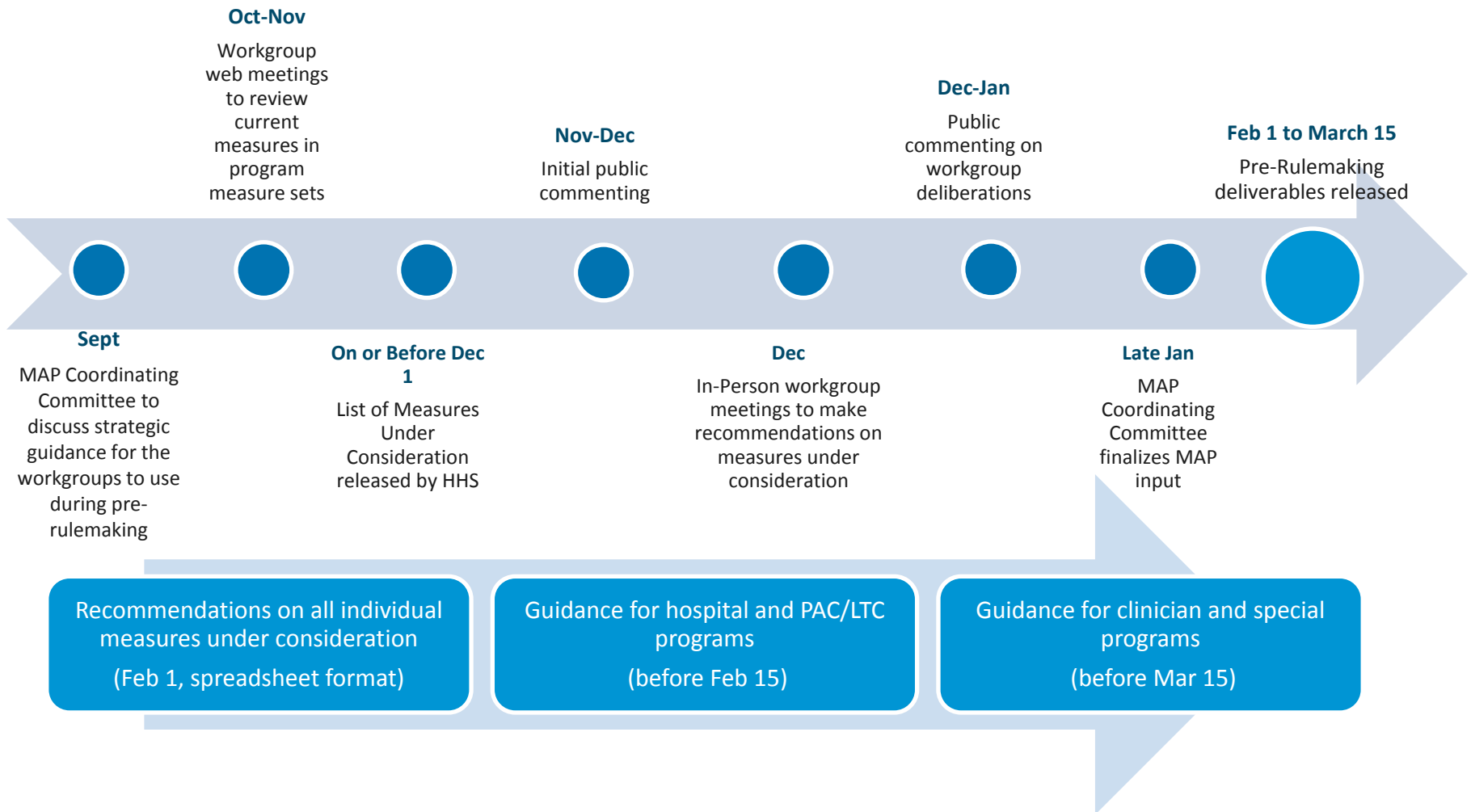
An advance look at what's coming up:

September 27th Coordinating Committee Meeting

- The Coordinating Committee will be meeting to review and revise the pre-rulemaking process including:
 - *Updating the MAP decision categories*
 - *Revising the preliminary analysis algorithm*
 - *Developing a feedback loop pilot*
- Discussion on these topics will assist MAP Workgroups and NQF staff apply the MAP preliminary analysis algorithm in their pre-rule making work

MAP Approach to Pre-Rulemaking

A look at what to expect



Q&A

Public and Member Comment

Next Steps: Upcoming Activities

Web Meetings

- Clinician Workgroup – October 17, 3-5pm ET
- Hospital Workgroup – October 18, 3-5pm ET
- PAC/LTC Workgroup – October 19, 3-5pm ET
- All MAP Pre-Rulemaking Process Review- November 16, 12-2pm ET
- Dual Eligible Beneficiaries Workgroup – **January 2017**
 - *Reviews recommendations from other groups and provide cross-cutting input during the second round of public comment*

In-Person Meetings

- Coordinating Committee- **September 27**
- Hospital Workgroup - **December 8-9**
- Clinician Workgroup - **December 12-13**
- PAC/LTC Workgroup - **December 14-15**
- Coordinating Committee- **January 24-25**