



**NATIONAL
QUALITY FORUM**

Driving measurable health
improvements together

<http://www.qualityforum.org>

Maternal Morbidity and Mortality Web Meeting 5

Nicole Williams

Tami Funk

Teresa Brown

Hannah Ingber

Maha Taylor

Sarah Rae Easter

September 10, 2020

Welcome

Agenda

- Welcome and Opening Remarks
- Meeting Objectives
- Roll Call
- Review of Public Comments Received
- Review and Discuss the Measurement Frameworks
- Opportunity for Public Comment
- Next Steps



Meeting Objectives

1. Review public comments on the Environmental Scan
2. Review composition of the two measurement frameworks
3. Determine the framework components (domains, subdomains, other influencing factors)

Standing Committee

- **Lekisha Daniel-Robinson, MSPH (Co-chair)**
- **Elizabeth Howell, MD, MPP (Co-chair)**
- **Timoria McQueen Saba (Co-chair)**
- Angela Anderson, CNM, DNP, FACNM
- Katherine Barrett, MPH
- Debra Bingham, DrPH, RN, FAAN
- Emily Briggs, MD, MPH, FAAFP
- Beth Ann Clayton, DNP, CRNA, FAAN
- Charlene Collier, MD, MPH, MHS
- Joia Crear-Perry, MD
- U. Michael Currie, MPH, MBA
- Eugene Declercq, PhD, MS, MBA
- Mary-Ann Etiebet, MD, MBA
- Dawn Godbolt, PhD, MS
- Kimberly Gregory, MD, MPH
- Kay Johnson, MPH, MEd
- Deborah Kilday, MSN
- Elliott Main, MD
- Claire Margerison, PhD, MPH
- Kate Menard, MD, PhD
- Katrina Nardini, CNM, WHNP-BC, MSN, MPH, FACNM
- LaQuandra Nesbitt, MD, MPH
- Nicole Purnell
- Diana Ramos, MD, MPH, FACOG
- Elizabeth Rochin, PhD, RN, NE-BC
- Rachel Ruel, MSW, CLC, Community Doula
- Amber Weiseth, DNP, MSN, RNC-OB
- Amanda Williams, MD, MPH
- Tiffany Willis, PsyD
- Susan Yendro, RN, MSN



Federal Liaisons

- **Girma Alemu, MD, MPH**
 - ▣ Health Resources and Services Administration
- **Wanda Barfield, MD, MPH, RADM USPHS**
 - ▣ Centers for Disease Control and Prevention
- **Renee E. Fox, MD**
 - ▣ Centers for Medicare & Medicaid Services
- **Erin Patton, MPH, CHES**
 - ▣ Centers for Medicare & Medicaid Services
- **Marsha R. Smith, MD, MPH, FAAP**
 - ▣ Centers for Medicare & Medicaid Services

Review of Public Comments Received

Public Comment Overview

- NQF utilizes public commenting in order to increase transparency of our reports and to encourage increased consensus building for all stakeholders
- Public commenting window: July 31 – August 20
- Received 30 comments from 4 organizations
- Prompts solicited feedback regarding the following report sections:
 - ▣ Defining Maternal Morbidity and Mortality
 - ▣ Influencing Risk Factors
 - ▣ Standard Processes for Maternal Care Delivery
 - ▣ Innovations in Measure Methodologies
 - ▣ Environmental Scan Findings
- Received comments via NQF public commenting tool and email

Definitions of Maternal Morbidity and Mortality

- Update terminology of the maternal death rate and the pregnancy-related mortality ratio
- Clarify source of definitions between CDC National Center for Health Statistics (NCHS) and the CDC Pregnancy Mortality Surveillance System (PMSS)
- Various suggestions to include additional examples and clinical aspects within disease subsections
- Expand patient-centered outcomes



Influencing Risk Factors

- Recommendation to add geography to acknowledge rurality within societal/community factors
- Recommendation to acknowledge implications of rural areas in addition to urban segregation within residential segregation
- Recommendations for further emphasis on racial inequality including:
 - ▣ Systemic racism
 - ▣ History of mistrust
 - ▣ Lack of accountability for health disparities
- Incorporation of additional/different sources for some risk factors



The following sections did not receive considerable feedback:

- Standard Processes for Maternal Care Delivery
- Innovations in Measure Methodologies

Committee Discussion

Frameworks



Requirements for Frameworks

- **Two separate** measurement frameworks: Morbidity and Mortality
- Measurement Aspects to include:
 - ▣ Prevalence and Incidence
 - ▣ Risk factors (medical and non-medical)
 - ▣ Measure concepts
 - ▣ Fully developed measures
 - ▣ Measures in use
 - ▣ Processes for maternal care delivery
 - ▣ Maternal health outcomes (e.g. postpartum readmissions, infections, injuries, and other pregnancy complications in addition to mortality)
 - ▣ Other factors/areas influencing outcomes
 - ▣ Health disparities



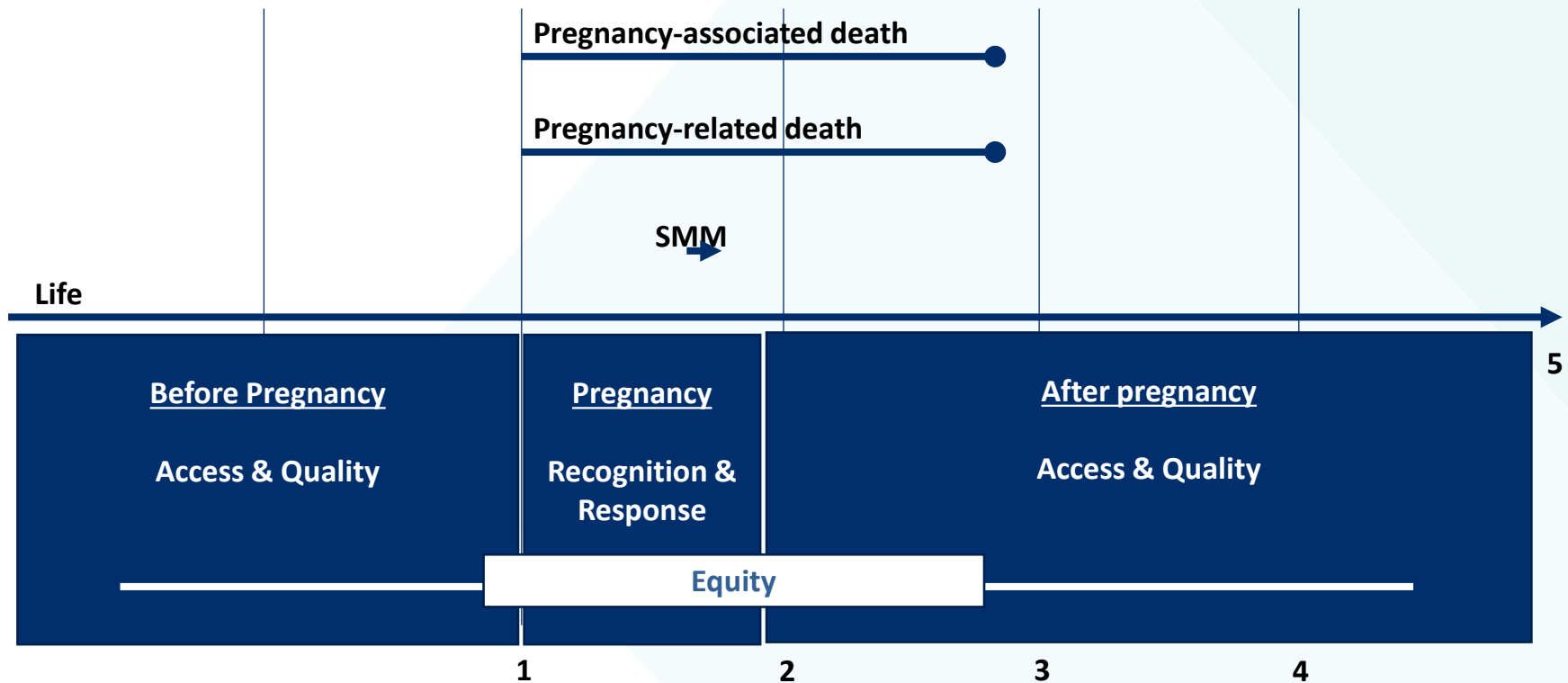
Recap of June 25th Committee Discussion

- Defining the framework. It is meant to identify the elements of care that lead to differences in quality.
- Drawing balance between the data that is available and the data that is desired to make a difference.
- What is important to measure? What else needs to be considered for improving quality and outcomes? What is the larger goal? And what needs to be measured to achieve that goal?
- Racism and Discrimination viewed to undergird the entire framework
- Measuring unequal treatment and understating it. Need measures that help hospitals and facilities measuring equity



CDC Framework

MMM Events/Outcomes: Time domains & subdomains





Framework Adapted from Dr. Elizabeth Howell

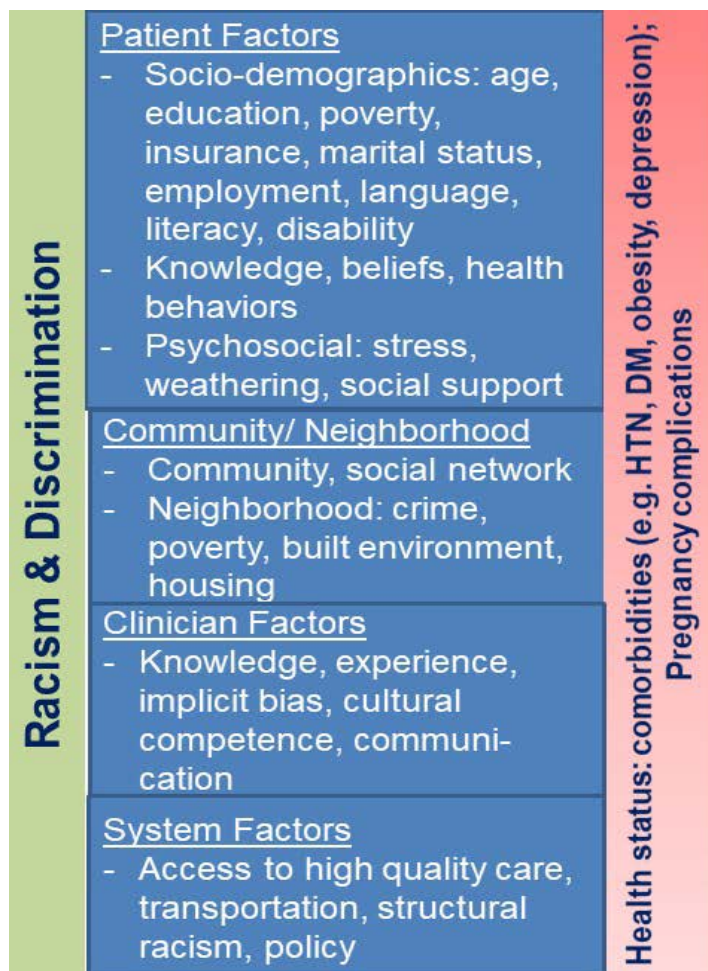
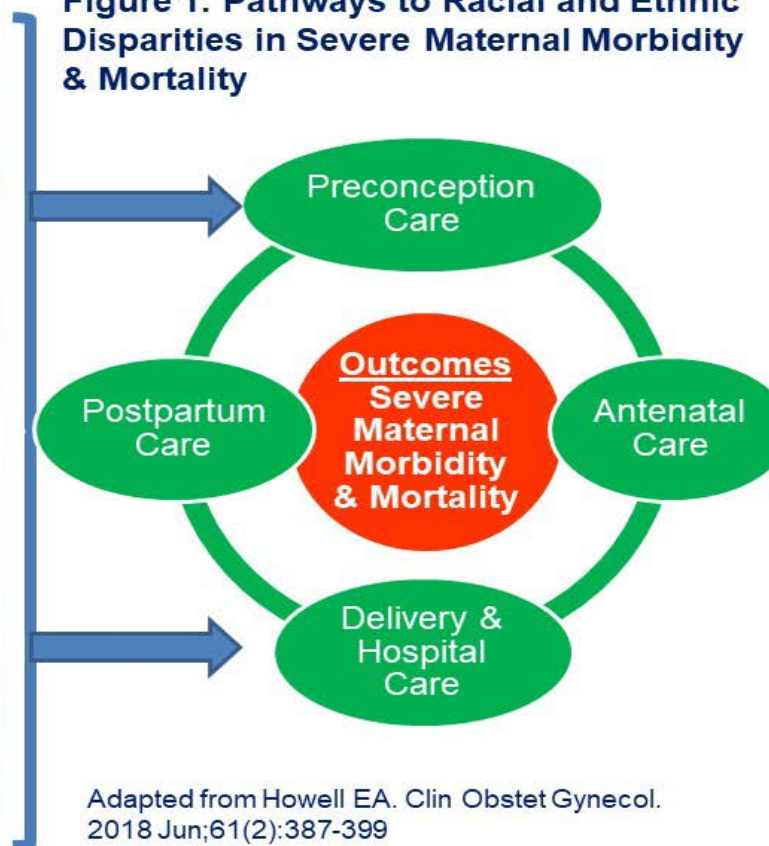


Figure 1: Pathways to Racial and Ethnic Disparities in Severe Maternal Morbidity & Mortality



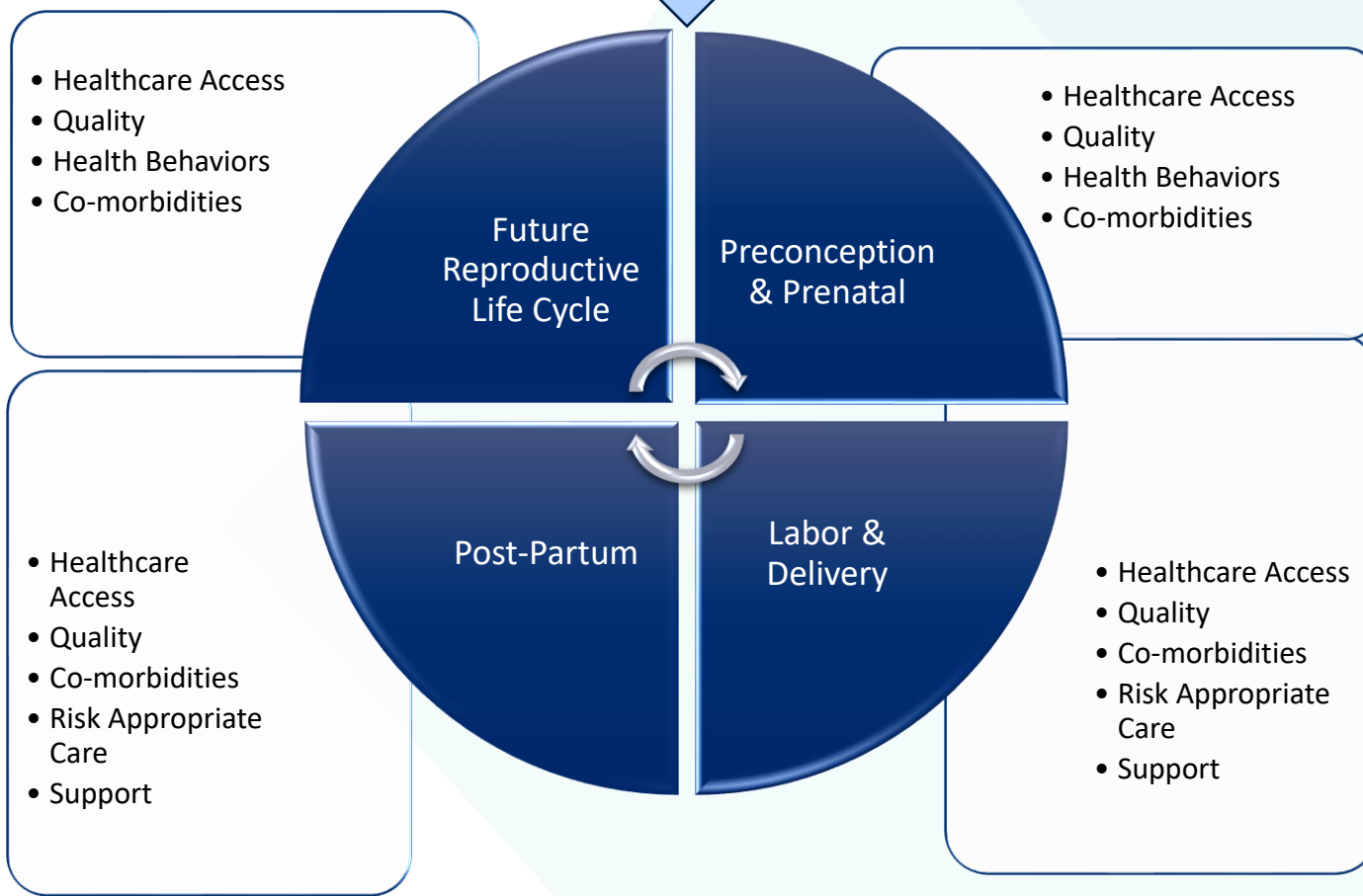
Adapted from Howell EA. Clin Obstet Gynecol. 2018 Jun;61(2):387-399

Morbidity Framework



Maternal Morbidity Measurement Framework

Health Equity – Racism – Discrimination – Mental Health – Person
Centered Care – Provider Education & Bias



Birth

Lifespan

Death

Morbidity Framework Domains & Subdomains

Domains

- Preconception & Prenatal
- Labor & Delivery
- Post-Partum
- Future Reproductive Life Cycle

Influencing Factors

- Health Equity
- Racism
- Discrimination
- Mental Health
- Person Centered Care
- Provider Education & Bias

Subdomains

- Healthcare Access
- Quality
- Health Behaviors
- Co-morbidities
 - Pregnancy-related
 - Pregnancy-associated
- Recognition
- Response
- Support



Discussion Questions

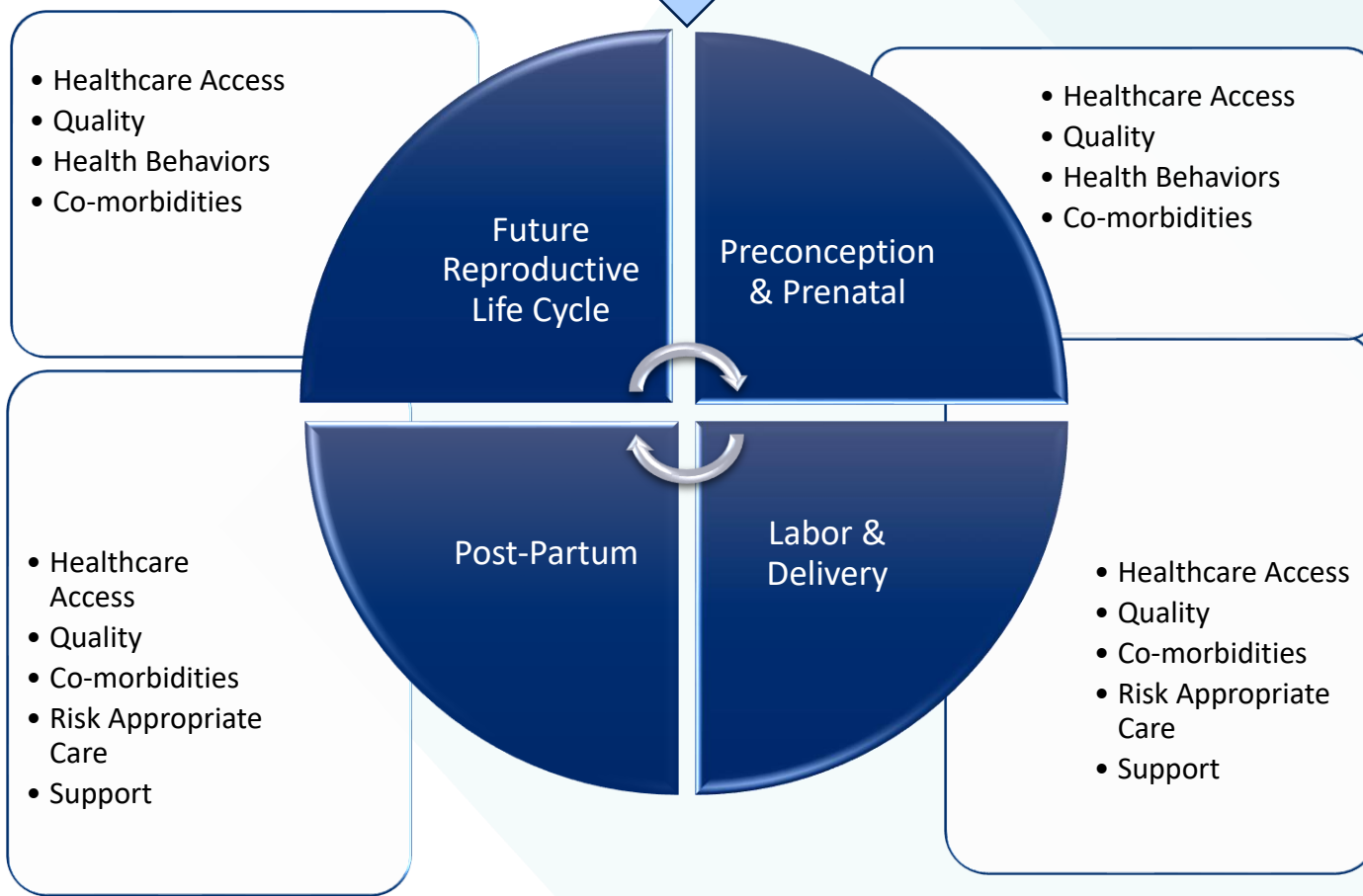
- Are these the right domains/groupings for measurement of **morbidity**? Anything missing?
- Are these the right subdomains/subgroups for each domain?
- Should there be any specific considerations related to **morbidity**?
- **Measurement Aspects to include:**
 - ▣ Prevalence and Incidence
 - ▣ Risk factors (medical and non-medical)
 - ▣ Measure concepts
 - ▣ Fully developed measures
 - ▣ Measures in use
 - ▣ Processes for maternal care delivery
 - ▣ Maternal health outcomes (e.g. postpartum readmissions, infections, injuries, and other pregnancy complications in addition to mortality)
 - ▣ Other factors/areas influencing outcomes
 - ▣ Health disparities

Mortality Framework



Maternal Mortality Measurement Framework

Health Equity – Racism – Discrimination – Mental Health – Person
Centered Care – Provider Education & Bias



Birth

Lifespan

Death

Mortality Framework – Domains & Subdomains

Domains

- Preconception & Prenatal
- Labor & Delivery
- Post-Partum
- Future Reproductive Life Cycle

Influencing Factors

- Health Equity
- Racism
- Discrimination
- Mental Health
- Person Centered Care
- Provider Education & Bias

Subdomains

- Healthcare Access
- Quality
- Health Behaviors
- Co-morbidities
 - Pregnancy-related
 - Pregnancy-associated
- Recognition
- Response
- Support

Discussion Questions

- Are these the right domains/groupings for measurement of **mortality**? Anything missing?
- Are these the right subdomains/subgroups for each domain?
- Should there be any specific considerations related to **mortality**?
- **Measurement Aspects to include:**
 - ▣ Prevalence and Incidence
 - ▣ Risk factors (medical and non-medical)
 - ▣ Measure concepts
 - ▣ Fully developed measures
 - ▣ Measures in use
 - ▣ Processes for maternal care delivery
 - ▣ Maternal health outcomes (e.g. postpartum readmissions, infections, injuries, and other pregnancy complications in addition to mortality)
 - ▣ Other factors/areas influencing outcomes
 - ▣ Health disparities

Opportunity for Public Comment

Next Steps

Next Steps - Recommendations Report

Recommendations Report Requirements:

- Report shall consider and include applicable information from the Environmental Scan
- Report shall detail Measurement Frameworks
- Recommendations for **actionable approaches to improve maternal morbidity and mortality measurement** across various healthcare settings, systems and stakeholders
- Recommendations for **short-term** (1 – 4 yrs.) and **long-term** (5+ yrs.) **approaches** to identify how measurement can enhance current maternal health outcomes and provide for the reduction of adverse maternal events
- Recommendation for an **actionable measure concept for maternal mortality**
 - ▣ Describe how measure can be used across disparate state systems
 - ▣ Include proposed clinical and social-risk adjustment plan for comparisons

Next Steps – Recommendations Report

Deliverable	Due Date
Recommendations Report on Maternal Morbidity and Mortality measurement - Draft 1	February 18, 2021
Recommendations Report on Maternal Morbidity and Mortality measurement - Draft 2	March 18, 2021
30-day Comment period on Recommendations Report on Maternal Morbidity and Mortality measurement	April 6 – May 5, 2021
Final Recommendations Report	August 13, 2021

Next Steps – Web Meetings

Meeting	Topic	Date
Web Meeting 6:	Continued guidance on measurement frameworks	November 16, 2020
Web Meeting 7:	Finalize frameworks and report	January 26, 2021
Web Meeting 8:	Post-Comment Call and Project Wrap Up	May 26, 2021

THANK YOU.

NATIONAL QUALITY FORUM

<http://www.qualityforum.org>