

Welcome and Housekeeping Reminders

- Please mute your audio when not speaking
- Please ensure your name is displayed correctly
- Please turn on video, especially during discussions
- Please use 'Raise Hand' if you wish to speak (click 'Participants' icon, then click 'Raise Hand' next to your name once visible)
- Please use the chat feature to communicate with the NQF Host
- We encourage you to contribute comments via the chat, and we do save/review the chat after every meeting.

If you are experiencing technical issues, please contact us at

propmroadmap@qualityforum.org



**NATIONAL
QUALITY FORUM**

Driving measurable health
improvements together

<http://www.qualityforum.org>

Building a Roadmap from Patient-Reported Outcome Measures to Patient-Reported Outcome Performance Measures

Second Year, *Web Meeting #1*

January 28, 2022

This project is funded by the Centers for Medicare & Medicaid Services under contract HHSM-500-2017-00060I – 75FCMC20F0003 Building a Roadmap from Patient-Reported Outcome Measures to Patient-Reported Outcome Performance Measures.

Welcoming Remarks

NQF Welcome



Kathleen Giblin

Senior VP, Emerging Initiatives and Program Operations

Co-Chair Welcome

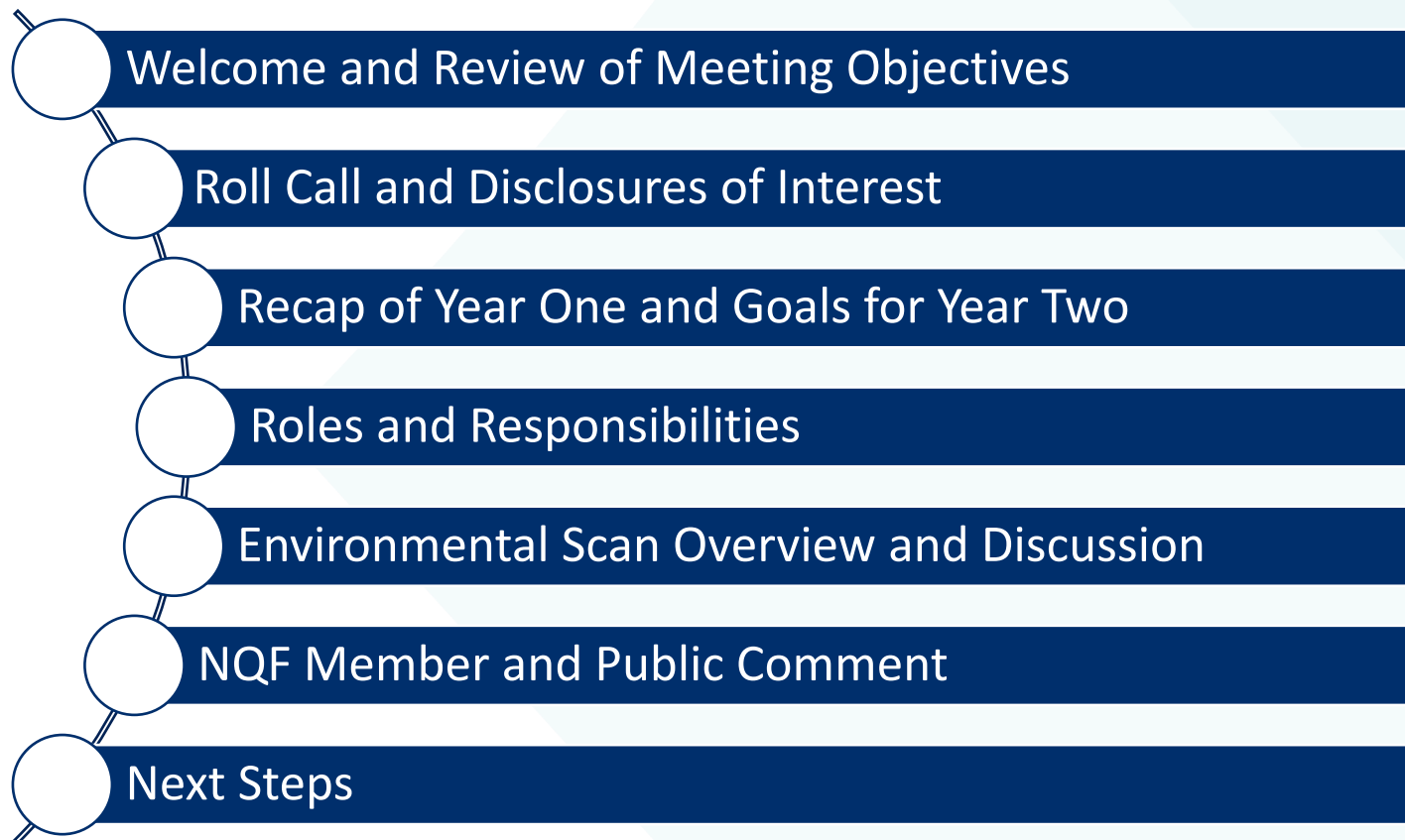


Cathy MacLean, MD, PhD, Chief Value Medical Officer, Hospital for Special Surgery



Sam Simon, PhD, Senior Director, Mathematica

Agenda



Meeting Objectives

- Orient the TEP to the scope and objectives of the second year of the project
- Publicly share Disclosures of Interest from TEP members
- Discuss Environmental Scan updates and obtain additional input and sources of information to supplement initial results

Roll Call and Disclosures of Interest

NQF Staff

NQF Staff Member

Maha Taylor, MHA, PMP, Managing Director

Chuck Amos, MBA, Senior Director

Teresa Brown, MHA, MA, CPHQ, CPPS, Senior Manager

Deidra Smith, MBA, PMP, Senior Project Manager

Evelyn Thomas, MPH, CHES, Senior Analyst

Zoe Waller, Coordinator

Technical Expert Panel (TEP) Members

TEP Member Name/Credentials	TEP Member Name/Credentials
Catherine MacLean, MD, PhD (<i>co-chair</i>)	Sam Simon, PhD (<i>co-chair</i>)
Katherine Ast, MSW, LCSW	Laura Jantos, LFHIMSS
Rachel Brodie, BA	Kirk Munsch
Zahid Butt, MD, FACG	Deborah Paone, DrPH, MHA
Collette Cole, BSN, RN, CPHQ	Brenna Rabel, MPH
Mark Friedberg, MD, MPP	Nan Rothrock, PhD, MA
Debbie Gipson, MD, MS	Mike Sacca, AS
Ben Hamlin, MPH	Rachel Sisodia, MD
Janel Hanmer, MD, PhD	John Spertus, MD, MPH, FACC, FAHA
Helen Haskell, MA	Ruth Wetta, PhD, MSN, MPH, RN
Brian Hurley, MD, MBA, DFASAM	Albert Wu, MD, MPH, FACP
Christine Izui, MS	*

Federal Liaisons and Affiliation

Federal Liaison Name/Credentials	Federal Agency
Girma Alemu, MD, MPH	HRSA
Joel Andress	CMS/CCSQ
David Au, MD, MS	VA
LaWanda Green Burwell, ScD (COR)	CMS/CCSQ
Kyle Cobb	DHHS/ONC/OTTECH
Janis Grady, RHIT, FAC-COR III	CMS/CCSQ-QMVIC/DQM
Rhona Limcangco, PhD	AHRQ
Meghan McHugh, PhD, MPH	SAMHSA/CBHSQ
Sandra Mitchell	NIH/NCI
Ashley Wilder Smith, PhD, MPH	NIH/NCI
Clifford A. Smith, PhD, ABPP-Cn	VA

Recap of Year One and Goals for Year Two

Project Purpose

- This Task Order aims to identify the attributes of high quality patient-reported outcome measures (PROMs) and create a step-by-step guidance for developing digital patient-reported outcome performance measures (PRO-PMs) that can be used in CMS value-based purchasing (VBP) programs and Alternative Payment Models (APMs).
- The second-year work builds on the first year by engaging measure developers to provide improvement opportunities for the Technical Guidance Report through a series of key informant interviews.
- Year 2 will focus primarily on **digital** PRO-PMs.

Terminology

Concept	Definition	Example
Patient-Reported Outcome (PRO)	What gets measured. The status of a patient's health condition or health behavior that comes directly from the patient (i.e., outcome data)	Symptom: depression
Patient-Reported Outcome Measure (PROM)	How PROs are measured. The tools/instruments used to collect data	Patient Health Questionnaire 9 (PHQ-9) [®] , a standardized tool to assess depression
Patient-Reported Outcome Performance Measure (PRO-PM)	How PROs are calculated. A way to aggregate the information from patients into a reliable, valid measure of performance	Percentage of patients with a diagnosis of major depression or dysthymia and an initial PHQ-9 score >9 with a follow-up PHQ-9 score <5 at 6 months (NQF #0711)

CMS. *Supplemental Materials to MMS Blueprint: Patient Reported Outcome Measures.*; 2021:6.
<https://www.cms.gov/files/document/blueprint-patient-reported-outcome-measures.pdf>.

Deliverables (Initial Year)

- **Environmental Scan Report:** current-state of high-quality PROMs and digital PRO-PMs for CMS regulatory purposes
- **Interim Report:** attributes of high-quality PROMs, including those in CMS Value-Based Purchasing (VBP) programs, Alternative Payment Models (APMs), or coverage determination
- **Technical Guidance:** step-by-step roadmap for using PROMs to develop digital PRO-PMs that meet NQF endorsement criteria

NQF's Approach

- **Re-convene the multi-stakeholder TEP** that represents diverse perspectives—including patients, clinicians, measure developers, and health IT specialists—on PROMs and PRO-PMs
- **Re-convene the federal liaisons** from diverse federal agencies who can speak to the agencies' use of PROMs and PRO-PMs
- **Host six 90-minute web meetings** where the TEP discusses pertinent topics and provides guidance
- **Facilitate supplemental means of gathering information**, including surveys, key informant interviews, and focus groups
- **Develop reports and recommendations**

TEP Web Meetings

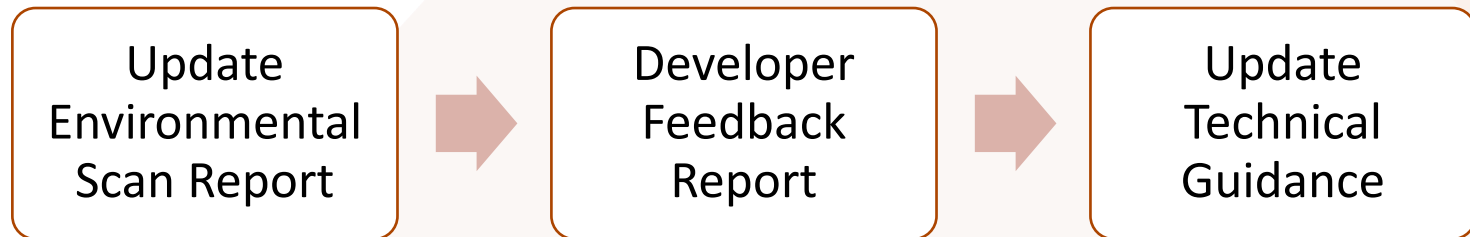
Web Meeting	Scope
Web Meeting 1	Orientation and overview of OY1 Scope; Initial Discussion on the Developer Feedback Report
Web Meeting 2	Environmental Scan Update Discussion
Web Meeting 3	Address Public Comments Received on Updated Environmental Scan Report
Web Meeting 4	Address Public Comments Received on Developer Feedback Report
Web Meeting 5	Technical Guidance Update Discussion
Web Meeting 6	Address Public Comments Received on Updated Technical Guidance Report

Key Deliverables (Second Year)

- **Update Environmental Scan Report:** current-state of high-quality PROMs and digital PRO-PMs for CMS regulatory purposes; primary focus for updates will be the current-state of digital measurement
- **Developer Feedback Report:** discussion of user experience with the Technical Guidance and suggestions for new topics to be included in an updated version of the guidance
- **Update Technical Guidance:** revised version of the Technical Guidance Report, or *Roadmap*; key changes will be based on recommendations from measure developers and expanded information on digital measure development

Report Stages

- Each report follows a development lifecycle that allows input from different expert perspectives



Roles and Responsibilities

Ground Rules



No rank in the
room



Stay respectful and
engaged



Participate



Refrain from
political comments



Share your
experiences



Learn from others

Roles and Responsibilities of the TEP

- Serve as experts working with NQF staff to achieve the project goals
- Review meeting materials in advance and engage in six, 90-minute web meetings during 2022
- Steer development of project deliverables by reviewing drafts and providing guidance
- Participate in supplemental information gathering activities as needed, e.g., surveys, key informant interviews, respond to email requests in a timely manner
- Respond to public comments submitted during the review period
- Provide additional feedback and input as needed

Providing Input

- **How to provide input during the web meetings?** Provide timely input on major deliverables during facilitated discussion in the TEP meetings, either verbally to the TEP or via the chat box
- **How to provide input outside of the meetings?**
 - ▣ Submit requested input via offline survey questions (as applicable)
 - ▣ Provide written comments on draft deliverables during TEP review
 - ▣ Participate in interviews and/or focus groups (as applicable)
 - ▣ Submit additional input on major deliverables through the project inbox (propmroadmap@qualityforum.org)

Roles of the Co-Chairs

- Group leaders and facilitators of the TEP
- Assist in facilitating TEP meetings by driving the TEP to consensus on technical guidance and outlining potential path forward for areas where consensus cannot be reached
- Keep the TEP focused and on track to meet project goals without hindering critical discussion/input
- Assist NQF staff in identifying key issues for TEP discussion

Roles of the Federal Liaisons

- Attend and listen to web meetings
- Serve as a resource to supplement TEP discussions
- Provide input on important topics such as practical consideration of data needs, ongoing challenges that federal programs face, etc.
- Provide factual reviews and evaluations of project deliverables
- Provide perspective of current- and future-state PROM and PRO-PM needs at the federal level

Roles of the NQF Staff

- Serve as a neutral convener of multistakeholder representatives
- Work with the TEP to facilitate consensus development and to achieve project goals
- Organize meetings and conference calls
- Ensure communication among all project participants
- Facilitate necessary communication and collaboration between different NQF projects and external stakeholders
- Respond to NQF member and public queries about the project
- Maintain documentation of project activities
- Draft and edit reports and project materials for public commenting
- Publish final project reports

Roles of CMS

- Project funder under HHSM-500-2017-00060I – 75FCMC20F0003 Building a Roadmap from Patient-Reported Outcome Measures to Patient-Reported Outcome Performance Measures. The funding source is Social Security Act Section 1890(b)(7)(C)-(D).
- Provide input and feedback on project deliverables for completeness and accuracy
- Coordinate federal agencies' engagement
- Work with the NQF staff to forecast potential risks and create risk mitigation strategies
- CMS respects the independence of the NQF consensus development process and the TEP

Environmental Scan Overview and Discussion

Revisit Web Meeting 8

- Reviewed key suggestions and overarching themes from public comments, TEP feedback, and NQF review
- Addressed remaining TEP questions about the Technical Guidance report

Key Themes

- Balancing high-level guidance with detailed information
- Critical points for stakeholder advisory engagement
- “Building a plane while flying it” - limited information regarding digital PRO-PMs currently exists
- Providing guidance on a good future state of digital measurement would be beneficial and will be the focus of this year’s work

Discussion: TEP Recommendations

- When considering the TEP's work during 2021:
 - ▣ Which sections of the Scan require significant revision?
 - ▣ Which sections of the Scan should be removed?
 - ▣ What is contradictory or redundant with the Interim Report or Technical Guidance Report?
 - ▣ What do you recommend adding to the Scan?

Discussion: Digital Measurement

- Considering the TEP discussion during Web Meeting 8 last fall, what information on digital measurement generally—and digital PRO-PMs specifically—should be added to the Environmental Scan?
 - ▣ The goal is to represent the current state of digital measurement
 - ▣ What resources should be referenced for the scan?
 - » From your organization or federal agency?
 - » From peer-reviewed literature?
 - » Grey literature or white papers?
- If you have anecdotal information that you are willing to share for consideration in the Report, please contact PROPMRoadmap@qualityforum.org

NQF Member and Public Comment

Next Steps

Upcoming Web Meeting

- Web Meeting #2: Date to be scheduled
 - ▣ Continued discussion of update on Environmental Scan Report

Project Contact Information



Email: propmroadmap@qualityforum.org



NQF phone: (202)783-1300



Project page:

[Building a Roadmap from Patient-Reported Outcome Measures to Patient-Reported Outcome Performance Measures](#)



SharePoint site:

[PRO-PM Roadmap SharePoint Home Page](#)

THANK YOU.

NATIONAL QUALITY FORUM

<http://www.qualityforum.org>