

Welcome and Housekeeping Reminders

- Please mute your audio when not speaking
- Please ensure your name is displayed correctly (right click on your picture and select "Rename" to edit)
- Please turn on video, especially during discussions
- Modify your display by toggling the view in upper-right corner
- Please use the 'Raise Hand' if you wish to speak (click 'Participants' icon, then click 'Raise Hand' at the bottom of the participant list)
- Please use the chat feature to communicate with the NQF Host

If you are experiencing technical issues, please contact us at
propmroadmap@qualityforum.org



**NATIONAL
QUALITY FORUM**

Driving measurable health
improvements together

Building a Roadmap from Patient-Reported Outcome Measures to Patient-Reported Outcome Performance Measures

Web Meeting #2

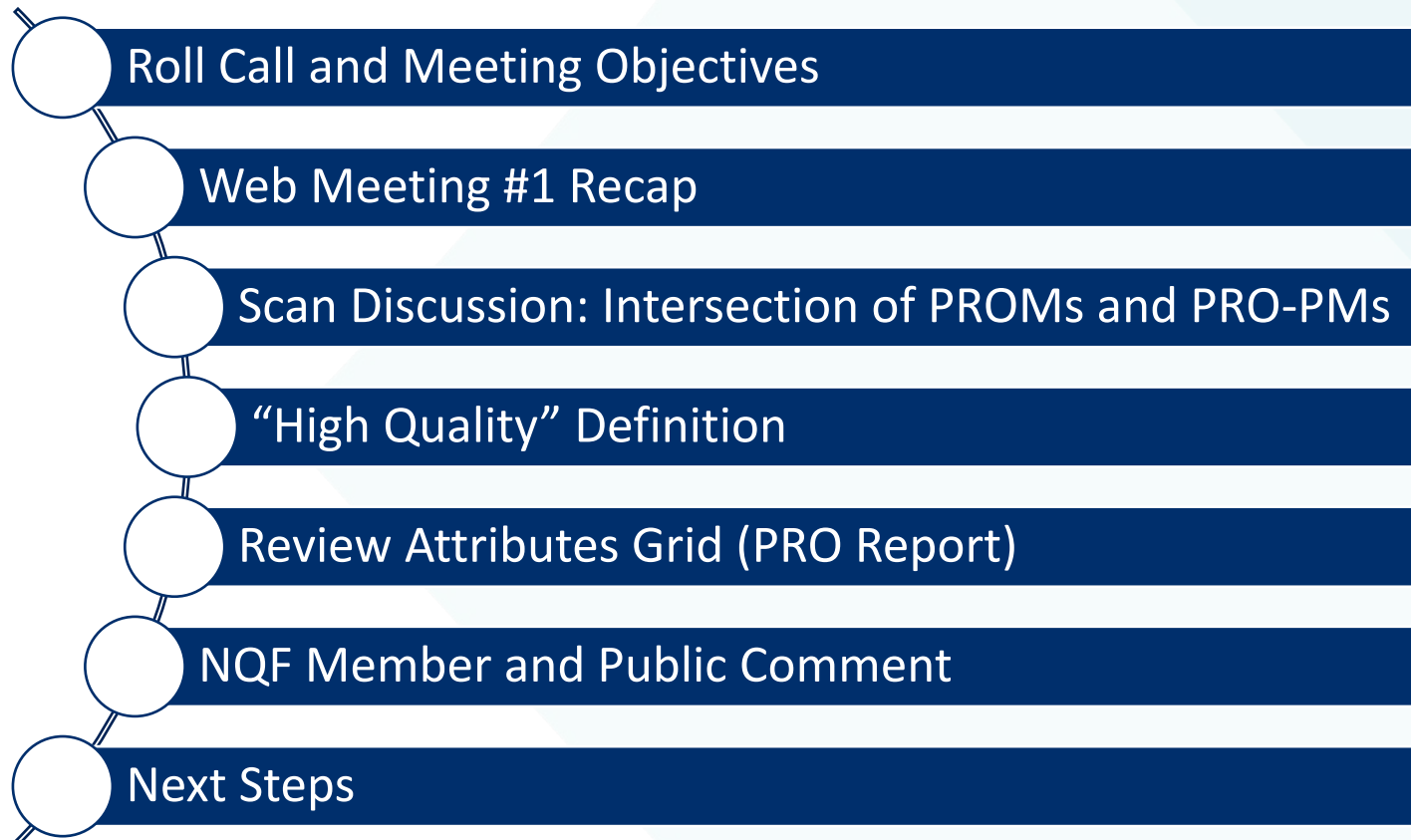
February 26, 2021

This project is funded by the Centers for Medicare & Medicaid Services under contract HHSM-500-2017-00060I – 75FCMC20F0003 Building a Roadmap from Patient-Reported Outcome Measures to Patient-Reported Outcome-Performance Measures.

Welcome



Agenda



Roll Call and Meeting Objectives



NQF Staff

NQF Staff Member

Chuck Amos, MBA, Director

Beijier Edwards, MBA, PMP, Project Manager

Teresa Brown, MHA, MA, CPHQ, CPPS, Senior Manager

Juanita Rogers, MS, CHES, Analyst

Technical Expert Panel (TEP) Members

TEP Member Name/Credentials	TEP Member Name/Credentials
Catherine MacLean, MD, PhD (<i>co-chair</i>)	Sam Simon, PhD (<i>co-chair</i>)
David Andrews, PhD	Christine Izui, MS
Katherine Ast, MSW, LCSW	Laura Jantos, LFHIMSS
Rachel Brodie, BA	Kirk Munsch
Zahid Butt, MD, FACP	Deborah Paone, DrPH, MHA
Collette Cole, BSN, RN, CPHQ	Brenna Rabel, MPH
Paula Farrell, BSN, RN, CPHQ, LSSGB	Nan Rothrock, PhD, MA
Mark Friedberg, MD, MPP	Mike Sacca, AS
Debbie Gipson, MD, MS	Rachel Sisodia, MD
Ben Hamlin, MPH	John Spertus, MD, MPH, FACC, FAHA
Janel Hanmer, MD, PhD	Ruth Wetta, PhD, MSN, MPH, RN
Helen Haskell, MA	Albert Wu, MD, MPH, FACP
Brian Hurley, MD, MBA, DFASAM	

Federal Liaisons and Affiliation

Federal Liaison Name/Credentials	Federal Agency
Girma Alemu, MD, MPH	HRSA
Joel Andress	CMS/CCSQ
David Au, MD, MS	VA
Kyle Cobb	DHHS/ONC/OTTECH
Janis Grady, RHIT, FAC-COR III	CMS/CCSQ-QMVIG/DQM
Rhona Limcangco, PhD	AHRQ
Meghan McHugh, PhD, MPH	SAMHSA/CBHSQ
Sandra Mitchell	NIH/NCI
Ashley Wilder Smith, PhD, MPH	NIH/NCI
Clifford A. Smith, PhD, ABPP-Cn	VA

Meeting Objectives

- Continue discussion on the Environmental Scan and the intersection where PROMs and Performance Measures meet, including
 - ▣ Advantages of basing a PRO-PM based on single PROM vs. multiple PROMs
 - ▣ Interoperability
 - ▣ Anchors
 - ▣ Other considerations
- Review survey results related to defining “high quality” PROMs
- Discuss the Attribute Grid from the *PRO Best Practices* report through the lens of performance measurement

Ground Rules



No rank in the room



Stay respectful and engaged



Participate



Refrain from political comments



Share your experiences



Learn from others

Web Meeting #1 Recap

Web Meeting #1 Recap

- Covered orientation to the TEP and project
- Presented environmental scan results
- Discussed environmental scan topics
 - ▣ Identifying Candidate PROMs for performance measures
 - ▣ PRO-PM development challenges
- Introduced the “high quality” definition for PROMs for performance measures

Definition of “High Quality” PROMs for Use in Developing Performance Measures

Background: Emerging Themes from TEP Survey

- Strawman definition of “high quality” PROM for performance measurement
 - ▣ Acknowledge patient importance
 - ▣ Include psychometric soundness
 - ▣ Go above and beyond reliable, valid, feasible, low burden, low/no cost
 - ▣ Tested and reliable in real-world settings with different collection modes
 - ▣ Add readily interpretable and actionable
 - ▣ Incorporate quality of PRO-PMs, emphasize the intersection
- Should we restate as “high utility” or “trustworthy”?

Background: Attribute Grid

[screenshare]



Discussion: Attribute Grid

- Through the lens of performance measures, what is missing from the Attribute Grid?
- What in the Attribute Grid is applicable to this initiative? Which are essential to this work?

Environmental Scan Discussion



Environmental Scan Public Comments

- Public comments are open
- TEP members and Federal Liaisons invited to submit comments

Environmental Scan: Three-Pronged Approach

Focuses of the scan:

- Current-state assessment of where the industry stands with regards to identifying high quality PROMs as the basis for digital PRO-PMs for VBP programs, APMs, and Medicare coverage determinations
- Identify current and existing guidance on best practices for developing PRO-PMs

Literature review

VBP and APM
program review

NQF endorsement
review of PRO-PMs



Background: Intersection of PROMs and Performance Measures

- PROMs to PRO-PM relationship – Many to 1 vs 1 to 1
 - ▣ Logistical challenges
 - ▣ Standard practice
 - ▣ Publicly available crosswalks
 - ▣ Cut points or pass score
 - ▣ Licensing costs
 - ▣ Burden – response rates
 - ▣ Interoperability
- Importance to patients
- Focus on outcome measures, not experience domains
- Utility to clinicians
- Collection/completion burden

Background: Intersection of PROMs and Performance Measures Continued

	Many to 1	1 to 1
Quality standard	Same for all measures Would need PROM crosswalks or standard anchors	Can be different across measures
Interface with care	Allows providers to use established PROM	Could necessitate change in PROM used or addition of another PROM
Administration	Fewer measures to develop and maintain	More measures to develop and maintain
Licensing costs	Choice between proprietary and public instruments	Could require proprietary instrument



Discussion: Intersection of PROMs and Performance Measures

- How does a 1:1 relationship vs. a ∞ :1 relationship differ when developing PROMs and performance measures?
- How do scores and cut points influence selection of candidate PROMs for performance measures?
- Where is actionability prioritized in the selection of PROMs?
- How do anchors influence the relationship between PROMs and performance measures?

Key Considerations at Intersection of PROs and Performance Measures

- Definition of quality standard
 - ▣ Threshold (e.g., PASS) vs
 - ▣ Change score (e.g., MCID, SCB)
 - ▣ Combination
- Collection/completion burden

Threshold	Change Score	Combination
Requires collection at only one time point	Requires multiple collection points	Requires multiple collection points



Call for Literature and Anecdotes

- Please continue to share any published literature (peer-reviewed or grey literature) that helps expand on today's discussion
- If you have anecdotal information that you are willing to share for consideration, please contact PROPMRoadmap@qualityforum.org

NQF Member and Public Comment

Next Steps



Upcoming Web Meeting and Public Comment

- Draft #2 of the Environmental Scan Report will be posted for public comment from February 24 through March 16, 2021
- Web Meeting #3: March 25, 2021, 3:00 – 4:30 pm ET

Project Contact Information



Email: propmroadmap@qualityforum.org



NQF phone: (202)783-1300



Project page:

[Building a Roadmap from Patient-Reported Outcome Measures to Patient-Reported Outcome Performance Measures](#)



SharePoint site:

[PRO-PM Roadmap SharePoint Home Page](#)

THANK YOU.

NATIONAL QUALITY FORUM