

# Welcome and Housekeeping Reminders

- Please mute your audio when not speaking
- Please ensure your name is displayed correctly
- Please turn on video, especially during discussions
- Please use 'Raise Hand' if you wish to speak (click 'Participants' icon, then click 'Raise Hand' next to your name once visible)
- Please use the chat feature to communicate with the NQF Host
- We encourage you to contribute comments via the chat, and we do save/review the chat after every meeting.

If you are experiencing technical issues, please contact us at

[propmroadmap@qualityforum.org](mailto:propmroadmap@qualityforum.org)



**NATIONAL  
QUALITY FORUM**

Driving measurable health  
improvements together

<http://www.qualityforum.org>

# Building a Roadmap from Patient-Reported Outcome Measures to Patient-Reported Outcome Performance Measures

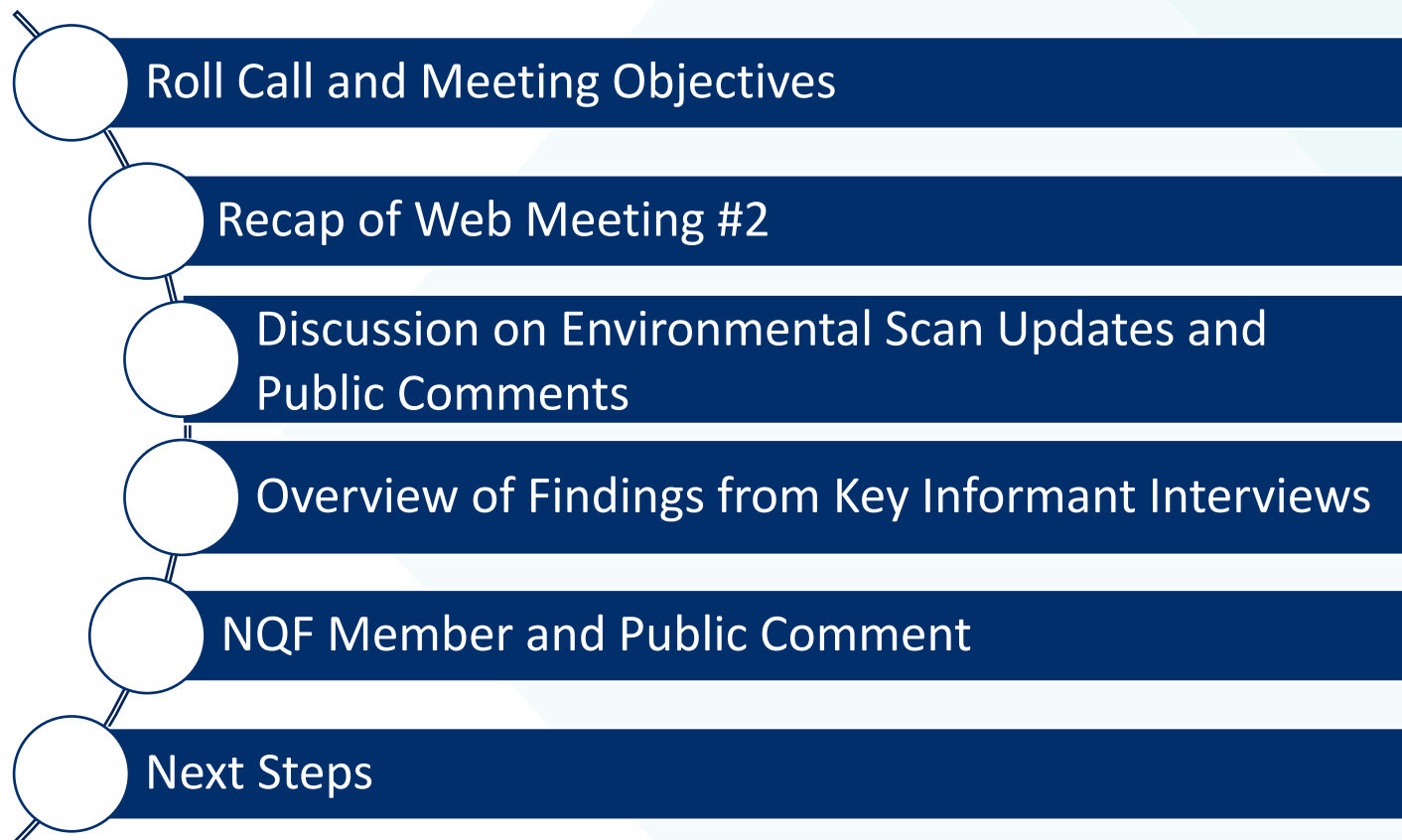
## Second Year, *Web Meeting #3*

May 16, 2022

*This project is funded by the Centers for Medicare & Medicaid Services under contract HHSM-500-2017-00060I – 75FCMC20F0003 Building a Roadmap from Patient-Reported Outcome Measures to Patient-Reported Outcome Performance Measures.*

# Welcome and Meeting Objectives

# Agenda



## Meeting Objectives

- Discuss Environmental Scan updates and public comments to elicit guidance on necessary revisions for Draft 3 of the report
- Review findings from Key Informant Interviews and begin to discuss revisions to the Technical Guidance Report

# Roll Call

## NQF Staff

---

### **NQF Staff Member**

---

**Allie Herr, MPH, Managing Director**

**Chuck Amos, MBA, Senior Director**

**Teresa Brown, MHA, MA, CPHQ, CPPS, Director**

**Deidra Smith, MBA, PMP, Senior Project Manager**

**Evelyn Thomas, MPH, CHES, Specialist**

**Zoe Waller, Coordinator**

---

## Technical Expert Panel (TEP) Members

TEP Member Name/Credentials	TEP Member Name/Credentials
Catherine MacLean, MD, PhD ( <i>co-chair</i> )	Sam Simon, PhD ( <i>co-chair</i> )
Katherine Ast, MSW, LCSW	Christine Izui, MS
Rachel Brodie, BA	Laura Jantos, LFHIMSS
Zahid Butt, MD, FACG	Kirk Munsch
Collette Cole, BSN, RN, CPHQ	Deborah Paone, DrPH, MHA
Mark Friedberg, MD, MPP	Brenna Rabel, MPH
Debbie Gipson, MD, MS	Nan Rothrock, PhD, MA
Ben Hamlin, DrPH	Mike Sacca, AS
Janel Hanmer, MD, PhD	John Spertus, MD, MPH, FACC, FAHA
Helen Haskell, MA	Ruth Wetta, PhD, MSN, MPH, RN
Brian Hurley, MD, MBA, DFASAM	Albert Wu, MD, MPH, FACP



## Federal Liaisons and Affiliation

Federal Liaison Name/Credentials	Federal Agency
Girma Alemu, MD, MPH	HRSA
Joel Andress	CMS/CCSQ
David Au, MD, MS	VA
LaWanda Green Burwell, ScD (COR)	CMS/CCSQ
Kyle Cobb	DHHS/ONC/OTTECH
Janis Grady, RHIT, FAC-COR III	CMS/CCSQ-QMVIC/DQM
Rhona Limcangco, PhD	AHRQ
Meghan McHugh, PhD, MPH	SAMHSA/CBHSQ
Sandra Mitchell, PhD, CRNP, FAAN	NIH/NCI
Ashley Wilder Smith, PhD, MPH	NIH/NCI
Clifford A. Smith, PhD, ABPP-Cn	VA

## Ground Rules



No rank in the  
room



Stay respectful and  
engaged



Participate



Refrain from  
political comments



Share your  
experiences



Learn from others

# Recap of Web Meeting #2

## Web Meeting #2 Review

- Discussed the Environmental Scan updates
- Reviewed preliminary findings and key themes from the Key Informant Interviews

# **Discussion: Environmental Scan Updates and Public Comments**

## Environmental Scan Updates

- Expanded discussion of modes of PROM administration and methods of data collection
- Additional explanation of gaps between PRO-PMs and other quality measures and domains
- A more comprehensive view of the implications of interoperability on PRO-PMs
- Additional links to web sites that are constantly updated with new information on digital quality measurement

## PLACEHOLDER: Overview of Public Comments

- Received # comments from \_ organizations
- Themes include:

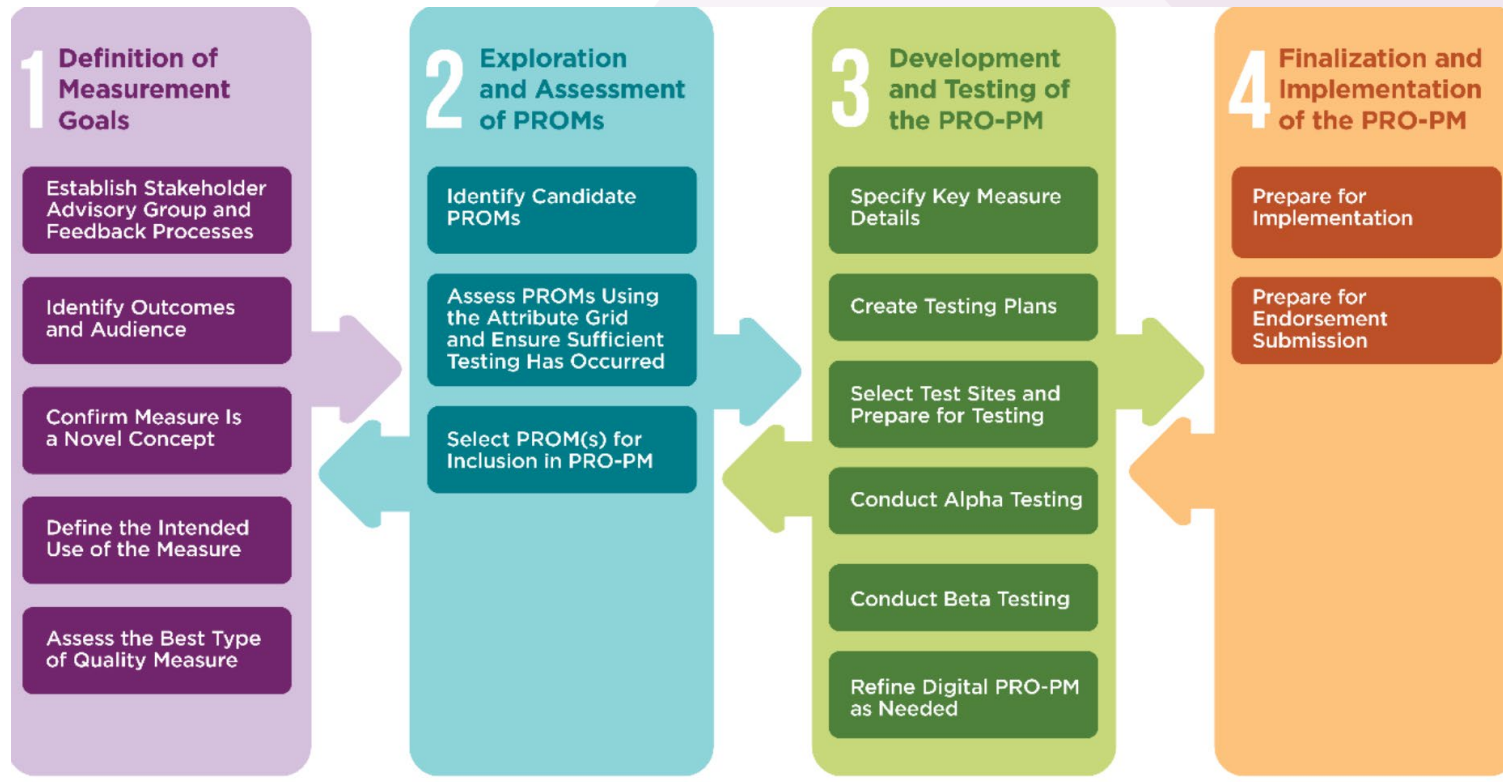
# Comments Received with Proposed TEP Response

- *[screenshare]*



# Findings from Key Informant Interviews (KIIs)

# Reminder of the Roadmap



*Figure 1. PRO-PM Roadmap: Each column contains one stage, and the bidirectional arrows indicate that tasks can move freely and be iterated across stages.*

## Findings from Key informant Interviews *(1 of 3)*

- Recommendations from five or more interviewees:
  - ▣ Strengthen the overall structure of the Roadmap
  - ▣ Provide improved guidance on digital measurement
  - ▣ Discuss issues related to burden and workflow that are unique to PRO-PMs
  - ▣ Explain tradeoffs in data collection strategies for a PRO-PM

## Findings from Key informant Interviews (2 of 3)

- Recommendations from two to four interviewees:
  - ▣ Describe opportunities to engage patients
  - ▣ Identify and address health equity issues
  - ▣ Address low response rates and response bias
  - ▣ Discuss the timing of PROM data collection

## Findings from Key informant Interviews (3 of 3)

- Notable recommendations raised by only one interviewee:
  - ▣ Establish new terminology to reframe PROMs as instruments, not measures
  - ▣ Address proxies
  - ▣ Rewrite language with unintended interpretation
  - ▣ Further differentiate between experience and outcomes
  - ▣ Promote the benefits of PRO-PMs

## Discussion: Roadmap Strengths

- Interviewees recommended **not changing** the following elements of the Roadmap
  - ▣ Strength 1: The report's articulation of the four stages and tasks to communicate the development process for a PRO-PM
  - ▣ Strength 2: The Roadmap's non-prescriptive approach to measure development, and its presentation of the steps of PRO-PM development in a flexible way
  - ▣ Strength 3: The focus on three PRO domains of HRQoL, functional status, and symptoms and symptom burden
- Discussion Questions
  - ▣ Do any TEP members disagree with these recommendations?
  - ▣ Are there other elements of the Roadmap that **should not** be changed?

## Discussion: New Task in the Roadmap

- “Resources and Related Reading” as a new Stage 1 task
- Purpose: Link to “source of truth” documents so the Roadmap:
  - ▣ Can avoid redundancy with other established resources
  - ▣ Will be more accessible to novice measure developers
  - ▣ Remains relevant as technology and standards evolve
- Discussion Questions (please reference the Discussion Guide included in the meeting materials)
  - ▣ Are there questions or concerns about this proposal?
  - ▣ What other resources should be included?
  - ▣ Given the number of HL7 Implementation Guides, should any specific guides be linked?

## Discussion: Updates to Existing Tasks

- The KIIs identified 13 improvement opportunities within the existing Roadmap tasks
- Discussion Questions for each recommendation (please reference the Discussion Guide included in the meeting materials)
  - ▣ Does the TEP agree with this suggestion?
  - ▣ What information does the TEP recommend adding to the Roadmap to address this suggestion?



# NQF Member and Public Comment

# Next Steps

## Upcoming Dates

- Developer Feedback Report will be posted and available for public comment May 20 through June 13
- Web Meeting #4: Tuesday, June 14th from 1pm – 2:30pm EST

## Project Contact Information



Email: [propmroadmap@qualityforum.org](mailto:propmroadmap@qualityforum.org)



NQF phone: (202)783-1300



Project page: [Building a Roadmap from Patient-Reported Outcome Measures to Patient-Reported Outcome Performance Measures](#)



SharePoint site: [PRO-PM Roadmap SharePoint Home Page](#)

**THANK YOU.**

**NATIONAL QUALITY FORUM**

<http://www.qualityforum.org>