



**NATIONAL
QUALITY FORUM**

Driving measurable health
improvements together

<https://www.qualityforum.org>

Primary Care and Chronic Illness, Fall 2021 Measure Review Cycle

Post-Comment Standing Committee Meeting

Paula Farrell, MSHQS, BSN, RN, CPHQ, Director

Oroma Igwe, MPH, Manager

Gabrielle Kyle-Lion, MPH, Analyst

Matilda Epstein, MPH, Associate

May 25, 2022

Funded by the Centers for Medicare & Medicaid Services under contract HHSM-500-2017-00060I Task Order HHSM-500-T0001

Welcome

Housekeeping Reminders

- This is a Webex meeting with audio and video capabilities
- Please mute your computer when not speaking
- The system will allow you to mute/unmute yourself and turn your video on/off throughout the event
- We encourage you to keep the video on throughout the event
- We encourage you to use the following features
 - ▣ Chat box: to message NQF staff or the group
 - ▣ Raise hand: to be called upon to speak
- We will conduct a Standing Committee roll call once the meeting begins

If you are experiencing technical issues, please contact the NQF project team at primarycare@qualityforum.org

Meeting Ground Rules

- Be prepared, having reviewed the meeting materials beforehand
- Respect all voices
- Remain engaged and actively participate
- Base your evaluation and recommendations on the measure evaluation criteria and guidance
- Keep your comments concise and focused
- Be respectful and allow others to contribute
- Share your experiences
- Learn from others

Agenda

- Review and Discuss Comments Received on Measures
- NQF Member and Public Comment
- Next Steps
- Adjourn

Project Team — PCCI Committee



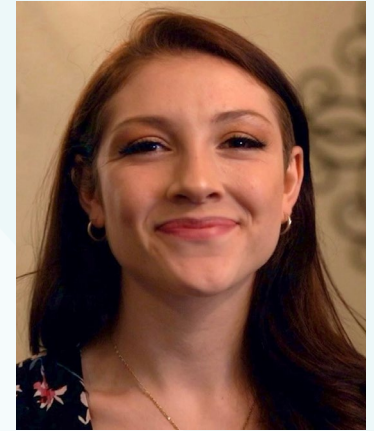
**Paula Farrell, MSHQS,
Director**



**Oroma Igwe, MPH,
Manager**



**Gabrielle Kyle-Lion, MPH,
Analyst**



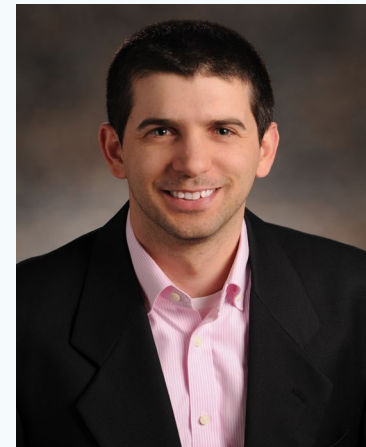
**Matilda Epstein, MPH,
Associate**



**Erica Brown, MHA, PMP,
Project Manager**



**Poonam Bal, MHSA,
Senior Director**



**Peter Amico, PhD,
Consultant**

Primary Care and Chronic Illness (PCCI) Fall 2021 Cycle Standing Committee

■ PCCI Standing Committee

- Dale Bratzler DO, MPH (Co-chair)
- Adam Thompson, BA (Co-chair)
- Esther Babady, PhD, D (ABMM)
- Lindsay Botsford, MD, MBA, FAAFP
- William Curry, MD, MS
- Kim Elliott, PhD
- David Lang, MD
- Katherine Gray, PhD
- William Curry, MD
- William Glomb, MD, FCCP, FAAP
- Anna McCollister

■ Behavioral Health Standing Committee

- Harold Pincus, MD
- Jeffery Susman, MD
- Vitka Eisen, Ed.D
- Raquel Mazon Jeffers, MPH
- Brooke Parish, MD

■ Cancer Standing Committee

- Karen Fields, MD
- Shelly Fuld Nasso, MPP
- Jette Hogenmiller, PhD, MN, APRN/ARNP, CDE, NTP, TNCC, CEE
- Jennifer Malin, MD, PhD
- Heidi Floyd

Fall 2021 Cycle Measures

- **Three measures were reviewed**

- ▣ **Measures Recommended for Endorsement**

- » #3661 Mismatch Repair (MMR) or Microsatellite Instability (MSI) Biomarker Testing Status in Colorectal Carcinoma, Endometrial, Gastroesophageal, or Small Bowel Carcinoma (*College of American Pathologists*)
 - » #3332 Percentage of children from 3.00 to 17.99 years of age seen for a pediatric well child visit who have a Pediatric Symptom Checklist (PSC) Tool administered as a component of that visit. (*Massachusetts General Hospital*)

- ▣ **Measures Not Recommended for Endorsement**

- » #3667 Days at Home for Patients with Complex, Chronic Conditions (Centers for Medicare & Medicaid Services/Yale Center for Outcomes Research & Evaluation)

Review and Discuss Comments on the Draft Report

Screenshare Memo

NQF Member and Public Comment

Next Steps

Activities and Timeline – Fall 2021 Cycle

***All times ET**

Meeting	Date, Time*
CSAC Review	July 26, 10AM- 5PM ET
Appeals Period (30 days)	August 1 – August 30

- Staff will incorporate comments and responses to comments into meeting materials for the Consensus Standards Approval Committee (CSAC) meeting
- CSAC meets to endorse measures
- Opportunity for public to appeal endorsement decision



Project Contact Info

- Email: primarycare@qualityforum.org
- NQF phone: 202-783-1300
- Project
page: https://www.qualityforum.org/Primary_Care_and_Chronic_Illness.aspx
- SharePoint
site: <https://share.qualityforum.org/portfolio/PrimaryCareChronicIllness/SitePages/Home.aspx>

THANK YOU.

NATIONAL QUALITY FORUM

<https://www.qualityforum.org>