



NATIONAL
QUALITY FORUM

Renal Project: Spring 2018 Measure Review Cycle

Standing Committee Meeting

June 18, 2018, 3-5pm ET

June 19, 2018, 3-5pm ET

Andrew Lyzenga, MPP

Poonam Bal, MHSA

NQF Staff

- Project staff
 - *Andrew Lyzenga, Senior Director*
 - *Poonam Bal, Senior Project Manager*
- NQF Quality Measurement leadership staff
 - *Elisa Munthali, Senior Vice President*
- General Counsel
 - *Amol Batra*

Introductions and Disclosures of Interest

Renal Standing Committee

- Constance Anderson, BSN, MBA (Co-Chair)
- Lorien Dalrymple, MD, MPH (Co-Chair)
- Ishir Bhan, MD, MPH
- Rajesh Davda, MD, MBA, CPE
- Elizabeth Evans, DNP
- Michael Fischer, MD, MSPH
- Renee Garrick, MD, FACP
- Stuart Greenstein, MD
- Mike Guffy
- Debra Hain, PhD, APRN, ANP-BC, GNP-BC, FAANP
- Lori Hartwell
- Frederick Kaskel, MD, PhD
- Myra Kleinpeter, MD, MPH
- Alan Kliger, MD
- Mahesh Krishnan, MD, MPH, MBA, FASN
- Lisa Latts, MD, MSPH, MBA, FACP
- Karilynne Lenning, MHA, LBSW
- Franklin Maddux, MD, FACP
- Andrew Narva, MD, FACP, FASN
- Jessie Pavlinac, MS, RD, CSR, LD
- Mark Rutkowski, MD
- Michael Somers, MD
- Bobbi Wager, MSN, RN
- John Wagner, MD, MBA
- Joshua Zaritsky, MD, PhD

Overview of Evaluation Process

Roles of the Standing Committee

During the Evaluation Meeting

- Act as a proxy for the NQF multistakeholder membership
- Work with NQF staff to achieve the goals of the project
- Evaluate each measure against each criterion
 - *Indicate the extent to which each criterion is met and rationale for the rating*
- Make recommendations regarding endorsement to the NQF membership

Ground Rules for Today's Meeting

During the discussions, Committee members should:

- Be prepared, having reviewed the measures beforehand
- Base evaluation and recommendations on the measure evaluation criteria and guidance
- Remain engaged in the discussion without distractions
- Attend the meeting at all times (except at breaks)
- Keep comments concise and focused
- Avoid dominating a discussion and allow others to contribute
- Indicate agreement without repeating what has already been said

Questions?

Consideration of Candidate Measures

3402 Standardized First Kidney Transplant Waitlist Ratio for Incident Dialysis Patients (SWR)

- Description: This measure tracks the number of incident patients at the dialysis facility under the age of 75 listed on the kidney or kidney-pancreas transplant waitlist or who received living donor transplants within the first year of initiating dialysis.

3403 Percentage of Prevalent Patients Waitlisted (PPPW)

- Description: This measure tracks the percentage of patients at each dialysis facility who were on the kidney or kidney-pancreas transplant waitlist. Results are averaged across patients prevalent on the last day of each month during the reporting year.

NQF Prioritization Initiative

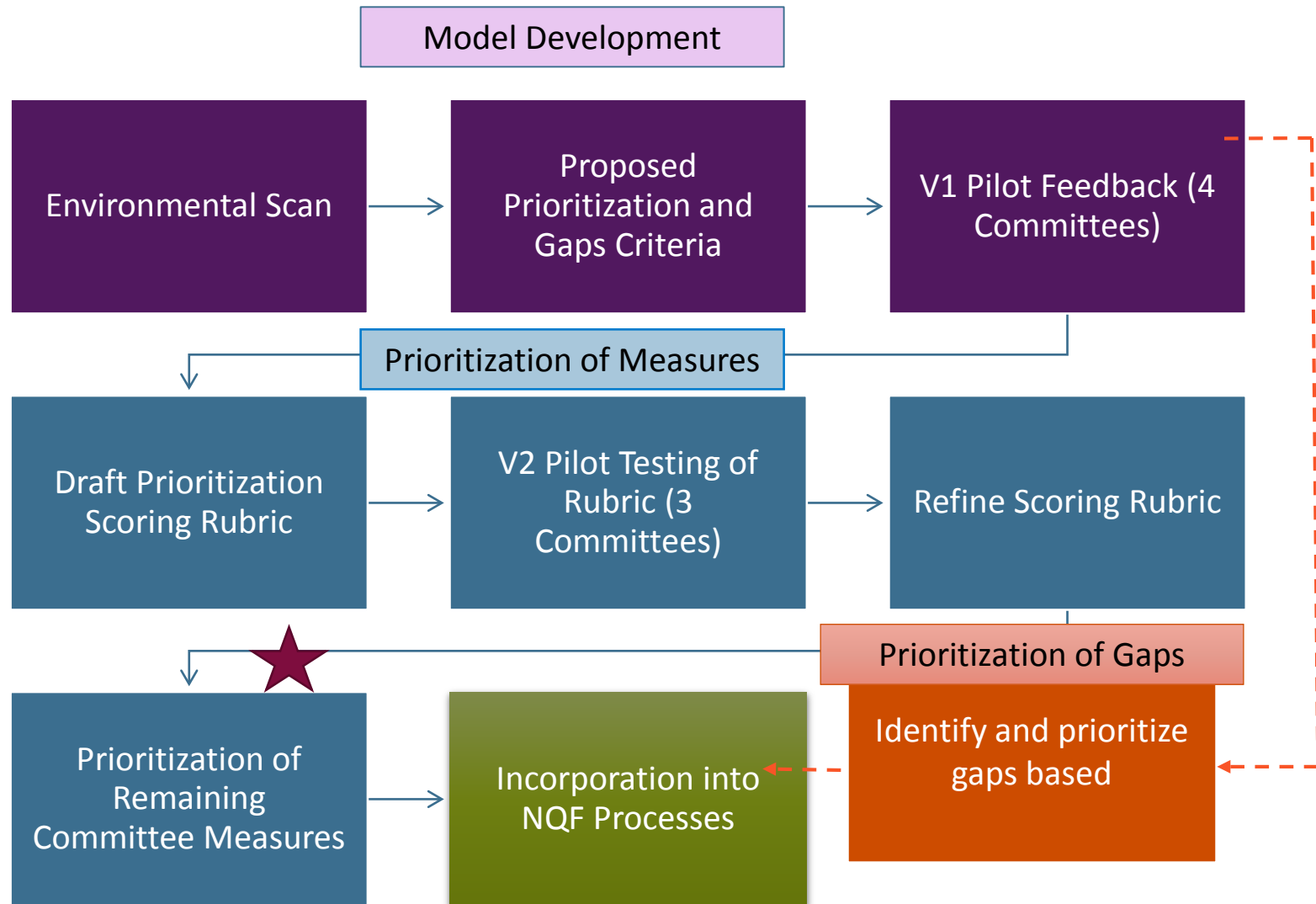
NQF's Strategic Direction



Learn more about NQF's Strategic Plan at

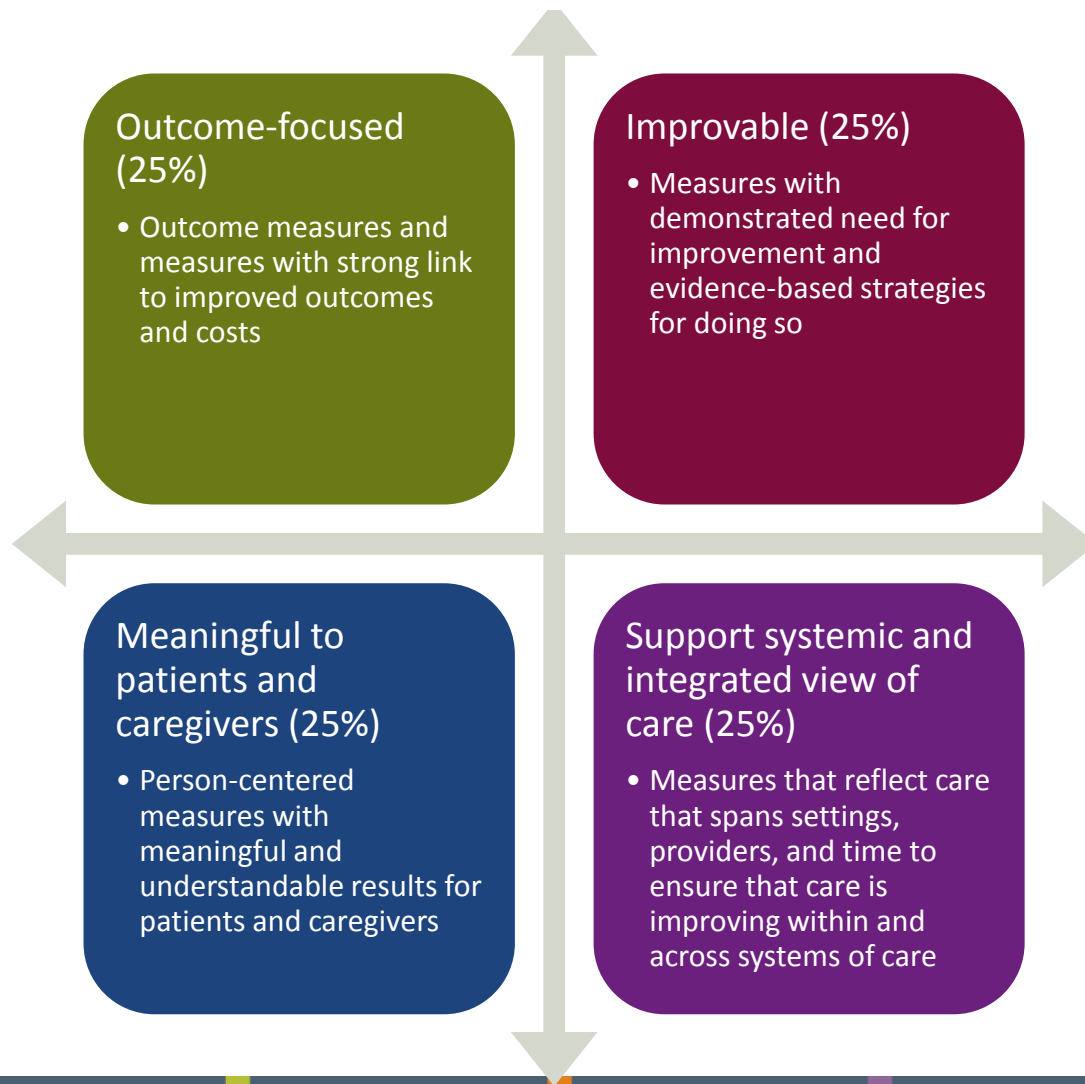
http://www.qualityforum.org/NQF_Strategic_Direction_2016-2019.aspx

NQF Prioritization Initiative



NQF Measure Prioritization Criteria

Prioritization Phase 1



Prioritization Phase 2



Breakdown of the Criteria

Outcome-focused

- Measures are scored based on measure type: Process/Structural, Intermediate clinical outcome or process tightly linked to outcome, Outcome/CRU

Improvable

- Measures are scored based the percentage of committee members votes on the “Gap” Criteria during measure evaluation and maintenance review for “High,” “Moderate,” or “Low.”

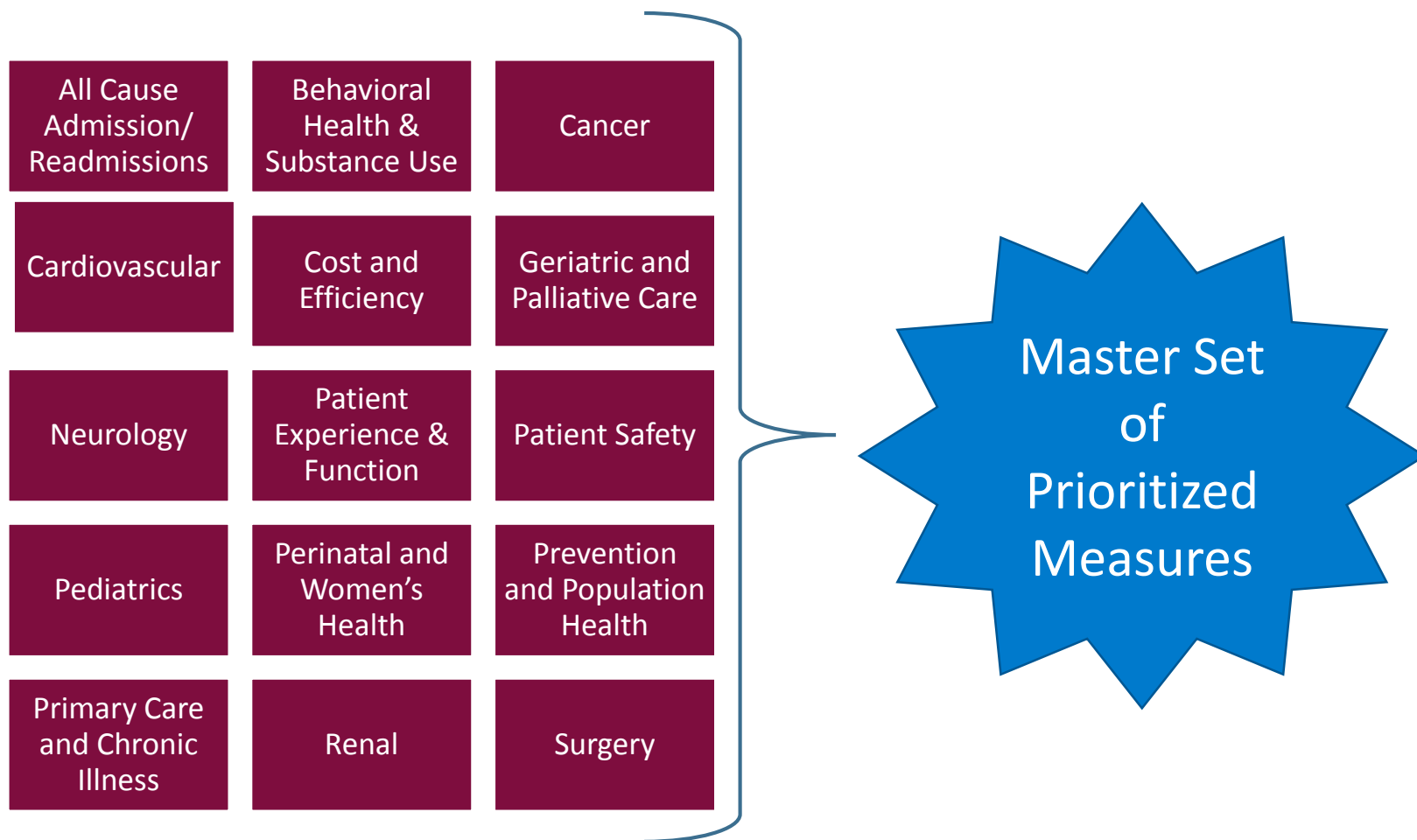
Meaningful to patients and caregivers

- Measures are scored based on if they are (1) a PRO and (2) if they are tagged as meaningful to patients.
- A meaningful change or health maintenance to the patients and caregivers encompasses measures that address the following areas: Symptoms, Functional status, Health related quality of life or well-being. Patient and caregiver experience of care (Including Financial Stress, Satisfaction, Care coordination/continuity of care Wait times, Patient and caregiver autonomy/empowerment) and Harm to the patient, patient safety, or avoidance of an adverse event

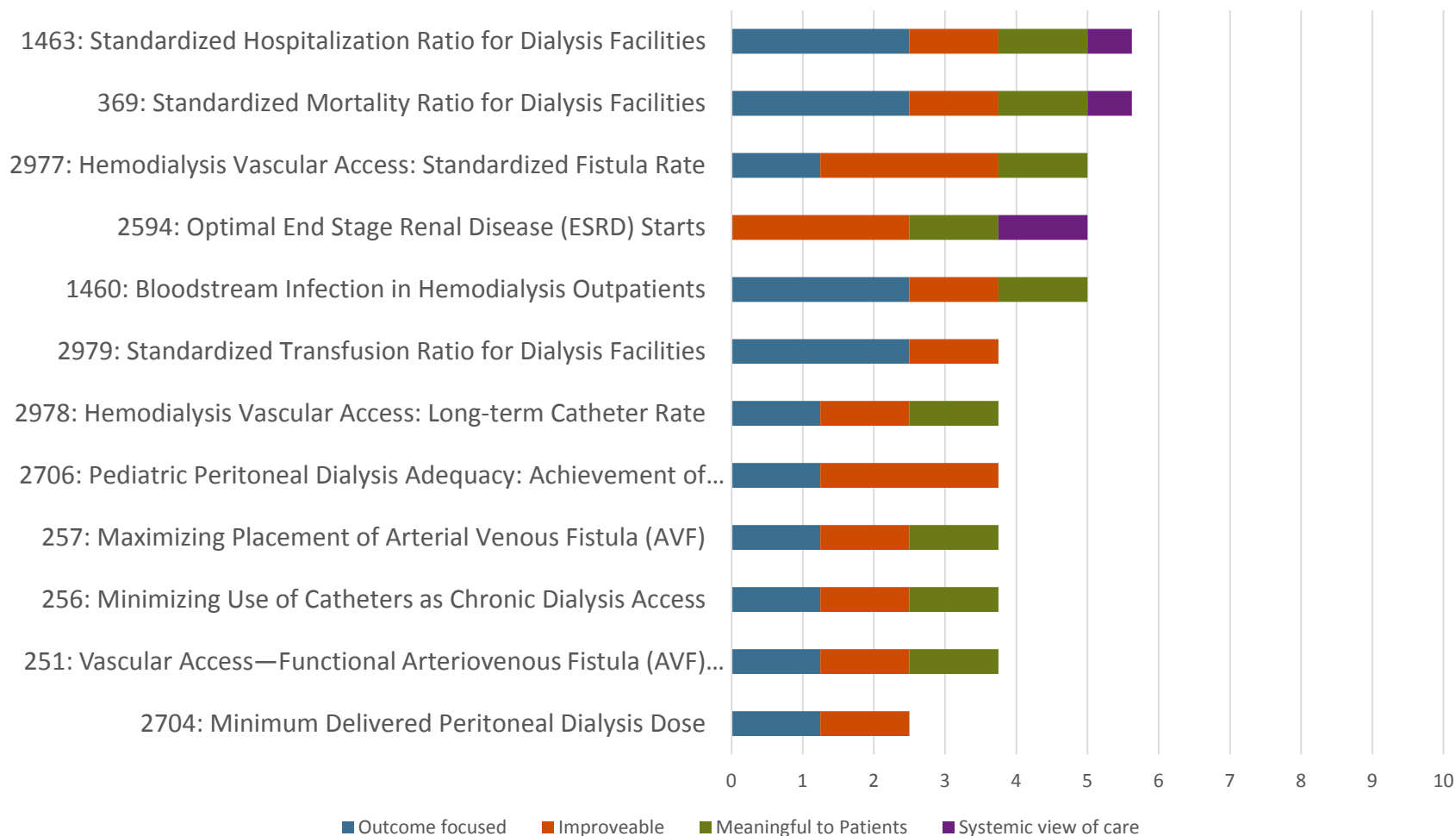
Support systemic and integrated view of care

- Measures are scored based on if (1) if they are a composite measure, (2) if they are applicable to multiple settings, (3) if they are condition agnostic, and (4) if they reflect a system outcome.
- A system outcome is defined as a measure that: Addresses issues of Readmission, Addresses issues of Care-coordination, Results from the care of multiple providers, or Addresses aspects to enhance healthcare value (including a cost or efficiency component)

Prioritization will be conducted within and across portfolios

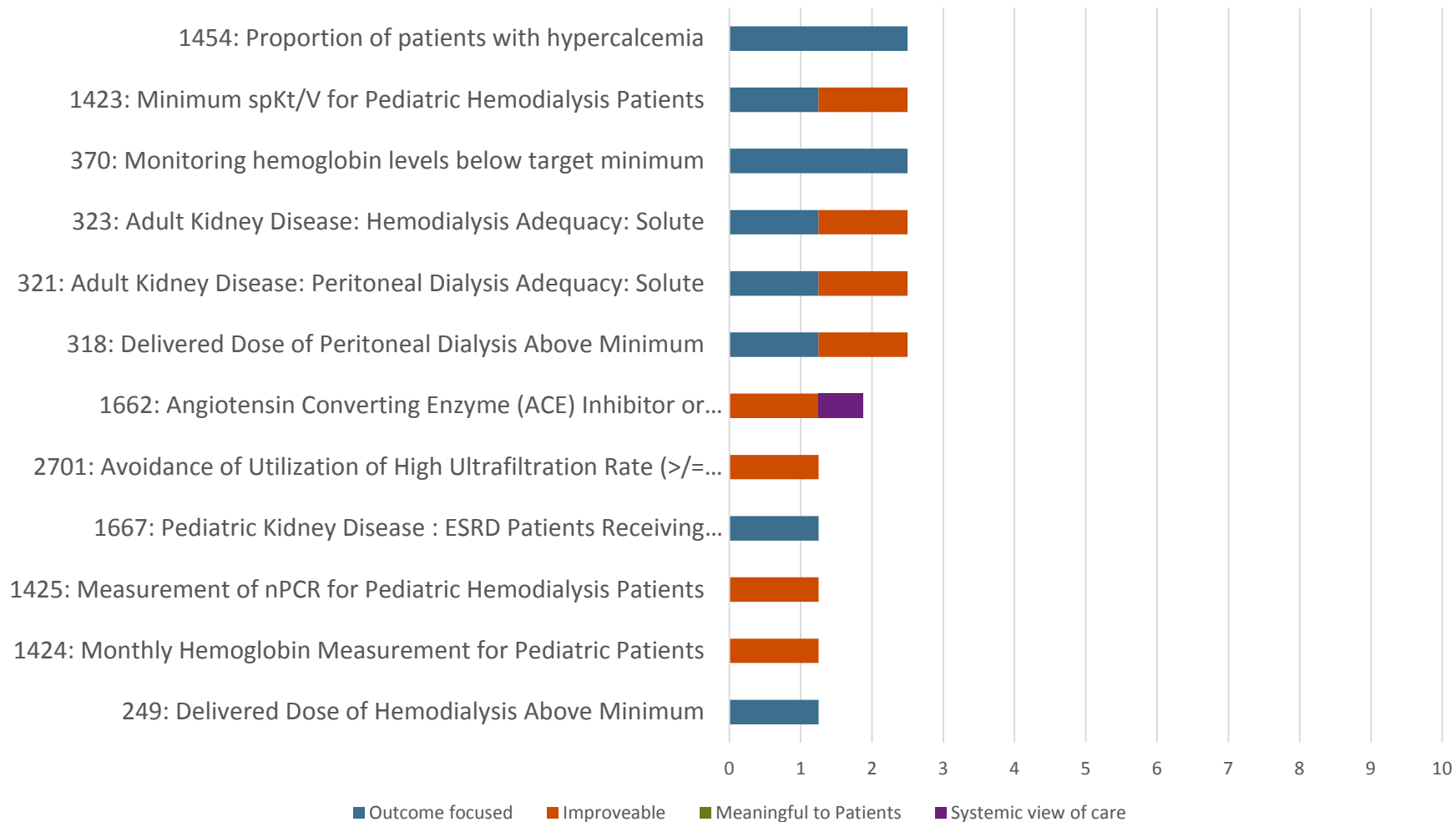


Renal Portfolio Prioritization Scoring: Page One



Renal Portfolio Prioritization Scoring

Page Two



NQF Prioritization Initiative: What's Next?

Activity	Date
Roll out at Spring 2018 Standing Committee Meetings	May-June 2018
Compile Phase I results from across Committees	June-August 2018
Measure Evaluation Annual Report Appendix	September 2018
Presentation/Update at NQF Annual Meeting	March 2019

Questions for Committee

- Do the initial scoring results yield the outcomes you might have expected?
 - ▣ *Are the highest and lowest impact measures scoring correctly based on the rubric?*
 - ▣ *Do you have any feedback on the way the rubric is generating results or suggestions for updates in future iterations?*
- Survey to be sent by email following the presentation.

NQF Member and Public Comment

Activities and Timeline

Process Step	Timeline
Post-Meeting Call	Jun 27, 2018, 1:00-3:00 pm ET
Draft Report posted for Public and NQF Member Comment	July 24-August 22, 2018
SC Call to review and respond to Comments	September 7, 2018 12:00-2:00 pm ET
CSAC Review and Approval	October 2018
Appeals	Oct. 30 – Nov. 28, 2018
Final Report Posted	January 16, 2019

Project Contact Info

- Email: renal@qualityforum.org
- NQF Phone: 202-783-1300
- Project page:
http://www.qualityforum.org/Project_Pages/Renal.aspx
- SharePoint site:
<http://share.qualityforum.org/Projects/Renal/SitePages/Home.aspx>

Adjourn