


Measure Applications Partnership

Affordability Task Force

Web Meeting

November 14, 2013



NATIONAL QUALITY FORUM

Meeting Objectives

- Review task force charge, role within the MAP, and plan to complete the task
- Provide an overview of NQF's current work on affordability
- Develop consensus-based definitions of affordability

Measure Applications Partnership
CONVENED BY THE NATIONAL QUALITY FORUM

2

Agenda

- Welcome, Disclosures of Interest, and Review of Meeting Objectives
- NQF’s Affordability Work and MAP’s Affordability Family of Measures
- Defining Affordability through Multiple Stakeholder Lenses
- Opportunity for Public Comment
- Next Steps

Measure Applications Partnership
CONVENED BY THE NATIONAL QUALITY FORUM

3

Affordability Task Force Membership

Task Force Chair: Mark McClellan, MD, PhD

Organizational Members

AdvaMed	Steven Brotman, MD, JD
Alliance of Dedicated Cancer Centers	Ronald Walters, MD, MBA, MHA, MS
America’s Health Insurance Plans	Aparna Higgins, MA
American College of Radiology	David Seidenwurm, MD
American Federation of State, County, and Municipal Employees	Sally Tyler, MPA
American Hospital Association	Richard Umbdenstock, FACHE
American Medical Association	Carl Sirio, MD
American Society of Consultant Pharmacists	Jennifer Thomas, PharmD
Association of American Medical Colleges	Joanne Conroy, MD
Blue Cross Blue Shield of Massachusetts	Wei Ying, MD, MS, MBA
Kindred Healthcare	Sean Muldoon, MD, MPH, FCCP
Mothers Against Medical Error	Helen Haskell, MA
Pacific Business Group on Health	David Hopkins, PhD
Pharmaceutical Research and Manufacturers of America	Christopher Dezii, RN, MBA, CPHQ
Service Employees International Union	Charissa Raynor
Visiting Nurses Association of America	Margaret Terry, PhD, RN

Measure Applications Partnership
CONVENED BY THE NATIONAL QUALITY FORUM

4

Affordability Task Force Membership

Subject Matter Experts

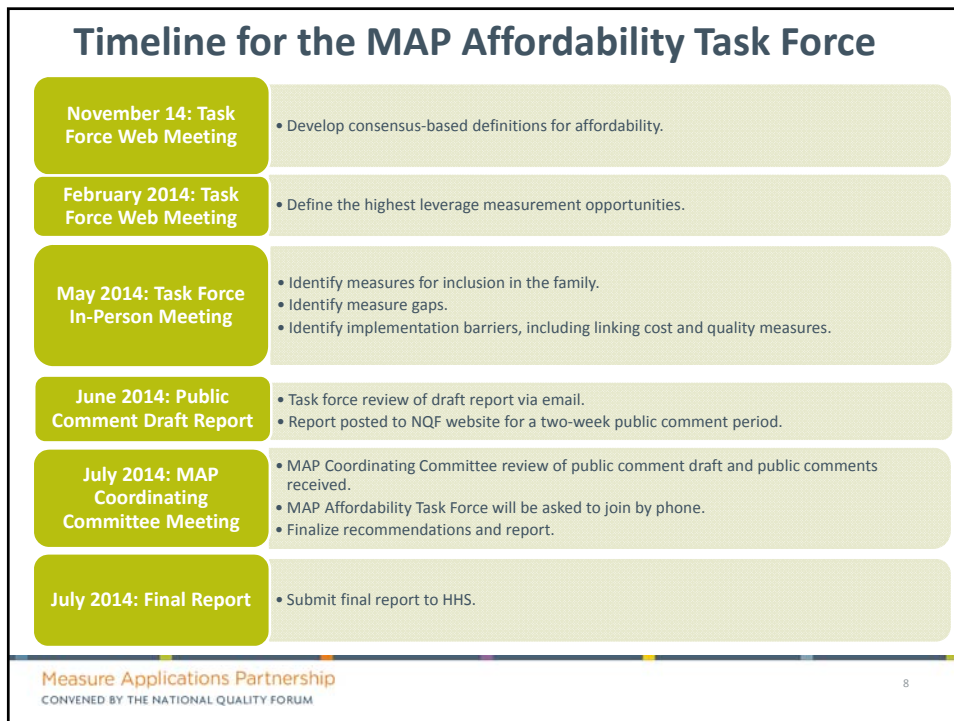
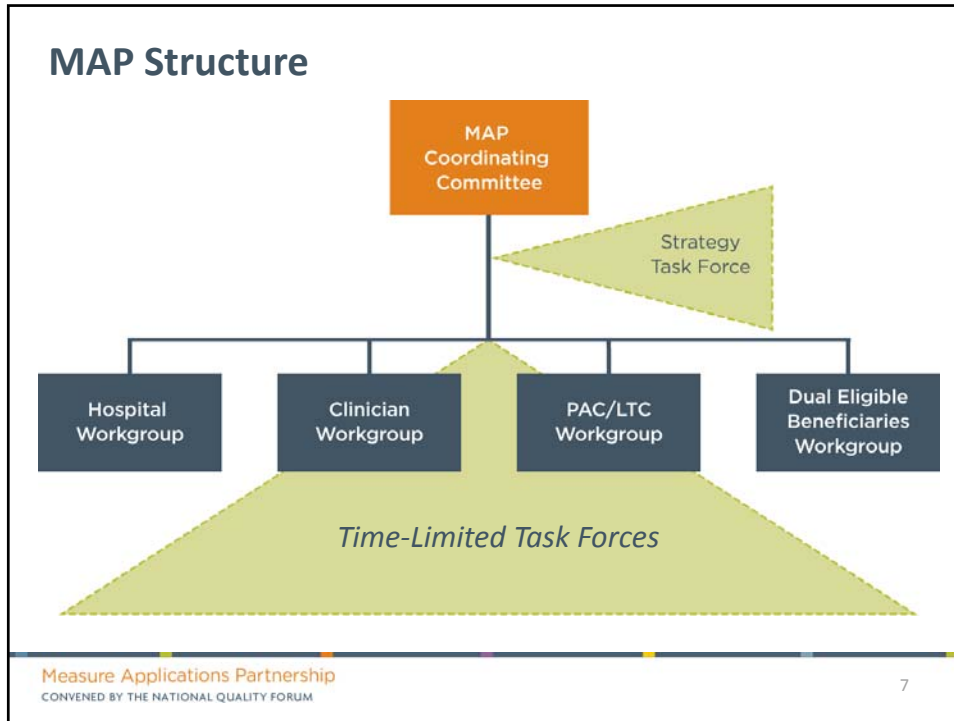
Care Coordination	Gerri Lamb, PhD
Emergency Medical Services	James Dunford, MD
Measure Methodologist	Dolores Yanagihara, MPH
Palliative Care	Sean Morrison, MD
Population Health	Eugene Nelson, MPH, DSc
State Policy	Dolores Mitchell, MSHA, RN, CCM, FACHE

Federal Government Members

Centers for Medicare & Medicaid Services (CMS)	Kate Goodrich, MD
Office of the National Coordinator for HIT (ONC)	Representative to be determined

MAP Affordability Task Force Charge

- Advise the MAP Coordinating Committee on an Affordability Family of Measures, including:
 - Recommendations for measures to include in the family
 - Identification of gaps and recommendations for filling gaps
 - Analysis of barriers to using the measures within the affordability family
- The task force is time-limited and consists of current MAP members from the MAP Coordinating Committee and all MAP workgroups with relevant interests and expertise



NQF's Affordability Work and MAP's Affordability Family of Measures

NQF's Affordability Work

Key Questions:

1. How do various stakeholders define affordability and what do they consider most important to measure?
 - Affordability Family of Measures (MAP)
 - Efficiency Measurement: The Missing Link Between Cost and Quality (RWJF)
2. What measures are available to assess affordability and could be readily implemented in accountability programs?
 - Cost and Resource Use Measures (endorsement project)
 - Episode Grouper Measure Evaluation Criteria (endorsement project)
 - Affordability Family of Measures (MAP)
3. What are the key methodological challenges to developing and using measures of affordability?
 - Efficiency Measurement: The Missing Link Between Cost and Quality (RWJF)
 - Affordability Family of Measures (MAP)

NQF's Affordability Work

Currently 5 projects underway that relate to affordability:

- **MAP Affordability Family**
 - Develop consensus-based definitions of affordability
 - Identify high-leverage opportunities for improvement and measurement
 - Create a family of available measures and gaps
- **Episode Grouper Evaluation Criteria**
 - Define the characteristics of an episode grouper versus other measurement systems, including classification or risk adjustment systems
 - Review the best practices for constructing an episode grouper
 - Identify the key elements for evaluating an episode grouper
 - Determine the criteria for evaluating an episode grouper

NQF's Affordability Work

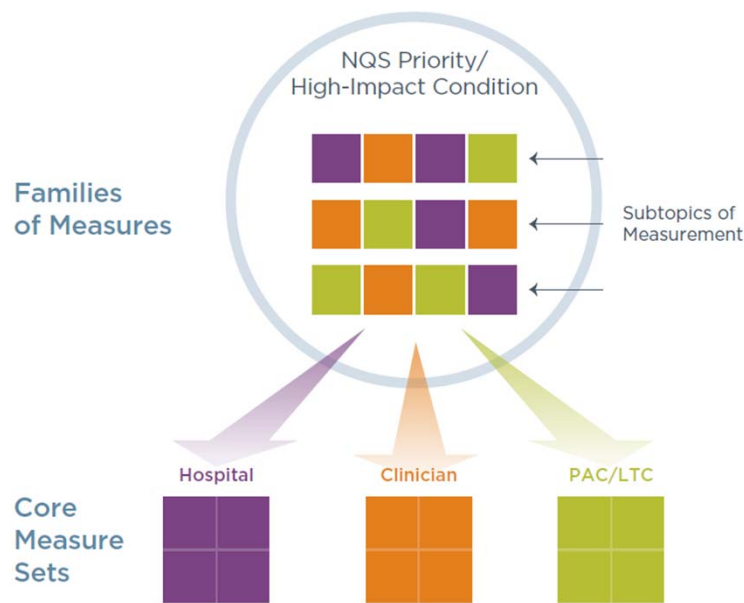
- **Cost and Resource Use Measure Endorsement**
 - Focus on cost and resource use for cardiovascular and pulmonary conditions
- **RWJF Linking Cost and Quality Measures**
 - Deliberate on current approaches to measuring and understanding efficiency and identifying possible trade-offs
 - Recommend methodological approaches to combining cost and quality and technical issues related to individual cost measures
- **RWJF Measuring Affordable Care**
 - Review what types of cost measures are most important to consumers
 - Discuss the types of data needed for these measures
 - Deliberate on how patient-reported data can best be leveraged
 - Identify the factors that influence a consumer's perception of whether care is affordable
 - Recommend ways this information can be reported to address consumer needs for discerning affordable and efficient providers

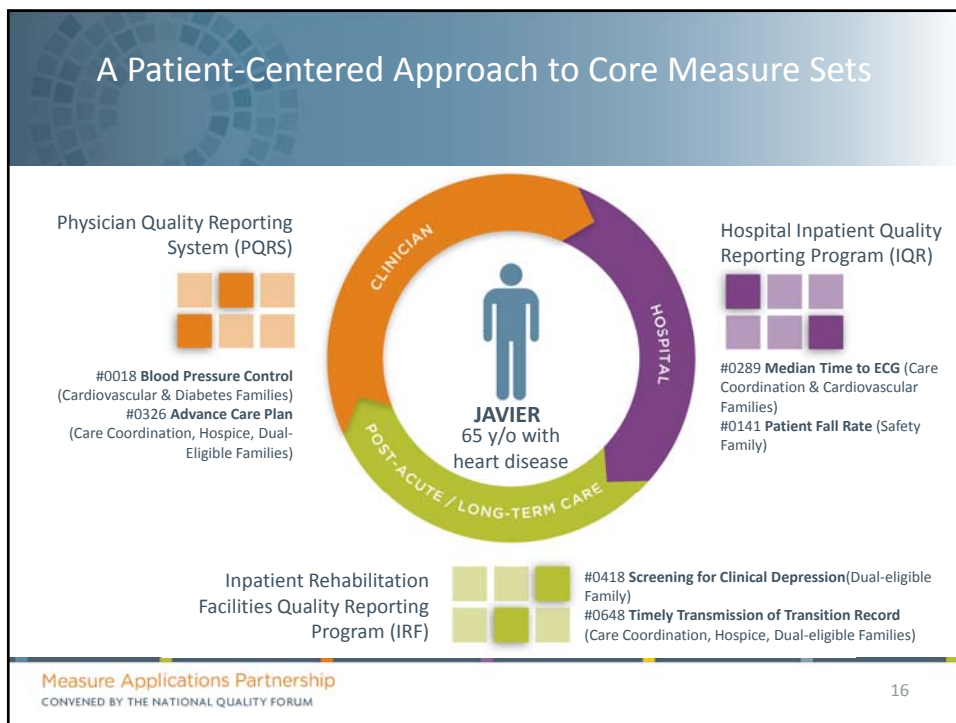
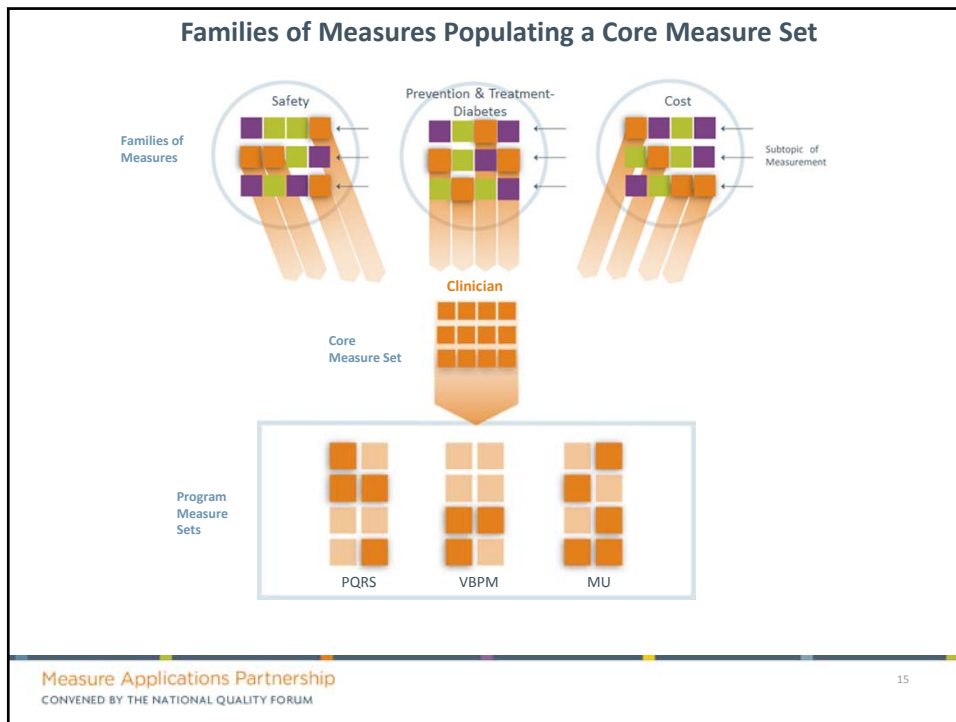
MAP Families of Measures

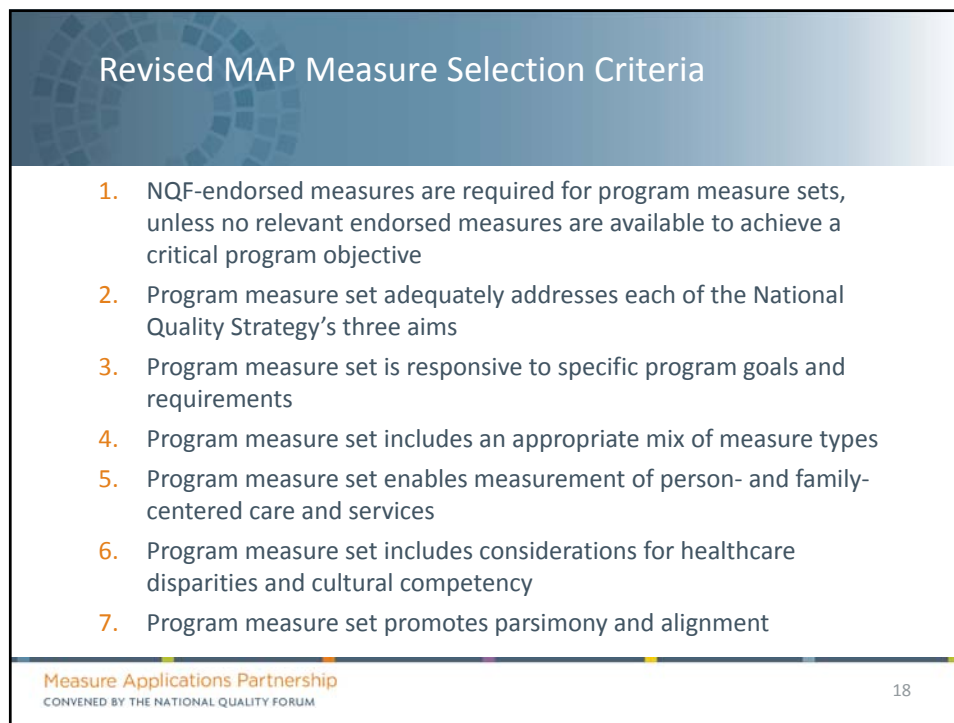
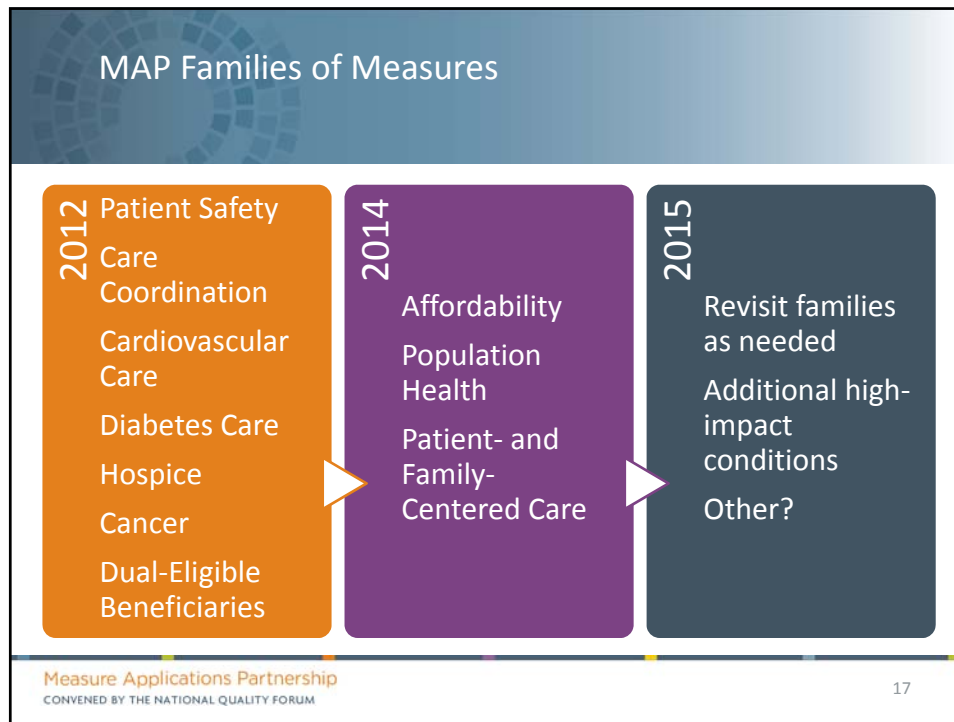
Families of Measures and Core Measure Sets to Align Performance Measurement Across Federal Programs and Public and Private Payers

Family of measures – “related available measures and measure gaps for specific topic areas that span programs, care settings, levels of analysis, and populations” (e.g., care coordination family of measures, diabetes care family of measures)

Core measure set – “available measures and gaps drawn from families of measures that should be applied to specified programs, care settings, levels of analysis, and populations” (e.g., PQRS core measure set, hospital core measure set, dual eligible beneficiaries core measure set)







Approach to Developing an Affordability Family of Measures

1. Develop consensus-based definitions of affordability

- Define the parameters of affordability taking into account multiple stakeholders perspectives
- Conduct stakeholder outreach to understand the range of definitions and perspectives

Approach to Developing an Affordability Family of Measures

2. Identify and Prioritize High-Leverage Opportunities for Measurement

- Identify high-leverage opportunities for improvement and measurement
 - Major cost drivers across settings and populations(e.g. vulnerable populations, commercially insured, Medicaid, Medicare)
 - National Quality Strategy
 - IOM's Healthcare Imperative: Lowering Costs and Improving Outcomes report
 - Public-sector efforts
 - Private-sector efforts
- Prioritize high-leverage opportunities for measurement
 - Impact, improvability, inclusiveness
 - Areas of waste, inefficiency, overuse
- Consider how high-leverage opportunities span the patient-focused episode of care
 - Do the high-leverage opportunities span settings, levels of analysis?
 - How should measures addressing the high-leverage opportunities vary across settings?

Approach to Developing an Affordability Family of Measures

3. Scan of Available and Pipeline Measures that Address the High-Leverage Opportunities

- NQF-endorsed portfolio of measures.
- Measures in federal programs.
- Available private sector information.

Approach to Developing an Affordability Family of Measures

4. Define the Affordability Family of Measures and Measure Gaps

- Considerations for defining the family
 - Do available measures address the relevant care settings, populations, levels of analysis?
 - When appropriate, are measures harmonized across settings, populations, levels of analysis?
 - What are the types of measures available for each setting, population, level of analysis?
- Identify implementation barriers and how to overcome them

Approach to Developing an Affordability Family of Measures

5. Consider the application of principles developed through the RWJF work in the context of federal and private programs

- MAP will provide input on the principles developed by the expert panel convened through the RWJF project
- These principles will explore:
 - Linking cost and quality
 - Attribution
 - Risk adjustment
 - Exclusions
 - Reliability/small numbers
 - Patient perspectives on affordability

Efficiency Measurement: The Missing Link Between Cost and Quality

Key Objectives

- Provide guidance on methodological challenges in linking cost measures and quality measures
- Provide guidance more narrowly on individual cost of care measures
- Lay out a path toward patient-oriented cost measures

Efficiency Measurement: The Missing Link Between Cost and Quality

Approach

- Commission two white papers:
 - Technical issues related to linking cost and quality; and
 - Patient perspective on affordability.
- Convene two expert panels:
 - Develop principles for the future development, testing, and reporting of measures to evaluate efficiency.
 - Outline a strategy for the development of patient-oriented cost measures.
- Conduct environmental scans of approaches to linking cost and quality and available measures that could be used to assess costs that matter most to patients.
- Synthesize results into principles for application of cost measures.

Defining Affordability through Multiple Stakeholder Lenses

See background document “Defining Affordability”. The synthesis of public comments received will be distributed next week.