



NATIONAL
QUALITY FORUM

Measure Developer Webinar

Jean-Luc Tilly
John Bernot
Kyle Cobb
Wunmi Isijola

January 23, 2017

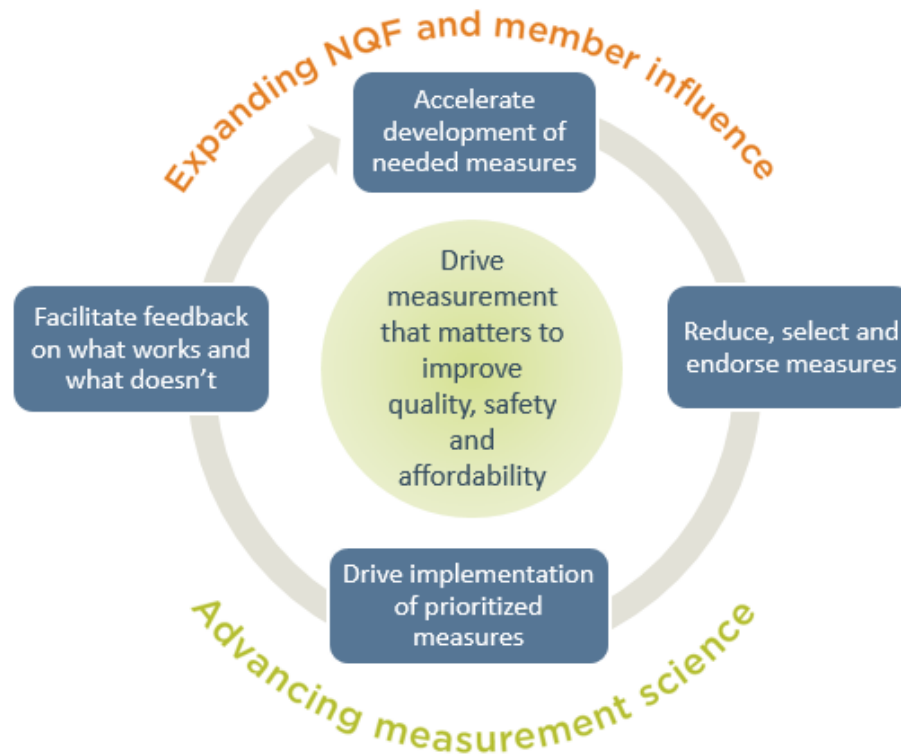
Agenda

- Classifying NQF Measures: Taxonomy Updates
- Examples of Measure Classification
 - *Data Source*
 - *Type*
 - *Target Population*

Classifying NQF Measures

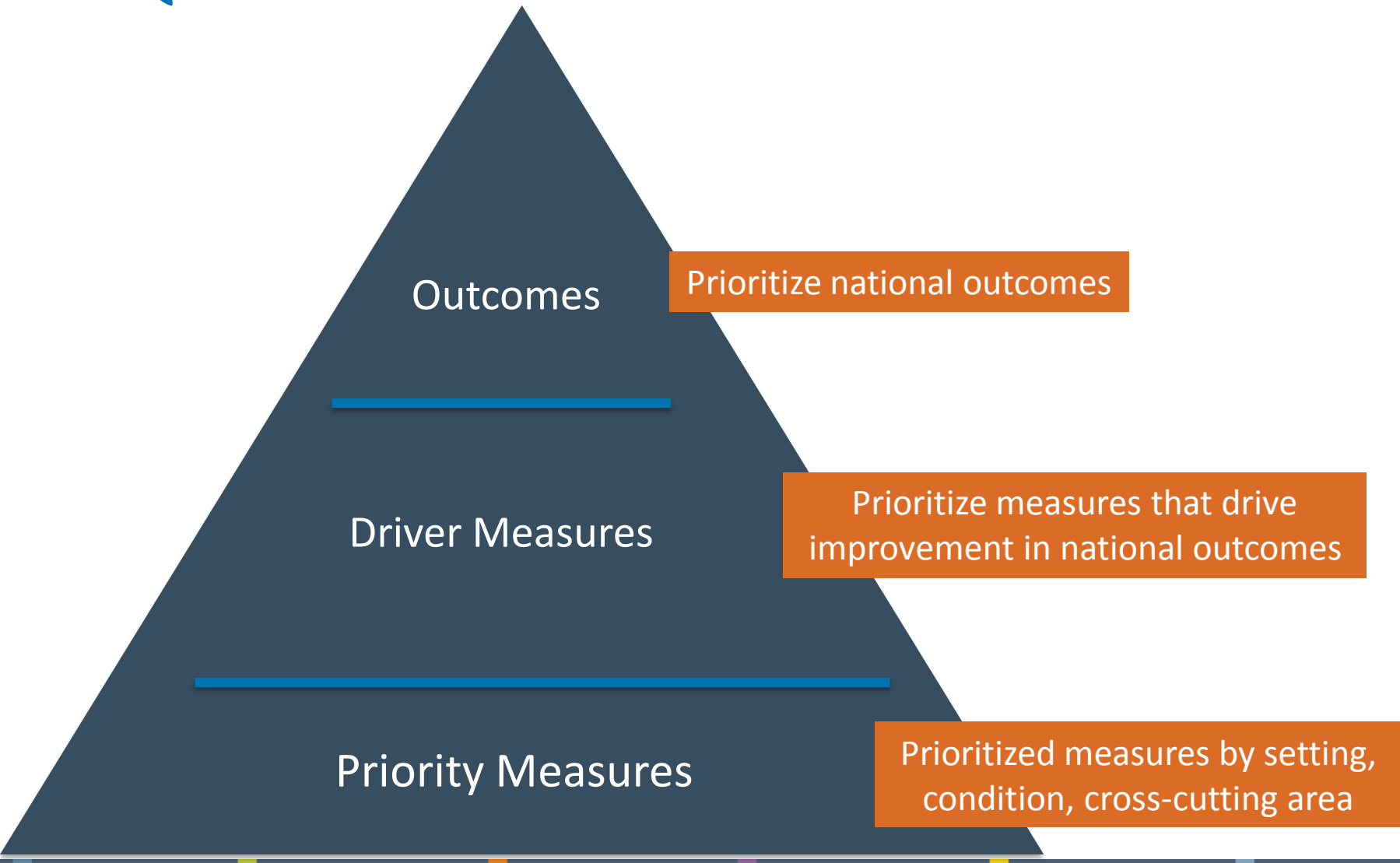
NQF: Our Mission & Strategic Plan

The National Quality Forum's (NQF) mission is to lead national collaboration to improve health and healthcare quality through measurement.



NQF is diversifying its role to be more proactive. In addition to our core measurement work we will also **lead**, **prioritize** and **collaborate** to drive measurable improvements in healthcare.

Using Measure Information – NQF Measure Prioritization



Taxonomy

- In support of NQF Strategic Plan to support the advancement of measurement
 - *Accurately describe existing measure landscape*
 - *Balanced breadth and depth to provide framework for gap areas, saturated areas and areas of low value.*
- To be updated on an annual basis based on
 - *Review of use of existing terms, identifying under or incorrectly-used terms for revision*
 - *Review new measure submissions for innovative concepts with no clear taxonomy domain(s)*
 - *Use an environmental scan to identify new aspects of measurement science that may not yet be reflected in measure submissions to NQF, but are forthcoming*

Assigning Measure Characteristics at Endorsement

As part of measure submission, NQF measures are classified in the following areas:

- Developers choose:
 - *Type*
 - *Care Setting*
 - *Data Source*
 - *Level of Analysis*
 - *Target Population*
- NQF Staff choose:
 - *Clinical Condition/Topic Area*
 - *Non-Condition Specific*
 - *National Quality Strategy (NQS) Priority*

Using Measure Information – Quality Positioning System (QPS)

NATIONAL QUALITY FORUM

Measure Search

☐ Search as Phrase

Measures Portfolios Compare ☐☐☐ Add to Compare Add to Portfolio Export ?

Narrow Your Search

Measure Type:

- ☐ Process: Appropriate Use
- ☐ Composite
- ☐ Cost/Resource Use
- ☐ Efficiency
- ☐ Outcome
- ☐ Outcome: PRO
- ☐ Process
- ☐ Structure
- ☐ Intermediate Clinical Outcome

☒ Endorsement Status

Examples of Measure Classification

2016 Update to NQF Taxonomy

- New options added to:
 - ▣ *Target population (e.g. adolescents)*
 - ▣ *Data Source (e.g. Claims-only, Management data)*
 - ▣ *Care Setting (e.g. Emergency department, Birthing center)*
 - ▣ *Type (e.g. Process: Appropriate Use)*
- NQF Staff will assign measure classifications in:
 - ▣ *Non-Condition Specific (new classifications added in MSF v. 7.0 – was ‘Cross-Cutting Area’)*
 - ▣ *Subject/Topic Area (new conditions added in MSF v. 7.0)*

Measure Type

■ Options:

- Outcome
- Outcome: PRO
- Intermediate Clinical Outcome
- Process
- Process: Appropriate Use (NEW)
- Cost/Resource Use
- Composite
- Efficiency
- Structure

■ Coding Example:

- **NQF#:** 0069
- **Title:** Appropriate Treatment for Children With Upper Respiratory Infection (URI)
- **Description:** Percentage of children 3 months to 18 years of age with a diagnosis of upper respiratory

infection (URI) who were not dispensed an antibiotic medication.

- **Code:**
 - » Process: Appropriate Use

Data Source

■ Options:

- *Claims (Only)* (NEW)
 - *Claims (Other)*
 - *EHR Hybrid*
 - *Electronic Health Record (Only)*
 - *Imaging-Diagnostic*
 - *Laboratory*
 - *Management Data* (NEW)
 - *Non-Medical Data* (NEW)
 - *Paper Records*
 - *Patient-Reported Data*
 - *Pharmacy*
 - *Provider Tool*
 - *Registry*
 - *Other*
-

■ Coding Example:

- **NQF#:** 1392
- **Description:** *The percentage of children 15 months old who had the recommended number of well-child visits with a PCP during their first 15 months of life.*
- **Data Source Instrument:** *This measure is based on administrative claims and medical record documentation collected in the course of providing care to health plan members.*
- **Data Source Code:**
 - » *Claims (Other)*
 - » *EHR Hybrid*
 - » *Paper Records*

Target Population

■ Options:

- Children
- Adolescents *(NEW)*
- Adults *(NEW)*
- Elderly
- Populations at Risk: Populations at Risk
- Populations at Risk: Dual-Eligible
- Populations at Risk: Multiple Chronic Conditions
- Populations at Risk: Veterans *(NEW)*
- Women

■ Coding Example:

- **NQF#:** 2943
- **Denominator:** *Percentage of patients aged 18 years and older with a diagnosis of diabetic retinopathy*

▫ **Code:**

- » Adults
- » Populations at Risk: Multiple Chronic Conditions

Technical Assistance

- NQF Staff are available to review and discuss measure coding selections: contact measuremaintenance@qualityforum.org
- NQF will update taxonomy in Q3

Next Steps/Announcements

- Next scheduled NQF Measure Developer webinar will be Monday, February 20, from 1:00-2:00 PM EST.
 - ▣ Measure Use/Feedback Loops
- Measure Applications Partnership:
In-Person Meetings
Coordinating Committee- January 24-25