



**NATIONAL  
QUALITY FORUM**

Driving measurable health  
improvements together

<http://www.qualityforum.org>

# Measure Developer Webinar

The NQF Measure Maintenance Team

*February 22, 2021*

*Funded by the Centers for Medicare & Medicaid Services under contract HHSM-500-2017-00060I Task Order HHSM-500-T0001 OY3.*

# Welcome

## Agenda

- Consensus Standards Approval Committee (CSAC) Process
  - ▣ Returning measures to the Standing Committee for reconsideration
- Identifying Complex Measures for Scientific Methods Panel (SMP) Review
- Scientific Acceptability Completeness Checks
- Consensus Development Process (CDP) Project Updates

## Measure Maintenance Team

- Sai Ma, PhD, NQF Managing Director/Senior Technical Expert
- Kathryn Goodwin, MS, NQF Director
- Hannah Bui, MPH, NQF Manager
- Bejier Edwards, PMP, NQF Project Manager
- Caitlin Flouton, MS, NQF Senior Analyst

# CSAC Process



## CSAC Decision to Send Measures Back to Standing Committee for Reconsideration

- The CSAC may send a recommended measure back to a Standing Committee for reconsideration if there are concerns with any of the rationale/criteria below:
  - ▣ Strategic importance of the measure
  - ▣ Cross-cutting issues concerning measure properties
  - ▣ Consensus development process concerns
- Measures undergoing maintenance review will retain endorsement as they are sent back to the Standing Committee for reconsideration

## Returning Measures to the Standing Committee for Reconsideration

1. After a thorough discussion, the CSAC votes to send a measure back to a Standing Committee for reconsideration due to concerns with any or all the decision-making criteria.
2. CSAC chairs will summarize the rationale for this decision and the issues to be addressed.
3. NQF staff inform measure developers and NQF CDP team(s) of the decision and next steps.
4. The measure is reviewed again by the Standing Committee in the next cycle, focusing on items identified by the CSAC.
5. The Standing Committee will discuss and re-vote on the specified criteria and the overall suitability for endorsement.
6. The measure continues through the remaining CDP steps as usual.



## Standing Committee Reconsideration Discussion and Vote

- Specific criteria where CSAC identified an issue:
  - ▣ NQF Staff (and/or lead discussant) provide summary of CSAC evaluation and overarching issues.
  - ▣ Committee must re-discuss criteria with noted issue and re-vote.
  - ▣ Discussion and re-vote on remaining criteria are not needed.
- Issues outside of criteria application:
  - ▣ If the CSAC does not take issue with a particular criterion, but rather a non-criterial item such as overall fit for the portfolio or an unadjudicated general public comment, the Standing Committee co-chairs, along with NQF staff, will determine the appropriate point to reopen measure discussion.
  - ▣ If Standing Committee co-chairs determine that the CSAC evaluation is general, then co-chairs may elect to begin the discussion and re-vote at overall endorsement.
  - ▣ If Standing Committee co-chairs determine that the CSAC evaluation is specific to a particular evaluation criterion, discussion and re-vote will begin at that criterion.
- Vote on overall suitability for endorsement is required in all cases.



# Identifying Complex Measures for SMP Review

## Complex vs. Noncomplex Measures

- The Scientific Methods Panel (SMP) reviews measures with reliability and validity testing, analyses, and results that are deemed **complex**

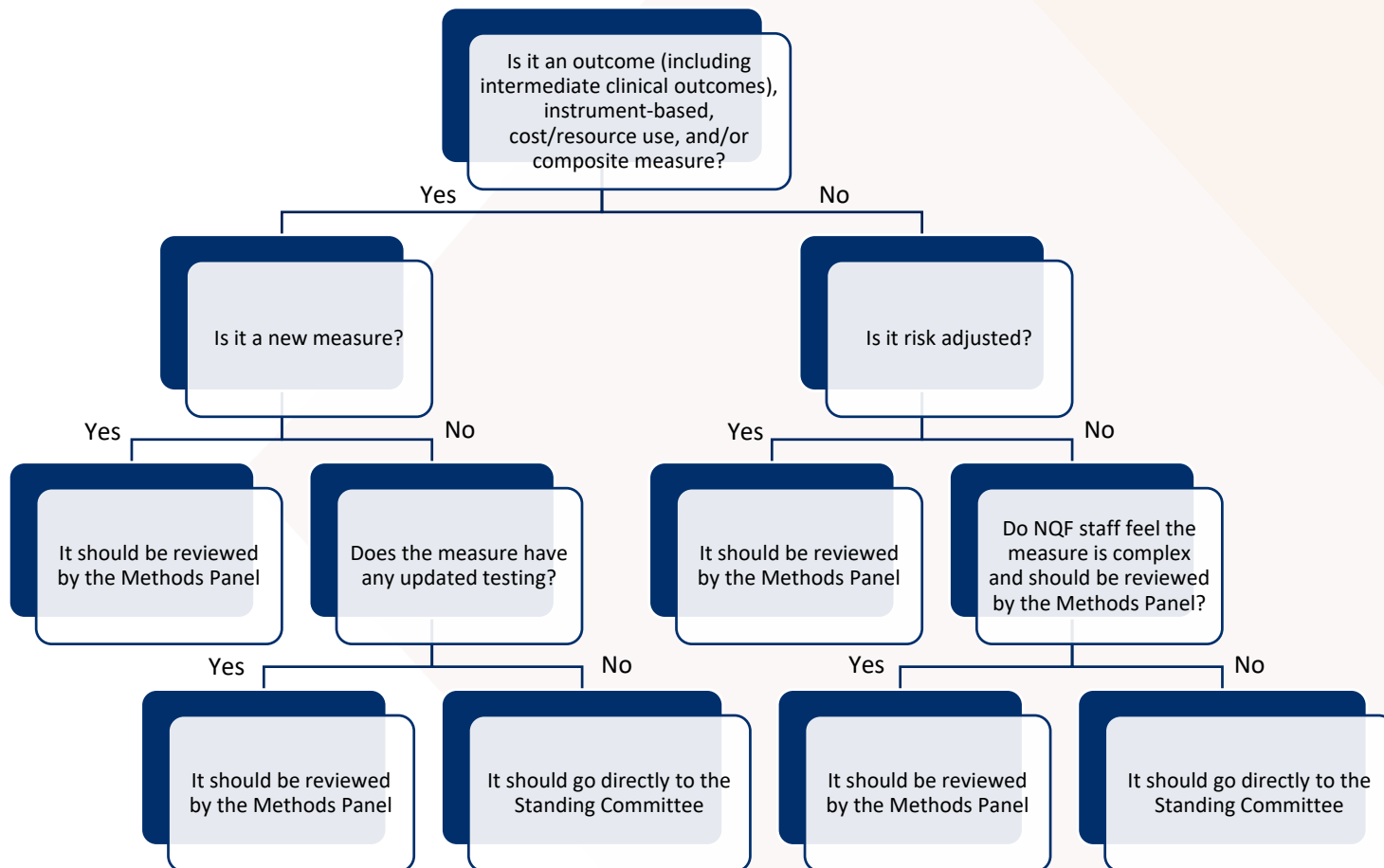
### *Complex Measures*

- Outcome measures, including intermediate clinical outcomes
- Instrument-based measures (e.g., PRO-PMs)
- Cost/resource use measures
- Efficiency measures (those combining concepts of resource use and quality)
- Composite measures
- Process measures with risk adjustment

### *Noncomplex Measures*

- Process measures
- Structural measures
- Previously endorsed complex measures with no changes/updates to the specifications or testing

## Decision Tree for Parsing Measures



# Scientific Acceptability Completeness Checks



## General Considerations

- ✓ ICD coding uses ICD-10 data
- ✓ Care setting(s) selected matches what is tested
- ✓ Level of testing matches what is required for the measure type
- ✓ Testing information provided for each level of analysis selected
- ✓ Testing information matches measure specifications
- ✓ Conceptual rationale provided for social risk factors and their relationship with the outcome
- ✓ Exclusions are addressed
- ✓ Missing data are addressed

## Additional Considerations

- ✓ **For data element testing**, methodology is clearly described including what data elements are tested. All critical data elements are included in testing. At a minimum, the numerator, denominator, and exclusions are assessed. Something more than percent agreement statistics is provided.
- ✓ **For score level testing**, the methodology is clearly described, and all results are interpreted.
- ✓ **For face validity**, if submitted at the time of maintenance review, rationale is provided as to why empirical testing was not performed.
- ✓ **For risk adjustment**, methodology, specifications, and statistics are clearly described.
- ✓ **For composite measures**, the included components are clearly described and their relationship to the overall composite is provided. A rationale is provided as to why each component is included and how they contribute to the overall composite score.
- ✓ **For eCQMs**, data comes from more than one EHR system. If any normalized EHR clinical data is used for testing, a description is provided to explain what fields were normalized and how, including how this may impact the measure.

## Testing Requirements by Measure Type

### *Composite, Cost/Resource Use*

Measure Type	Reliability Testing Requirement	Validity Testing Requirement
Composite	Score level testing of the composite measure score	Score level testing of the composite score is desired; Empirical or face validity testing of components, or face validity of the composite is acceptable at initial endorsement only
Cost/Resource use	<u>Either</u> data element or score level testing	<u>Either</u> data element or score level testing; Face validity not accepted for maintenance measures unless justification provided; Validity is considered in the context of measure intent and threats to validity based on these components: <ul style="list-style-type: none"> <li>• Attribution approach</li> <li>• Cost categories</li> <li>• Approach to outliers</li> <li>• Impact of Carve Outs</li> </ul>

## Testing Requirements by Measure Type

### *eCQM, Instrument-Based, Other*

Measure Type	Reliability Testing Requirement	Validity Testing Requirement
eCQM	Tested using the Health Quality Measure Format (HQMF); Elements not included in structured data fields should be tested at the data element level	Tested using the Health Quality Measure Format (HQMF); Elements not included in structured data fields should be tested at the data element level; Empirical testing is expected, and data element validation is required unless justification provided
Instrument-based (including PRO-PM)	<u>Both</u> data element and score level testing	<u>Both</u> data element and score level testing
All others (process; appropriate use; structure; efficiency; outcome; intermediate clinical outcome)	<u>Either</u> data element or score level testing	<u>Either</u> data element or score level testing; Face validity not accepted for maintenance measures unless justification provided



# CDP Updates

## Fall 2020 Updates and Next Steps

- Measure evaluation web meetings with the Standing Committees are underway
- After measure evaluation meetings, NQF staff will draft technical reports that summarize recommendations from each Standing Committee
- Reports are posted for a 30-day public and member commenting period
- Shortly after the close of the public and member commenting periods, the Standing Committees will reconvene for a post-comment web meeting
- After the post-comment web meeting, the CSAC will convene to make endorsement decisions on measures submitted to the Fall 2020 review cycle



## Spring 2021 Updates

- Intent to Submit was January 5
- Complex measures are being reviewed by the SMP
- Non-complex measures are being reviewed by staff

## Full Measure Submission Deadlines\*

Topic Area	Spring Cycle	Fall Cycle
Behavioral Health and Substance Use Neurology Patient Safety Renal	April 2	November 1
All-Cause Admissions and Readmissions Cardiovascular Patient Experience and Function Perinatal and Women's Health Primary Care and Chronic Illness	April 9	November 8
Cancer Cost and Efficiency Geriatric and Palliative Care Prevention and Population Health Surgery	April 16	November 15

*\*if the date takes place on a weekend, the deadline will occur on the next business day*

# Measure Developer Resources



## Submitting Standards Web Page

- Measure Evaluation Criteria and Guidance Document
  - ▣ Includes evaluation algorithms for evidence, reliability, and validity
    - » Lays out the logic that committees will use for rating Evidence, Reliability, and Validity subcriteria
- Measure Developer Guidebook
  - ▣ Explains the NQF process and expectations for developers
- What Good Looks Like: examples of good submissions
- Blank copies of submission forms



## Tips for Measure Developers

- General reminders:
  - ▣ Refer to the NQF Submitting Standards web page
  - ▣ Attend the bi-monthly measure developer webinars to ensure you are up to date with NQF timelines and process changes
  - ▣ Contact [measuremaintenance@qualityforum.org](mailto:measuremaintenance@qualityforum.org) for general inquiries or questions related to the Consensus Development Process (CDP), measure evaluation criteria, or technical assistance
  - ▣ Check your Dashboard regularly and verify the correct measure developer/steward contacts are listed. If this changes, please notify NQF immediately via the appropriate project mailbox. NQF uses the contacts listed in the Dashboard to send updates and reminders about deadlines related to your measure.
- Measure Submission:
  - ▣ Seek technical assistance from NQF staff early and often. Measure submission deadlines are firm and extensions will not be granted. If you would like NQF staff to provide input on your draft submission, please contact the appropriate NQF project team and request technical assistance well in advance of the deadline

## Upcoming Measure Developer Webinars

- Monday April 19 from 1:00 – 2:00 pm ET
- Monday May 17 from 1:00 – 2:00 pm ET
- Monday July 19 from 1:00 – 2:00 pm ET
- Monday August 16 from 1:00 – 2:00 pm ET
- Monday October 18 from 1:00 – 2:00 pm ET
- Monday December 20 from 1:00 – 2:00 pm ET





## Upcoming SMP Meetings

Meeting Type	Date and Time
Measure Evaluation Meeting (Spring 2021)	March 30-31 All day
Web Meeting	Tuesday May 4 from 12:00 – 2:00 pm ET
Web Meeting	Tuesday July 20 from 12:30 – 2:30pm ET
Measure Evaluation Meeting (Fall 2021)	October 26-27 All day
Web Meeting	Tuesday December 14 from 12:00 – 2:00 pm ET

**THANK YOU.**

**NATIONAL QUALITY FORUM**

<http://www.qualityforum.org>