



NATIONAL
QUALITY FORUM

Agenda

NQF Member Meetup: Launch Party for the New MAP

Monday, September 22, 2014

3:00 p.m. – 5:00 p.m. EDT

National Quality Forum 9th Floor Conference Room

1030 15th Street, NW - Washington, DC 20005

202.783.1300

3:00 pm

Welcome and Introductions

Dr. Christine Cassel, President and CEO

3:10 pm

Improvements to the Measures Application Partnership

Dr. Robert Saunders, Senior Director

3:25 pm

Introductions to the MAP Team

3:35 pm

Q&A Session

4:00 pm

Wine and Cheese Reception

(This event is for NQF Members Only)

NQF Member Meetup:
Launch Party for the New MAP



September 22, 2014

Welcome



Christine Cassel, MD
President and CEO, NQF

Presentation overview

- Origin of the Measure Applications Partnership
- Timeline and flow of its deliberations
- Specific improvements for this year
- Meeting the teams

Presentation overview

- **Origin of the Measure Applications Partnership**
- Timeline and flow of its deliberations
- Specific improvements for this year
- Meeting the teams

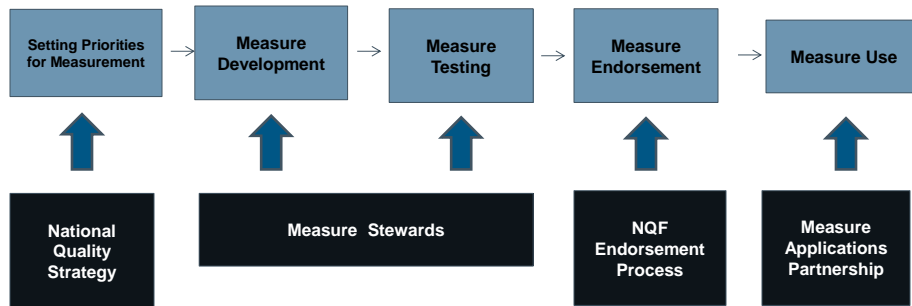
Measure Applications Partnership: Origin

- NQF created MAP in response to a provision of the Affordable Care Act (ACA) in 2010.
- It convenes stakeholders affected by or interested in measures for federal health programs.
- MAP provides input to HHS before the regulations for federal health programs are proposed.

What does MAP do?

- Provides input to HHS on measures considered for use in public reporting, performance-based payment, and other programs
- Identifies gaps for measure development, testing, and endorsement
- Encourages alignment of public and private sector programs

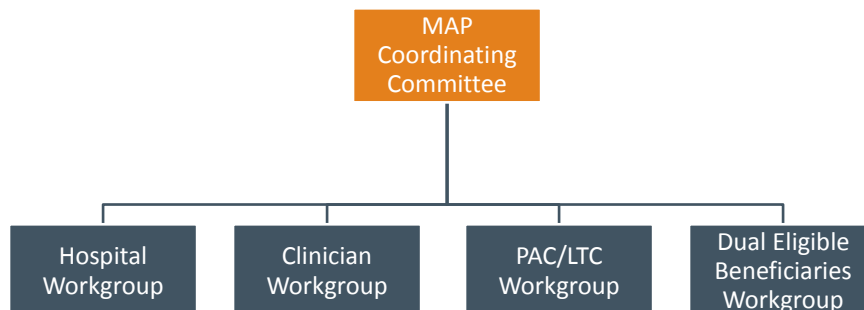
MAP's Place in the Measurement Spectrum



Measure Applications Partnership
CONVENED BY THE NATIONAL QUALITY FORUM

7

MAP Structure



NATIONAL QUALITY FORUM

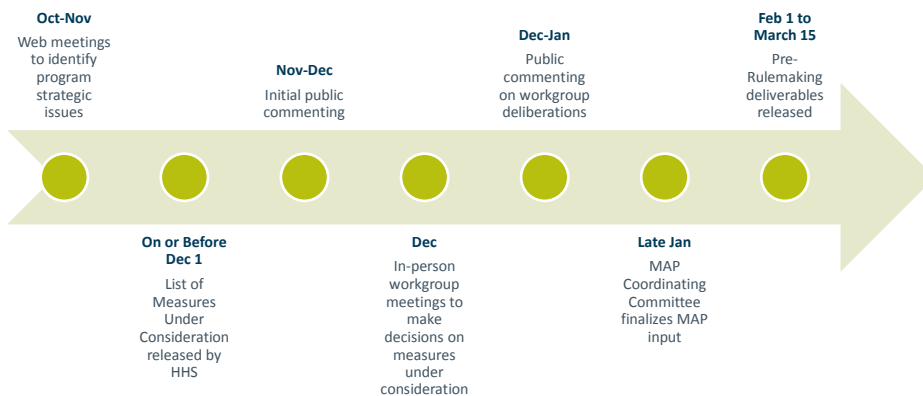
Presentation overview

- Origin of the Measure Applications Partnership
- **Timeline and flow of its deliberations**
- Specific improvements for this year
- Meeting the teams

NATIONAL QUALITY FORUM

9

Flow of activities for reviewing measures being considered for federal programs



NATIONAL QUALITY FORUM

10

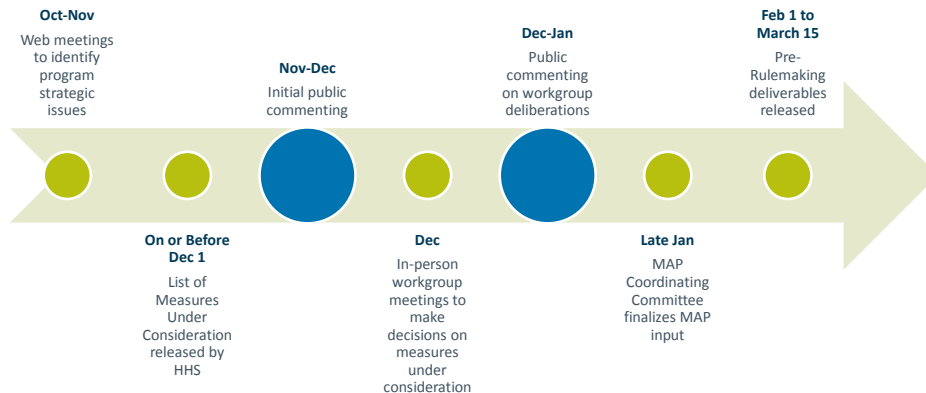
Presentation overview

- Origin of Measure Applications Partnership
- Timeline and flow of its deliberations
- **Specific improvements for this year**
- Meeting the teams

Background on MAP Process Improvement Efforts

- Based on feedback from MAP members, external stakeholders, NQF members, and staff, NQF undertook an intensive improvement effort on MAP.
- Our goal was to develop a streamlined and manageable process for MAP stakeholders and staff that results in an improved product.

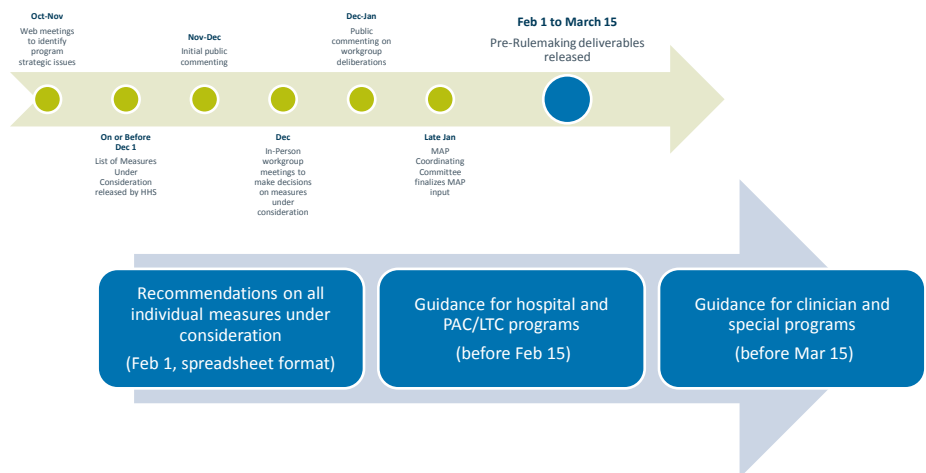
New for 2014-2015 Pre-Rulemaking: Expanded Opportunities To Gather Public Feedback



NATIONAL QUALITY FORUM

13

New for 2014-2015 Pre-Rulemaking: Focusing deliverables on individual measures and broader measurement guidance



NATIONAL QUALITY FORUM

14

New for 2014-2015 Pre-Rulemaking: More Consistent Deliberations and Voting Process

- MAP workgroups will decide on measures in a consistent and transparent process.
- Deliberations will be supported by a preliminary analysis that applies the MAP criteria and assists members in reviewing the large volume of measures.
- This will reserve MAP's discussion time for the most important issues.

Presentation overview

- Origin of the Measure Applications Partnership
- Timeline and flow of its deliberations
- Specific improvements for this year
- **Meeting the teams**

MAP Coordinating Committee Team



Robert
Saunders,
Senior Director

Allen Leavens,
Senior Director



Project Email:
MAPCoordinatingCommittee@qualityforum.org



Wunmi Isijola,
Project Manager



Amaru Sanchez,
Project Analyst

NATIONAL QUALITY FORUM

17

MAP Hospital Team

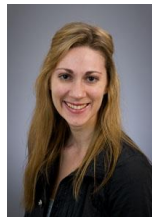


Taroan Amin,
Special
Assistant to
the President

Erin O'Rourke,
Senior Project
Manager



Project Email:
MAPHospital@qualityforum.org



Rachel Weissburg,
Project Manager



Poonam Bal,
Project
Analyst

NATIONAL QUALITY FORUM

18

MAP Clinician Team



Reva Winkler,
Senior
Director

Ashley Morsell,
Project Manager



Project Email:
MAPClinician@qualityforum.org



Lauralei Dorian,
Project Manager

Alexandra
Ogungbemi,
Project Analyst



MAP PAC/LTC Team

Project Email:
MAPPAC-LTC@qualityforum.org



Angela Franklin,
Senior Director



Mitra Ghazinour,
Project Manager



Laura Ibragimova,
Project Analyst

MAP Dual Eligible Beneficiaries Team

Project Email:
measureapplications@qualityforum.org



Sarah Lash,
Senior Director



Megan Duevel
Anderson, Project
Manager



Zehra Shahab,
Project Analyst

NATIONAL QUALITY FORUM

21

How can NQF members be involved?

- Participate in comment periods
 - On measures under consideration before workgroup meetings
 - On workgroup recommendations before Coordinating Committee meeting
- Nominate organization or subject matter expert representatives to serve on MAP
- Share feedback on the use of measures in the field

NATIONAL QUALITY FORUM

22